



PUBLISHED MONTHLY AND DISTRIBUTED FREE TO ALL CURRY RIVEL RESIDENTS; ALSO AVAILABLE IN VARIOUS OUTLETS AROUND CURRY RIVEL

## Breakfast Fit for a King!

*Hazel Morris*

**A**s part of the Coronation Celebrations, the Village Hall held a Big Breakfast on Sunday 7<sup>th</sup> May. The numbers haven't been crunched yet but based on the queue of people out of the door and the non-stop flow of breakfast orders coming into the kitchen, we anticipate some record-breaking numbers. It really was one of the busiest we've seen over the ten years (roughly) that this event has been running.

As usual, an event like this relies on volunteers and supporters and we would like to thank everyone involved both before the event and on the day. Once again, a massive thank you to Black Sheep Butcher for sponsoring our event by providing at least half of the sausages, bacon and eggs. Order takers and runners kept the orders flowing and the kitchen team worked non-stop from the time the doors opened right up to the time when they cried "no more orders, please!" at 12.30pm. Servers and clearers worked tirelessly to keep everybody served and a whole team of people kept the event running smoothly.

The hall was festooned with red, white and blue bunting courtesy of the WI and the tables were decorated with beautiful flower arrangements provided by Adrienne who also managed the tombola table. Both that and the raffle, managed by Jackie, were very popular, as always. Thank you to all who donated gifts and prizes.



We had thought it might be a busy event this Coronation weekend but hadn't anticipated quite how busy! So, we would like to apologise to any of you who had to wait longer than usual for your breakfast and to thank you for your patience.

This is a fantastic community event which also helps raise funds for the maintenance of the Village Hall. We are sure that this event will have raised another record-breaking figure and this will be reported next month.

PS - don't forget the 200 Club draw takes place in June so if you need to renew your tickets, would like to know more about the club and would like to join please contact Hazel on [hazelmorris200@gmail.com](mailto:hazelmorris200@gmail.com)



**So who was the lucky £50 winner?  
See page 4**

# Curry Rivel Parish Council budget 2023-24

Matt Geen

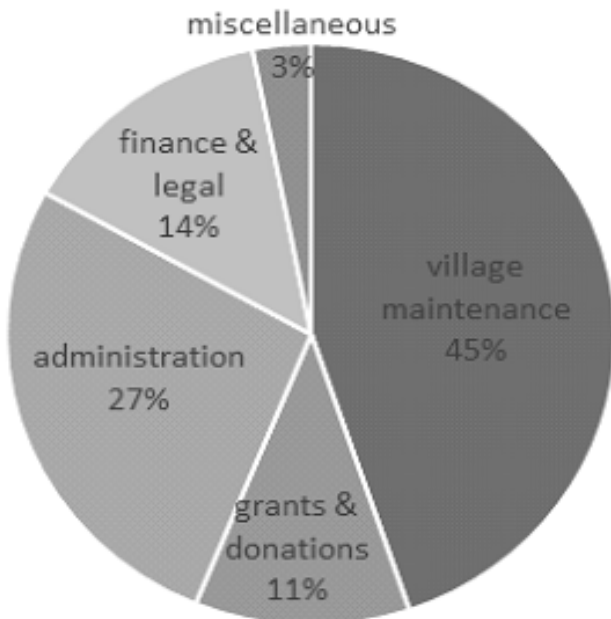
## Curry Rivel Parish Council has set its budget for the 2023-24 financial year.

This money will come from the taxpayers of the village, as part of their yearly Council Tax.

A Band D Council Tax payer will contribute £62.92, an increase of £5.86 (10.3%) from last year. That's £1.21 a week in total, and is under the rate of inflation, which was 13.5% over the same period. The whole budget for the Parish Council for the year is £61,500, which is an increase of 15% over the previous year. So how do we get an overall increase of 15% when council tax payers only contribute 10% more? It's simply because there are a few more council tax payers in the parish contributing to the pot this year.

The parish council's precept is a small part (3.8%) of your overall Council Tax, which also includes money for the new Somerset Council, and the police.

Here is how the budget divides up:



As you can see, the biggest part of that goes to keeping the village tidy and safe, including the Westfield play area. The Parish Council gives some of the money as grants and

donations to other organisations that improve the life of the village; Curry Rivel in Bloom and the food bank are examples. About a quarter of the money pays for the administration of the parish council. The Clerk does much, much more than publishing agendas and taking the minutes at council meetings. She is the person that keeps the whole parish ticking over smoothly, and is your interface to local government in general. In other words, she isn't just the Clerk for the Parish Council: she is *your* clerk! Any organisation needs to pay for things like insurance and bank charges. Those go into the "finance and legal" slice. That includes the cost of getting an external auditor to check that everything is done properly.

Other projects for improving the village are funded from money that housing developers are required to pay when they build in the parish to contribute to the infrastructure, and from local and national grants. We think that this money represents fair value for the hard-earned money of people in the parish. If you would like to know more or let us know what you think, please contact us via the Clerk by emailing [clerk@curryrivel.org.uk](mailto:clerk@curryrivel.org.uk) or come along to a Parish Council meeting, held monthly on the first Wednesday of most months in the Village Hall at 7:30 pm (check [www.curryrivel.org.uk/parish-council-1/agenda-and-minutes.html](http://www.curryrivel.org.uk/parish-council-1/agenda-and-minutes.html)). We set aside 15 minutes at the start of each meeting for a public session, welcoming questions and comments to enable our residents to engage with the council. We have also created a short questionnaire for residents to let us know what they think about how the Parish Council is spending their money. Look out for an announcement on the village website soon ([www.curryrivel.org.uk](http://www.curryrivel.org.uk)).

**WEIRD WORD**  
**insouciant**  
 Meaning: free from concern, worry or anxiety

**HA HA HA HA HA HA**  
 I needed a password eight characters long, so I picked Snow White and the Seven Dwarves



Your Community Website  
[curryrivel.org.uk](http://curryrivel.org.uk)





The  
**FIREHOUSE**  
Somerset

Follow for



@thefirehousesomerset

• news & events!

*Weekly Events\**

**MEGA MONDAY!**

Eat in Pizza £10 each

**2 FOR £20 TUESDAY**

Takeaway Pizzas 5-7pm

**PPP WEDNESDAY**

Pizza, Prosecco & Pud

**BURGS DAY!**

2 Burgers for £25

**FAMILY FRIYAY!**

Boardgames & Pizza

*We Are Open for...*

**Coffee, Cakes & Bacon Baps**

7 days a week!

*Eat In or Takeaway*

*Book Now for..*

**FATHER'S DAY LUNCH**

Sunday 18th June

*Bottomless Prosecco Brunch*

**SUPER SATURDAY**

Enjoy in our  
*Garden Terrace*

*Weekday Lunch Club*

Enjoy 5 lunches & the 6th is on us!

**WEEKDAY**

**Lunch Club**

Loyalty Card

free

DATE OF FIRST STAMP:.....

Stamp received with every weekday lunch menu meal purchased.  
Valid for 6 months from date of first stamp.

*Call us now ..*

**01458 887 447**

*.. see you soon!*

\* For more details T&C - check online  
[www.thefirehousesomerset.co.uk](http://www.thefirehousesomerset.co.uk)  
 Church Street, Curry Rivel TA10 0HE

Great for a quick bite,  
lunch dates, meetings & more!

# Curry Rivel Flower Show 2023

Sat 12<sup>th</sup> Aug 2023, 2.30-4.30pm

**Curry Rivel Village Hall**

<https://curryrivelflowersh.wixsite.com/curryrivelflowershow>  
[curryrivelflowershow@gmail.com](mailto:curryrivelflowershow@gmail.com)

Kevin Loe 252579



**T**he Curry Rivel Flower Show is back in 2023, but a week later than before.

This way you can attend that 'other' Flower Show (Taunton), the week before. You will be able to pick up an entry form in June from the Curry Rivel One Stop, Petrol Station, Sandpits Heating, Greenslade Taylor Hunt (Langport) and the Langport Library. You can also view the program online (see above).

## So how do you enter?

Bring your completed entry form to the Curry Rivel Village Hall on Thursday 10<sup>th</sup> August, 6.30-8.30pm. **For £1 you can enter any number of 89 competition classes. If you are under 17 you enter FREE.....**

There are 24 Vegetable classes, from the largest onion to unusual tomatoes. We have 25 Flower classes, lots of cut flowers and flower-arranging. Soft fruit classes, Floral Art, Cakes and Jams, etc. You can enter the painting classes or a photo. There are classes for the young, who enter for free.

If you cannot enter on Thursday night, email us your entry, name, contact details and which classes you are entering, you can pay your £1 entry fee on Saturday morning.

## What happens on the morning of the show?

Exhibitors should bring their entries to the Village Hall on Saturday 12<sup>th</sup> August, between 8-10.30am, all entries should be staged by 10.30am. If you have entered by email, remember to pay your £1 entry fee on Saturday morning. When you arrive on Saturday, you will be handed an entry card for every class you have entered and will be invited to stage your entries.

**The Show will be open to the public 2.30-4.30pm.**

Entry to the show is just £1, free if you are under 17.... so, bring the kids. For every class there will a judged result, resulting in a 1<sup>st</sup>, 2<sup>nd</sup> and 3<sup>rd</sup> place. There are many cups and prizes for the various sections, which are given out in a short ceremony at the end of the show. We have a delicious assortment of cakes to partake of with your cup of tea or coffee.

So come along and see if you agree with the judges' decisions.

## Can You Help?

On the evening of Friday, 11<sup>th</sup> August the staging, tables and chairs are laid out in the Village Hall.

We would be happy to have some help, preferably help with a few muscles. Help is also needed to dismantle the staging on Saturday, 12<sup>th</sup> August, after the show.

**The Curry Rivel Flower Show is a local show for local people. Please Take part.**

## Deborah wins £50!

"We had loads of entries for our competition in April" said editor Jane Hamlin. First out of the hat was Deborah Banbury. "My daughter Lauren was sure she would win but I pipped her at the post" said Deborah.



*Nigel Grinsted hands over the fab fifty quid to lucky Deborah*

# Langport and District History Society

Janet Seaton – Chair LDHS

We have arranged an evening group visit to the Somerset Rural Life Museum on Thursday 6th July. This is after the museum is closed to the public, so it gives us exclusive access to the collections, a private guided tour, and light refreshments. It will be from 7pm to 9pm, and costs £15 per person. If you'd like to join us please contact Peter Mottram on 07936 166841 or [motty.goodwood@yahoo.co.uk](mailto:motty.goodwood@yahoo.co.uk) to book a place.

## Bygone Days

Pierrot troupes were very popular in Britain in the first part of the 20<sup>th</sup> century. Curry Rivel had its own Pierrot Troupe who gave concerts to raise funds for local charities in the 1920s and 1930s. Their first concert was given at All Saints Hall on 2 February 1921. The report in the *Langport & Somerton Herald* of 5 February 1921 said, "The stage was beautifully lit up with electric light and presented a very artistic appearance. It was evident that a great deal of pain had been taken by the actors and actresses in bringing the performances to such a high standard and Mr E T W Meade, the stage manager, is to be congratulated on the success of his efforts.



The items on the programme were, judging from the rounds of applause, thoroughly appreciated and enjoyed by everyone, encores being frequently demanded. The troupe consisted of the following: Mrs Bateman, Misses H Baulch, H Purchase, Salway, E Savidge, Dorothy Scull, Phyllis Scull, Messrs C W Bateman, H Baulch, R Burrows, W Dyer, accompanist Miss J Norman; stage manager Mr E T W Meade."

If anyone has information about the Pierrots, please contact us on [langporthistory@fastmail.com](mailto:langporthistory@fastmail.com).  
<https://langporthheritage.org.uk>

## The Parish Assembly 2023

by Marcus Hembrow, Chairman, Curry Rivel Parish Council

**I am writing this the morning after the Parish Assembly in a moment of reflection. Last night's assembly was very well attended and I would like to pay thanks to all who attended and spoke. We had a total of 24 speakers representing some 27 parish-based groups from a wide range of Cultural, Recreational, Charitable and Religious interests.**

A repeated theme from the many speakers is how fortunate we are to live in a very special part of the world. Our community wide groups and individuals within our Parish give it the vibrancy we so enjoy. Human nature means that we too often take for granted what is around and nearest to us. A common theme of the Assembly was that many of our groups suffered heavily from Covid and the restrictions placed upon gathering and assembly and are only now beginning to find their feet again.

The Parish Council will always look to

find ways of supporting and helping where it can all groups, societies and clubs of any persuasion be they long established or just at the germ of an idea stage. We don't profess to know everything so please be in touch if there is a club or society or an idea you want support for. Our contact details can be found on [www.curryrivel.org](http://www.curryrivel.org).

We would like all groups, clubs and societies to check their listing in the Curry Rivel News to ensure that they are up to date. The Parish and our community thrives on the adage "you only get out what you put in" so please get involved and offer support where you can be that great or small. Thank you all for your support and may we continue to thrive.

**STOP PRESS .....STOP PRESS**

A very big thank you to all involved and to the many volunteers and helpers who made the Coronation Weekend

such an enjoyable event. The events and people involved are too numerous to mention now, but the Editor has agreed that a special edition of CRN will be published over the summer as a pictorial and historical record of the weekend.

## Wood Drove Kennels & Cattery

A family run 'home from home' in  
Langport for your dogs and cats, with  
plenty of space and cuddles!



**Viewings by prior  
appointment**

**Tue, Fri & Sat at  
2pm  
01458 250556**

[www.wooddrovekennelsandcattery.co.uk](http://www.wooddrovekennelsandcattery.co.uk)

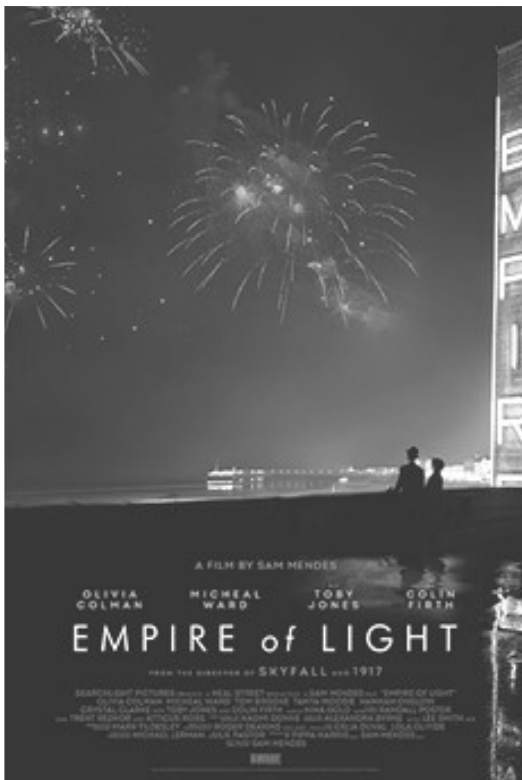
# Movies in the Village Hall

[mvhcurry.wixsite.com/films](http://mvhcurry.wixsite.com/films)

Alison Cockrell

## Empire of Light (15)

Friday 16 June 2023



**D**irected by Sam Mendes, Empire of Light is set in Margate in the early 1980s. Hilary (Olivia Colman) is a cinema manager trying to deal with her mental health while also having an affair with her boss. The cinema then hires Stephen, a handsome, young black British man and a bond develops between them which later evolves into a more serious relationship. Although their affair makes Hilary happy, Stephen is subjected to local prejudices.

This romantic drama shows how the bond of friendship can help find a sense of belonging and community.

Also stars: Micheal Ward, Colin Firth, Toby Jones and Tom Cooke.

Doors open at 6.30pm, show starts at 7.00pm in the Curry Rivel Village Hall.

Tickets £7 are available at the door. Refreshments available

- Trees & Hedges
- Dry-Stone Walls & Features (DSWA Professionals)
- Lime Mortar Walls & Pointing
- Gardening & Landscaping
- Fencing

Telephone: 01458 250 819  
Mobile: 07765 518168

**Sticks & Stones**

Emrys Evans & Denise Evans

## Clean as a whistle!

We can clean anything in your property.

Inside and out, including:

- Windows
- Gutters and downpipes
- Facias, soffits and frames
- Conservatories including roofs
- Solar panels
- Patios, pavements and drives
- Greenhouses
- Carpets

Just contact us to discuss your needs:

Tel: 01823 690154

Mob: 07590 636079

E: [kevin@bawdencleaning.co.uk](mailto:kevin@bawdencleaning.co.uk)

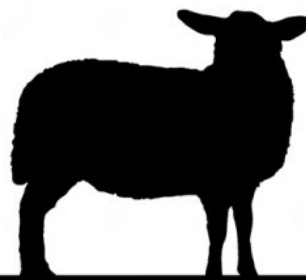
**BAWDEN**  
CLEANING SERVICES LIMITED  
Established 1982

## Naturally Beautiful Beauty Salon

*Naturally Beautiful Beauty Salon* is based in Curry Rivel offering a wide variety of treatments including eyelash extensions, lash lifts, CACI, radio frequency collagen lift, massage, facials and waxing.

Reiki and Reflexology are also available with Debbie.

Call 07903 727 590 or find us on Facebook  
[@naturallybeautifulbeautysalon](https://www.facebook.com/naturallybeautifulbeautysalon)



**BUTCHERS**  
LTD.

We're local, we're friendly and we're here to help. We stock a wide variety of meats including Game, Homemade pies, pasties, scotch eggs and faggots. And a wide selection of local cheeses and local seasonal veg.

6 Parrett Close, Langport, TA10 9PG

Tel: 01458 250778

Mon-Fri 7am—5pm

Sat 7am—4pm



# Curry Rivel Music

Malcolm Cotterill

## ACCORDION DUO

**No!** Not a pair of squeeze boxes! Nothing to do with the fairground, buskers or the oompah band! These were the classical instruments in the hands of two maestri. And what hands! Under the right a 47 note keyboard. Under the left, 120 buttons. In between, bellows as sensitive as anything you will ever squeeze!

On the 22<sup>nd</sup> April in St Andrew's, Curry Rivel, eyes were opened, ears entranced and prejudices ditched when Ryan Corbett – Countess of Munster Musical Trust artiste and BBC Young Generation artiste (go to his website) - and Djordje Gajic – his Serbian Professor at the Scottish Conservatoire – demonstrated compellingly why their instruments should be seen and heard as emotionally compelling as the violin, as versatile as the piano and as tuneful as any other instrument in the orchestra.

Of course, as a “new” instrument, circa 1800, it was not available to Bach but he would have been proud to hear his St Anne's Prelude and Fugue as it was heard in 2023. “New” music generally sounds like more of a threat than a promise of delight but those composers given the task of writing for these remarkable instruments comprising 10,000 parts have come up with music which is mistakable for the organ, the strings, the woodwinds and

the brass. Even the percussion gets an airing when a few fingers can be spared from their multitude of tasks. That performed by our duo was not just agreeable but appealing. Those who were present were delighted – many surprised at their delight – and all with a transformed view of an instrument that has been relegated to the third division for far too long. It was a memorable event.

The next concert is the Big One. With the support of the Welsh Government, the Arts Council of Wales and the National Lottery, Curry Rivel Music will be host to the Welsh Chamber Orchestra on Saturday 17<sup>th</sup> June 2023. National orchestras do not commonly feature in our programme. This is an event not to be missed. Ticket prices will be held at £12. There will be no reserved seats – so turn up in time for

a good seat and the 7.00 pm start.

For further information about Curry Rivel Music please visit [www.curryrivelmusic.org](http://www.curryrivelmusic.org) or email Mrs Anne Michell, Secretary, [anne.michell@btinternet.com](mailto:anne.michell@btinternet.com)



**01458 259679 / 07779 322130**

**S R BUILDING**

*Brickwork  
Plastering—Roofing  
Patios—Tiling  
Decorating*

**All General Building Work & Property Maintenance**

[stephen.reddings@live.co.uk](mailto:stephen.reddings@live.co.uk)

HUMPHRIES KIRK

**FREE LEGAL POP-UP** **HK**

**WHEN:** Third Thursday of every month, 9:30am to 5:00pm

**WHERE:** Great Bow Wharf, Bow Street, Langport

Drop in and meet local legal experts for Family Law and Estate & Lifetime Planning



Laura Staples  
Partner & Head of Private Client



Hayley Coyne  
Chartered Legal Executive

**To make a booking call 01460 279100**  
Initial 30 minutes will be free of charge...



**...that's refreshing**

**HK Humphries Kirk**  
SOLICITORS

Poole House, 17 Market Street,  
Crewkerne, Somerset, TA18 7JU  
☎ 01460 279100  
✉ [crewkerne@hklaw.uk](mailto:crewkerne@hklaw.uk)  
[www.hklaw.uk](http://www.hklaw.uk)

## Getting Older – Delicate questions and useful

theWI  
INSPIRING WOMEN

Sally Harvey

**O**ne thing we all have in common is we are all getting older. How often do we talk about getting old? Curry Rivel Women's Institute in their centenary year are looking out into the community and trying to raise their profile and with this in mind invited consultant geriatrician, author, and local resident Dr Lucy Pollock to talk about getting older; the theme of her bestselling book. The evening meeting was open to WI members but also their husbands, children, friends, and neighbours - as well as the wider village community and Lucy spoke to a full audience.

The evening began with a fascinating question, at what age will you be when you realise that your chance of living another year is less than 50/50? At what age do you develop a less than even chance of living another year? (You can find the answer at the end of this article.) The focus of the talk was, as we are living longer, how do we give those we love, and eventually ourselves, the best chance to grow older happily and healthily. With a large dose of humour, including anecdotes and examples from her practice, most of the messages were on reflection common sense. They included the importance of exercise. (It can't be overstated that this is the single most important step we can all take. Can you walk at 3 miles an hour?) But also, the value of talking to your doctor about your medication to ensure that you are taking the right drugs, and more significantly that all the drugs are needed as over prescribing is a common problem. She told us to remember our BRAN – What are the Benefits? What are the Risks? What are the Alternatives? And what happens if we do Nothing? The significance of listening to the older person's voice and not making assumptions about their quality of life may be assuming it is poor because their lifestyle is something you would not want for yourself. An older person may judge their own quality of life very differently to a younger person. Loneliness is very real and something to be aware of as a significant issue for many older people but be aware that some people can be alone but not lonely and others can be around people all the time and still lonely.

Difficult conversations were also addressed. Talking with a loved one about tricky things - such as when to stop driving and what sort of end-of-life experience they might want. Death is still a very taboo subject even in 2023 but it is important to talk about these matters with your nearest and dearest. Dr Lucy discussed symptoms that are normal and which are common, putting a lot of minds in the audience at rest! She led an active question and answer session after her talk, taking a wide variety of questions from the floor. Her advice was practical, and the audience left the village hall feeling informed and armed with some key messages about getting older - but above all the key one was to keep busy and enjoy life! Donations collected on the evening raised over £200 for Age UK Somerset.

Keeping busy and active as well as meeting people and building up a network of local friends can be achieved by joining the WI in Curry Rivel. In addition to their monthly meetings, they also have an active walking group and a regular book club as well as many other opportunities to join in craft activities, visits, and hear talks on a wide variety of subjects as well as enjoying the company of like-minded people over a cup of tea or coffee!

The answer to the question at the beginning by the way is 104!  
For more information on WI membership contact Anne Geach on 01458 253078

**Oh no!**

**The washing machine's not working!**

**Dishwasher...washing machine... tumble dryer...vacuum cleaner.** If it's gone wrong, **IT CAN** usually **BE FIXED**. And it'll cost you nothing to find out if it can be fixed as I will provide a no obligation quote.

Today people think fixing household equipment isn't worthwhile due to the high cost. But often that's not true. For example a new washing machine can cost you up to £900 or more. But normally we can fix it for under £100. A saving of up to £800! With none of the hassle and timescales of ordering and fitting a new machine. Just contact me for a no obligation quote. We're local.

JASON WILLIAMS

**07793 495091**

**AUTOWASH ELECTRICS**





## Home Grown Talent

Carolyn Paton

**A**pril's WI meeting was led by friend and member Linda Dodimead, who has made a study of her family history. Her experience as an assisted passenger to Australia (and eventual returnee) prompted a particular interest in those who made this passage before her. She entitled her talk 'From convict to £10 Pom'. A £10 flight to a new life on the other side of the world was not available to the first immigrants, many of whom were there not by their own choice but as a consequence of being viciously sentenced to deportation for what we would regard as relatively minor offences.

They went under sail in atrocious conditions; the first convict ships left in the late 1780s, and during the next 80 years 168,000 convicted men women and children made the journey under duress. Britain's prisons were grossly overcrowded as were the moored prison ships - 'hulks' - and it suited the government to despatch these unwanted and somewhat anti-social people.

Those who had paid their passage and wanted to make a better life for themselves, and their families endured the long weeks of voyage under sail in very basic circumstances, even for the standards of the time. Travelling so far in the early centuries of emigration made it unlikely that any but the most successful would be able to return, a huge step to take, though some did manage to do so.

Linda spelled out the 'push' versus the 'pull' factors which triggered departure for some volunteers. Conditions in Britain were deteriorating in certain areas of the country; times were changing, there was unrest as a result of mechanisation, and that was leading to unemployment. Religious dissenters increasingly felt that their best option was to leave, at first for the Americas and then to Australia. Locally the wool trade became less profitable as it moved North, impoverishing the sheep farmers of the South-West. Not everyone chose to go for negative reasons. The lure of gold attracted some, there was a demand for labour down under, and sometimes higher wages were on offer too. As time went by, some went to join friends and family who had already settled, linking up to form new communities from the old country.

Linda's interest in tracing her own family led her to the discovery of details of other local people's journeys and subsequent experiences. She unearthed fascinating facts about inducements that were offered to individuals to go and make a new life in Australia. Free emigration was advertised and proposed to single women and to

# the WI

## INSPIRING WOMEN

those with skills in short supply. Enterprising Poor Relief officers in South Petherton proposed borrowing £100 (£14,470 today) to assist emigration, thus removing them from the charge they represented on the Parish. Not exactly a philanthropic act! Lists were published of the necessary supplies for the voyage and for setting up once at the destination. Whether the impoverished ex-residents of South Petherton were able to acquire them is open to question. For anyone, prosperous or not, making this radical change in the early centuries, adaptation must have been quite a challenge. Initially, would-be immigrants stayed on ship before transferring to tented camps. Conditions were not always very salubrious and someone who eventually became well-known for her welfare work with immigrants, particularly with women and families, was Caroline Chisholm. She features today on Aussie banknotes.

There were those who became very successful in their new lives down under, and indeed there are several documented local cases in the records. Linda herself had a 36-year career in Australia after arriving as a £10 Pom, only becoming a 'boomerang' on her return in 2013, settling in the Southwest and joining Curry Rivel WI. Her wide-ranging and interesting talk fascinated her audience who thanked her for sharing so much of her thought-provoking research, feeling that their eyes had been opened in a new way. Anyone wishing to know more about the WI membership should contact Anne Geach on 01458 253078

### PRIME PLUMBING

- Qualified to provide plumbing and related electrical services.
- Specialist in kitchen and bathroom planning and installation.
- Tiling, plastering and flooring work undertaken.
- Will also investigate and repair plumbing and related electrical problems.
- Advice and estimates provided free of charge.
- No VAT charges.



For any work required, please contact  
**Richard Ovenden, Prime Plumbing**  
 on **07800 543795** or e mail: [prime.plumbing@btinternet.com](mailto:prime.plumbing@btinternet.com)

# Could you be a Bus Champion?

The Somerset Bus Partnership is very keen to encourage local people to come forward to represent their area. They are called Bus Champions. By the beginning of this year there were 155 bus champions across Somerset, but there isn't one for Curry Rivel.

We need someone who has an interest in improving the bus service in our area. If you feel that you could help either by becoming our local bus champion or suggesting someone that you feel could undertake that role get in contact:

<https://www.somersetbuspartnership.co.uk/contact-us>

## What does it involve?

- Ensure that the information about our bus services are easily available and up-to-date.
- Check that the relevant information is on local noticeboards and on the village website.
- Inform villagers of current services and any changes through the Curry Rivel News and social media.
- Report any problems with bus shelters, signs, timetable cases etc. so that they can be remedied.
- Relay any complaints or compliments from passengers to the bus operators.
- Report incidents of poor service, lateness, cancellations etc. to the relevant operator and Somerset Council.
- Attend local meetings of the Somerset Bus Partnership and join in with its activities.
- Lobby your councillors and MP about supporting and improving bus services.



A promotional graphic for the UK Government's 'Help for Households' scheme. It features a large '£2' and the text 'Single Bus Fares To be extended to June 2023'. At the bottom, it says 'To find out how the Government can help you Search 'Help for Households'' and shows a small bus icon.

**It's easy!**  
**TO ADVERTISE IN HERE**

*Just contact the  
 Advertising Manager:  
 Nigel Grinsted*

07734 226000  
 crn.nigel@outlook.com

## Curry Rivel's Coronation

*Sally Harvey*

Children at **Curry Rivel School** were very much involved in the village's Coronation celebrations. The school staged 'pre-enactment' of the Coronation in St Andrew's Church on Friday 5<sup>th</sup> May. The play was a triumph, and we will write a report about this brilliant event, along with photos, in a future issue of the Curry Rivel News.

An advertisement for Killens Chartered Surveyors &amp; Property Agents. It features a photograph of a large, traditional stone house with a tiled roof. The RICS logo is in the top left. The Killens logo and name are in the top right, with the website 'killens.org.uk' below it. Text at the bottom reads: 'From selling or letting your home to requiring a formal valuation to fine art auctions and house clearances. We can assist. Contact us for further help. Somerton - 01458 397000 somerton@killens.org.uk'

VACANCY

# Join the Curry Rivel News team



*We're looking for a Secretary to join our team. The post is voluntary.*

## The job entails:

- Attending the remote monthly team meeting using Zoom.
  - (The meeting is held at 7.30pm on the first Tuesday each month and lasts for no longer than 45 minutes.)
  - Drafting the agenda, taking meeting notes, writing minutes, drafting the agenda.
  - Emailing documents to the other team members.
- Use of a PC plus experience with MSWord are necessary.

If you'd like to join us please call the Editor, Jane Hamlin, on **01458 252946** or email [curryrivelnews@gmail.com](mailto:curryrivelnews@gmail.com)

Gas  
contracted  
installers

## SEAN MOUNTER

### Plumbing & Heating Engineer

For full Gas & Oil Central Heating

CTIB  
Trained

**Fully apprentice served with City & Guilds qualifications**

**All types of plumbing & heating installed, Boiler changes, Heating upgrades**

**Complete bathroom, shower rooms installation incl. tiling, building work etc.**

**No job too small. No VAT. Free competitive quotes and advice**

**Tel: 01458 253015**  
**Mob: 07748 183282**

**Herald House,**  
**Langport TA10 9RQ**

# D.D.I.Y

## Don't Do It Yourself!

Do you have any work to do in or around your property that you can't or don't want to do? If so, we could do it for you.

We are a husband and wife team with over 30 years of home improvement, refurbishment and maintenance experience.

- Free Estimates
- Reliable
- Personable
- Clean & Tidy

**Contact Roy or Debbie**

**01458 762604 or**  
**07920 192471**

Find us on Facebook  
DDIY Don't-Do-It-Yourself

# JONES

## GARDEN MAINTENANCE

HEDGES  
BORDERS  
LAWNS  
AND MUCH MORE

TO ENQUIRE & FOR MORE INFORMATION CALL TRACEY & SEAN ON:

# 07815 082984

# **"BOOTHIE"**

## General "Handy Man" Services

- **Window Cleaning** with Reach & Wash System
- **Guttering Cleaned & Cleared**—Give your gutters that spring clean
- **Grass Cutting; Shed Refelting**
- **UPVC Cleaned & Revitalised**—we can restore your Fascias, soffits, door & window frames to look like new

If the job you need isn't listed, just ask  
Call Mike Booth on **01458 251498** or **07872 345623**  
email: [mikeboothie@btinternet.com](mailto:mikeboothie@btinternet.com)

### St. Andrew's Church

To find out more, please visit us at:  
[www.curryrivel.org.uk](http://www.curryrivel.org.uk) or  
[www.achurchnearyou.com](http://www.achurchnearyou.com)



*We warmly welcome visitors and new members of the community to any of our services and other events.*

## June

### Thursday 1st

10.00 **CR OSR** - Holy Communion BCP

### Sunday 4th

10.00 **FH** - All Age Family and Friends Service + refreshments

11.15 **FH** - Said Communion CW

6.00 pm **CR** - Evening Prayer

### Sunday 11th

9.30 **SW** - Holy Communion BCP

11.00 **CR** - Parish Communion CW  
**+ Kids Church**

### Tuesday 13th

10.00-12.00 **CR OSR** - Craft & Coffee

### Thursday 15th

10.00 **CR OSR** - Holy Communion BCP

### Sunday 18th

9.30 **FH** - Morning Worship

11.00 **CR** - All Age Family & Friends Service + refreshments

12.15 **CR** - said Communion CW

### Sunday 25th

9.30 **FH** - Parish Communion CW

11.00 **CR** - Morning Worship CW  
**+ Kids Church**

6.00 pm **SW** - Evensong BCP

### St. Andrew's Rotas June

**Brass** - Sue Blackwell

### Flowers

3rd - Sue Randell  
10th & 17th - Diana Talbot-Williams  
24th & 1st July - Marie-Anne Owen

### Cleaning

3rd - Tina Geary  
10th - Wendy Graves  
17th - Anne Geach  
24th - Anne Goff



## Scott's spot



### From pariah to the palace

At the time of writing, the nation is emerging from the Coronation celebrations. Ceremonial uniforms have been hung up, the Crown Jewels and other 'regalia' returned to the Tower of London, the Coronation Concert stage dismantled and *Take That* may be planning their next tour. It's been quite an occasion, one I won't quickly forget.

For many, this was a significant moment. But I sense that, for one person in particular, the Coronation weekend has marked the end of a very long journey. I refer to Queen Camilla for whom the last 40 years have been marked by the gradual evolution of her public profile. Those years saw the undoubted pain of being labelled the 'third person' in a popular royal marriage, with all the associated press attention and messy web of truth and lies. As time has passed, we've witnessed the careful shaping of Camilla's public profile. Titles have come and gone, her rank elevated, her role as a Working Royal expanded and her portfolio of charitable patronages multiplied. The journey has, I expect, been at times difficult, one requiring great tenacity, but a journey now largely completed. Crowned Queen Camilla, sitting enthroned alongside her husband King Charles III and then at the Coronation Concert taking her place at the heart of the Royal Family, speaks volumes. What a journey of acceptance from pariah to palace.

**CR** = St. Andrew's Church, Curry Rivel  
**CR OSR** = Old School Room, Curry Rivel, 'behind' St. Andrew's Church  
**FH** = St. Martin's Church, Fivehead  
**SW** = St. Catherine's Church, Swell

### From St. Andrew's Registers Funerals

*May God grant them eternal rest.*  
19th April - Memorial Service for Mrs J M H (Judy) Yeates († 23rd March)  
10th May - Funeral service at Yeovil Crematorium of Heather Mitchell  
In memoriam  
Mrs Jean Willson († 24th April)

### Scott's Spot ctd. . .

As I reflect on that journey and the likely enormous efforts involved, I suspect that some who read this might think that a similar pattern is true when it come to us people and God. It's a popular misconception that the Christian faith requires of us a Camilla-like journey. The thinking goes that we put in the work, gradually cleaning up our act and doing the right things, in order to be accepted by God. As Camilla has been accepted by the nation through time and effort so too, we think, God will accept us through ours. But the Bible's message is that God's route to His acceptance is very different.

Several times during the Coronation service, references were made to Jesus' words from Mark 10 verse 45 – '**The Son of Man (Jesus) came not to be served but to serve...**'. King Charles echoed these words in his prayer and the Archbishop also referred to them, challenging us to seek the good of others above ourselves in the pattern of Jesus. What we didn't hear was the rest of Jesus' sentence: '**...and to give his life as a ransom for many**'. Here lies what separates the Queen Camilla approach to national acceptance, and the acceptance that God offers to all. In these words we find that it isn't our work or effort that brings us acceptance with God, but rather the acceptance by faith that Jesus' life, given in payment for our sin, was fully sufficient. It's from this that grateful Christian service flows.

For Queen Camilla the journey from pariah to the palace has been long and hard, and I pray for Christ's sustaining grace for both her and King Charles as they serve this nation in the years to come.

And I pray too that we don't misunderstand the Christian faith which is so central to the recent Coronation, and imagine our journey into God's acceptance as similar. No... our journeys of acceptance into the palace of God's Kingdom don't rely on our efforts, plans or manoeuvrings, but rather on the work of Jesus, the Servant King. Have you grasped the difference?

With prayer for you and those you love,  
Rev'd Scott



**Craft & Coffee**

**Tuesday 13th June 10.00 - 12.00**  
in the Old School Room



People can bring their craft work to share their knowledge and expertise with others.

If craft is not your thing, then do come along just for a chat, with homemade cakes and refreshments available.

Please come and join us.

**St. Andrew's Flower Guild**

**Workshop — Tuesday 20th June**  
**9.30 - 12.30**

in the Old School Room

There will be a workshop exploring the possibilities of going Oasis-free in our arrangements. Different techniques will be demonstrated.

Open to all Guild members and anyone else who might be interested.

**Bow House Physiotherapy Practice**

Stacey's Court Car Park  
Bow Street  
Langport TA10 9PQ  
01458 253388

**Chartered Physiotherapists**

Also available:-

**Foot Health and Orthotics, Massage Therapy, Homeopathy, Occupational Therapy, Acupuncture, Bowen, Reflexology, Hopi Ear Candles, Pilates Classes.**

[www.bowhousephysiotherapy.co.uk](http://www.bowhousephysiotherapy.co.uk)  
[info@bowhousephysiotherapy.co.uk](mailto:info@bowhousephysiotherapy.co.uk)

**Forsey and Son**

ESTABLISHED 1946  
INDEPENDENT FAMILY FUNERAL DIRECTORS  
MEMORIAL MASONS • PRE PAYMENT PLANS

Pound Pool, Somerton, Somerset TA11 6LZ  
Telephone 01458 272297 or Langport 01458 250509

28 High Street, Butleigh, Glastonbury, Somerset BA6 8SY  
Telephone 01458 850654

Willowfields, Loverside Lane, Glastonbury, Somerset BA6 9GY  
Telephone 01458 831020

[www.forseyandson.co.uk](http://www.forseyandson.co.uk)



**United Reformed Church**



**June**

**Services at 10.30 in our Chapel and simultaneously via Zoom**

If you wish to join with us via Zoom please email [sbeney6@gmail.com](mailto:sbeney6@gmail.com) with a request to be included in the Zoom link invitation list.

**Sunday 4th, 11th, 18th and 25th.**

At the time of this June CRN going to print service leaders have not been finalised. Please keep an eye on the notice board outside the URC Chapel for service information.

**URC Minister:**

**Rev. Tim Richards 01458 252799**

**Dear Friends,**

I wonder how often, when faced with a particular situation, we find ourselves falling back on opinions and views that are our 'default' positions.

I wonder, do we ever stop and think 'why do I hold this particular view?'

It may well be that we have brought our experience, intellect and reasoning to bear and could argue cogently for it, or...

....or it could be what I heard being discussed on the radio recently which was called 'unconscious bias'. Have you heard of this? Those things that as mentioned above we default to, and it could be about almost anything, where we choose to sit on a bus, what we read or watch, how we vote, but more importantly, how we react to other people. Do we favour some over others, not related to how long we have known them or the Facebook status of our relationship, but because an invisible barrier is raised and we can't seem to get beyond it?

By its very nature, and the clue is in the name, this bias is 'unconscious' - but surely we should not be able to blame our prejudices on this theory?

We are an inclusive, outward looking group of people and we welcome all: wherever you are on your life/spiritual journey we welcome you without regard to age, gender, denominational background, sexual orientation, race or ability. We respect the traditions of our past, engage with present and look forward to the future, believing that Christian truth is not contained in static propositional statements but is ever changing and constantly evolving. Tea/coffee is served after every service providing the opportunity to meet and chat with each other and the preacher.

**Dear Friends ctd . . . .**

Are we not called beyond any inbuilt reluctance (if I put it no stronger than that) to an acceptance of those made in the image of God? Deuteronomy 10: 17-19 reads

*'For the Lord your God is God of gods, and Lord of lords, the great God, mighty and awesome, who is not partial and takes no bribe, who executes justice for the orphan and the widow, and who loves the strangers providing them with food and clothing.'*

Or if we look to the New Testament, Romans 15: 5-7,

*'May the God of steadfastness and encouragement grant you to live in harmony with one another, in accordance with Christ Jesus, so that together you may with one voice glorify the God and father of our Lord Jesus Christ. Welcome one another, therefore, just as Christ has welcomed you, for the glory of God'*

Overcoming bias or prejudice is not easy, particularly if it has its roots in our unconscious. It is true that something which occurred long ago, something we may not even recall clearly, can echo across our lives and make us susceptible to responding in what becomes a de-facto programmed response.

The road of faith, I have always believed, is about setting us free, not to behaving recklessly, but to that most difficult of ideas credited to Augustine of Hippo;

*'Love god and do what you will'.*

May *'what we will'* be acceptable to the heart of the God who holds us close and wills us to fullness of life and full acceptance of others.

**Yours, Rev. Tim.**



**CRESCENT FUNERAL SERVICES**  
SIMON HELLIAR-MOORE

An Independent Family Funeral Service for Langport,  
Curry Rivel and Surrounding Communities

Offering a 24 Hour Service from our  
Qualified Funeral Directors

Care, Respect and Compassion - 'The Crescent Way'

[www.crescentfunerals.co.uk](http://www.crescentfunerals.co.uk)

01458 252505 ~ 01458 259476

Bow House, Bow Street, Langport, Somerset. TA10 9PQ  
Townsend, Curry Rivel, Langport, Somerset. TA10 0HP

Prepaid Funeral Plans - Private Chapel Of Rest - Bespoke And Inclusive Services

**SJH**  
CARPETS &  
FLOORING



Langport



- CARPETS & VINYL
- WOOD & LVT
- BLINDS & SHUTTERS
- DOMESTIC & COMMERCIAL

THE OLD POST OFFICE,  
38 NORTH STREET,  
LANGPORT,  
TA10 9RH

T: 01458 887301 E: [langport@sjhcarpets.co.uk](mailto:langport@sjhcarpets.co.uk) W: [www.sjhcarpets.co.uk](http://www.sjhcarpets.co.uk)  
MONDAY-FRIDAY: 9-5 SATURDAY: 9-1

Also at Tythings Commercial Centre, Wincanton & High Street, Tisbury

## Wiltown Garage

Wiltown, Curry Rivel TA10 0JF  
Mon-Fri 8am to 6pm  
Saturday 8am to 12pm  
[www.wiltowngarage.com](http://www.wiltowngarage.com)



- ◆ Batteries
- ◆ Exhausts
- ◆ Clutches
- ◆ Tyres

Vehicle Servicing & Repairs  
Air Conditioning Servicing  
Breakdown Recovery Service  
Car Valeting Inside & Out  
Body Repairs & Car Sales

Phone **01458 252 166**  
Mobile **07921 788 169**

We can service your **NEW CAR**  
and it **WON'T AFFECT**  
The Manufacturer's  
**WARRANTY**. Ask  
us for details







# ...In June

## Regular Events

### MONDAY

10.00	Art Club	Village Hall
10.00	Table Tennis (kevl@outlook.com)	Village Hall
6.00	Pilates	Primary School
6.45	Explorer Scouts	Scout Hall, Langport

### TUESDAY

10.00	Craft & Coffee (2nd only)	Old School Room
10.00	Keep Fit (nicky.barker1@btinternet.com)	Village Hall
2.30	Forget-Me-Not-Café	Village Hall
4.30	Rainbows/Brownies	Drayton Village Hall
5.45	Pilates	Primary School
6.00	Cub Pack	Scout Hall, Langport
6.30	Rangers	URC Hall
6.30	Langport Youth Club	Ridge way Hall
7.00	Short Mat Bowls	Village Hall
7.30	Sedgemoor Garden Club (2nd only)	All Saints Hall L'port

### WEDNESDAY

10-11am	Movement to Music (Age UK)	Village Hall
10.30	Sparklers Toddler Group	Old School Room
5.30	Beavers	Scout Hall, Langport
6.30	Cycling Club	Bridge Cafe
6.45	Scouts	Scout Hall, Langport
7.30	Bell Ringing	St. Andrews
7.30	Parish Council (1st only)	Village Hall

### THURSDAY

10.00	WI (2nd only)	Village Hall
2.00	Short Mat Bowls	Village Hall
6.30	Yoga	Village Hall

### FRIDAY

9.30	Pilates	Village Hall
9.30-2	Friday Club	Village Hall
7.30	Movie Night (3rd only)	Village Hall

### SATURDAY

9.00	Cycling Club	Bridge Cafe
------	--------------	-------------

## Some Useful Telephone Numbers

### Youth Organisations

Beavers, Cubs, Scouts, Explorer Scouts	(gslthelevelsscouts@gmail.com)
Rainbows	01823 698940
Brownies	251953
Rangers	075 07214 791
Langport Youth Club	0793 899 338

### Sports Clubs

Short Mat Bowls Club	251616
Cricket Club	01823 698849 & 01458 252791
Yoga	07789 862548
Pilates	07769 351984

### Social

Flower Show	250311
Out & About	0788 737 7942
Royal British Legion	01460 281115
Twinning Association	01460 281905
Women's Institute	253078
Rotary Club of Langport & Somerton	252813
Sedgemoor Garden Club	250091
Heale Lane Allotment Association	741880
Curry Rivel in Bloom	762296
Friday Club	252791
Health Walks	250725
Mother and Baby	07732 197030
Forget-Me-Not-Café	252710 & 396123
Movement to Music, Becky Bostock	07706 734604

### Arts

Entertainers	250311
Music Club	250863
Art Club	253126

### Community Facilities

Food Bank (help@curryrivel.org.uk)	0771 6792760
Village Hall (crvhbookings@gmail.com)	07789 661288
Old School Room Bookings (crosrbookings@gmail.com)	250655/253856
United Reformed Church Hall - Bookings etc.	259391

### Community Services

Doctors	250464
Police	101
Yarlington Housing	01935 404500
Footpath & Litter Warden	johncasebourne@sky.com

### Education

Little Pips	252822
Primary School	251404
Huish Episcopi Academy	250501
Huish Episcopi Leisure Centre	251055

### Local Authorities

Parish Council (Clerk) clerk@curryrivel.org.uk	07534 318840
District Council	01935 462462
County Council	0300 123 2224

### Religious

Church of England Rector	251375
Churchwarden	259003
Secretary PCC	251355
Organist & Bell Ringing	253856
Flower Guild	252710
Roman Catholic Church, Somerton	07483 120 603
URC Minister	252799
Messy Church	01458 762523

### Pick up your Prescription from the Post Office

Do you pick up repeat prescriptions from Langport surgery? If so you can request your medicine to be delivered to Curry Rivel Post Office in the BP petrol station. When you reorder, simply ask for delivery to Curry Rivel PO (including reorders on the surgery website). The surgery delivers to the Post Office every Tuesday and Friday. And while you're in the Post Office you can pick up a cappuccino too!



## Deadlines for July 2023 Edition

<b>Advertising:</b>	5pm Thursday 8th June
<b>Send to:</b>	crn.nigel@outlook.com
<b>Comments &amp; Articles:</b>	5pm Monday 12th June
<b>Send to:</b>	curryrivelnews@gmail.com

The Curry Rivel News is published monthly by the Curry Rivel News Group and is delivered free to households within the Parish.

<b>Editor</b>	<b>Jane Hamlin</b>	252946
	<b>curryrivelnews@gmail.com</b>	
Advertising	Nigel Grinsted	0773 422 6000
	crn.nigel@outlook.com	
Treasurer	Graham Finlayson	0790 0082194
	cr.news.treasurer@gmail.com	
Publisher	Mike Davis	0786 799 1338
	crnpub@gmail.com	
Distribution	Bernard Hall	252378
	bernard@hall159.plus.com	
Secretary	Natalie Gunter	
	crngsecretary@gmail.com	
Church Pages	John de Ronde	251355
	johnderonde51@hotmail.com	

# Ringling in the Coronation

Patrick Rendell

**O**ur Village Coronation celebrations began on Friday 5th May when our St Andrew's ringers rang the bells prior to the school's adaption of the Coronation service acted out in the St. Andrew's church to a packed congregation.

On the following day, we marked the completion of the actual Coronation with a full Quarter-Peal at 4pm.



**sasp**  
Somerset Activity & Sports Partnership

**SOMERSET HEALTH WALKS**  
#MOVEMORE

## Curry Rivel Health Walk @The Green, Curry Rivel

1st & 3rd Wednesday of the month 10.30am

For more details contact Andrew Jordan 01458 250725