

July 2021



PUBLISHED MONTHLY AND DISTRIBUTED FREE TO ALL CURRY RIVEL RESIDENTS; ALSO AVAILABLE IN VARIOUS OUTLETS AROUND CURRY RIVEL

‘Caring, Curious and Confident’: News from the school

Ali Pook - Headteacher

It has been difficult to know what time of year it is when we have had such cold wet days. I commend the children managing with ‘wet playtimes’ when they have had to stay in.

As head teacher I am often conducting ‘learning walks’ to assess the quality of teaching and learning across the school, and the SENDCo (Special Educational Needs Co-ordinator) and I have been conducting more formal lesson observations. We have been impressed by the children’s ‘behaviour for learning’ in all classes. The lessons we have seen are representative of the broad, balanced and ambitious curriculum we are teaching here at Curry Rivel, exposing the children to high level vocabulary, building on prior learning and ensuring the children are gaining new knowledge and practising new skills. In Pippin class, I was impressed with Pippin pupils’ use of ‘ten frames’, Deines equipment and number lines to start adding numbers; Maigold class demonstrated great tennis skills, learning how to hold a racket and how to hit a ball with accuracy; Gala have been writing their own creative version of the Owl and Pussy cat; Discovery were making predictions about their new text ‘The

Great Kapok Tree’ - English work linked to their learning about the Amazon rainforest; Camelot pupils were learning how to compose a piece of music using the ‘Garageband’ App (Chords, major and minor notes included!) and Blenheim were learning the complexities of rounders rules and how to avoid running your teammates out in a game! All lessons aim to develop ‘sticky knowledge’ so that children not only ‘know more’ but ‘remember more’. Of course, we have areas to work on, and I am impressed that the staff here are so committed to their own professional development and improvement.

At Curry Rivel Church of England Primary School we nurture our children to become ‘Caring, Curious and Confident’ young people. We have chosen a tree with its leaves and fruit to symbolise our school vision and values. The tree represents the school, rooted to the village community and local area. The leaves, our ‘Caring, Curious and Confident’ children, and the fruit, our school’s core Christian values. It is only by working together with our families will our children thrive and grow, so we were very thankful for virtual parents’ evenings...despite the technical hitches!

...continued page 3



Working together to help our village look beautiful !



Gina Beauchamp - cribsomerset@gmail.com 01458 762296

All our planting around the village should be in full bloom by now. We hope you enjoy the displays.

We are always looking for more people to help water, especially during the summer and hot weather. The War Memorial garden and hanging baskets need watering every day in high summer. Could you possibly spare 30 mins on one of your walks around the village to water the war memorial and /or Granny's garden? Hoses and watering cans are provided. We would be very grateful and you would be doing your bit to help the village look great. Please get in touch if you feel that you could help in any way, no matter how small. If there were two of you it would be even quicker. Thank you.



The grass at Granny's Garden was finally cut, thank you to Truck. We leave it long to let the spring bulbs die down, this year we had 'No Mow May' which wasn't hard to do as the weather was so wet and awful it really wasn't possible to cut the grass until June! Once again we rely on volunteers to cut the grass there and if you have a battery operated mower and could offer to cut the grass there for us a few times during the summer months that would be wonderful. We have volunteers, but only three at the moment, so the more we have the less often you would have to do it!

Front Garden Competition

This was judged in the last week of June and the results will be published in the August edition of the CRN. There were ten entrants. Thank you to all who entered and help to keep the village looking lovely. Also thank you to those who didn't enter but still have beautiful gardens. Curry Rivel really does look lovely to drive or walk through.

Jobs to do in the garden in July

- Keep watering and feeding everything. Put out extra buckets and bowls when it rains to save rainwater. Use a water butt to save using tap water. Put saucers under pots to save water escaping.
- When watering, make sure to water the roots of the plants, not the leaves. Too much water on the leaves can make them turn black. Take the spray nozzle off your watering can unless you are watering small seedlings, the water will go where it is needed, at the base of the plant.
- Dead head roses and other blooms to keep them flowering for longer. When dead heading petunias and fuschias especially make sure you take off the whole head not, just the flower, or they will make seed instead of new flowers.
- Take side shoots off tomato plants and make sure they are tied up securely. Feed once a week. Water at the same time each day to avoid problems such as blossom end rot on larger tomatoes. Take off the lower leaves under the first truss.
- Cut off the lead on runner beans once they reach the top of the poles.
- Look after your lawn in the heat. Don't cut it too short and leave a layer of mulch from grass cutting to help protect it.



'Caring, Curious and Confident': News from the school

...Continued from front page

It has been wonderful to see the Year 6 pupils completing their 'Bikeability' lessons this week. (A real sense of some normality). We are also looking forward to some more usual summer events like country dancing and sports' day (with or without an audience?)

We had a great Pyjamarama day wearing our pyjamas and sharing our favourite literature, stories and books. A 'random reading raffle' meant many children 'won' books to take home and keep. It has also been pleasing to see the librarians in action, with all our older classes borrowing books over the week from our lending library

Somerset Day was on Tuesday 11th May and the children has a session in their classes and in assembly to learn about our amazing county. The PTA are still busy, despite the barriers and the PTA Silly Spoons competition raised an amazing £97.50.

You would think we were a bit quieter in school

right now, but as you can see, school life continues. If you would like to find out more about our warm and welcoming school, nursery and baby room, please do not hesitate in contacting us.



D.D.I.Y

Don't Do It Yourself!

Do you have any work to do in or around your property that you can't or don't want to do? If so, we could do it for you.

We are a husband and wife team with over 30 years of home improvement, refurbishment and maintenance experience.

- Free Estimates
- Reliable
- Personable
- Clean & Tidy

Contact Roy or Debbie
01458 762604 or
07920 192471

Find us on Facebook
DDIY Don't-Do-It-Yourself

PRIME PLUMBING

- Qualified to provide plumbing and related electrical services.
- Specialist in kitchen and bathroom planning and installation.
- Tiling, plastering and flooring work undertaken.
- Will also investigate and repair plumbing and related electrical problems.
- Advice and estimates provided free of charge.
- No VAT charges.



For any work required, please contact
Richard Ovenden, Prime Plumbing
on **07800 543795** or e mail: prime.plumbing@btinternet.com



We're local, we're friendly and we're here to help. We stock a wide variety of meats including Game, Homemade pies, pasties, scotch eggs and faggots. And a wide selection of local cheeses and local seasonal veg.

6 Parrett Close, Langport, TA10 9PG
Tel: 01458 250778

Mon-Fri 7am—5pm Sat 7am—4pm

Curry Rivel Cycle and Footpath...

We still need some help to reach our target

Tony Greenaway

Thanks to over 70 supporters we have now raised (at the time of writing) £1890 and are optimistic that the local Parish Councils will make a financial contribution towards our target of £5000

However, we are still short of our target, so this is yet another appeal for those who have not yet responded to dig deep into your pockets and make a contribution to what could be an amazing benefit to the community of Curry Rivel as well help reduce traffic and dangerous emissions.

Please also ask your friends and neighbours if they can contribute. Even just £5 from every household would see us reach the target

https://www.justgiving.com/crowdfunding/cyclefootpathcurryriveltolangport?utm_term=G4qZgKw5q

Donations can now be made by cheque (to Curry Rivel Parish Council with reference 'Cycle Footpath Study' on the back) This can be posted to The Clerk, Curry Rivel Parish Council,

Greystones, Churchway, Curry Rivel. TA10 0EE Or donate by bank transfer contact the Clerk for details

Email: curryrivelparish@outlook.com Tel: 07714 510828.

We shall soon be shortlisting our partners to carry out the research and will provide more news on this in the August Curry Rivel News and on the Community Website

www.curryrivel.org.uk

If you have views on this subject why not drop a line to me at the website: editor@curryrivel.org.uk

SCAN ME



JustGiving™



Peppard S

Funeral Directors

Chapel of
Rest
Townsend
Curry Rivel



Bow House
Bow Street
Langport

01458 252505

Memorial Masonry Service



Golden Charter
Funeral Plans

- Trees & Hedges
- Dry-Stone Walls & Features (DSWA Professionals)
- Lime Mortar Walls & Pointing
- Gardening & Landscaping
- Fencing

Telephone: 01458 250 819
Mobile: 07765 518168

Sticks & Stones

Emrys Evans & Denise Evans

SJH
CARPETS & FLOORING
Langport



- CARPETS & VINYL
- WOOD & LVT
- BLINDS & SHUTTERS
- DOMESTIC & COMMERCIAL

THE OLD POST OFFICE,
38 NORTH STREET,
LANGPORT,
TA10 9RH

T: 01458 887301 E: langport@sjhcarpets.co.uk W: www.sjhcarpets.co.uk
MONDAY-FRIDAY: 9-5 SATURDAY: 9-1

Also at Tythings Commercial Centre, Wincanton & High Street, Tisbury

SOMERTON U3A

Sue Haigh

A thank you to all who supported the u3a day in June, it was lovely to see you and meet new members.

We have two meetings and our AGM in July all via Zoom.

On Friday 9th July at 11.00 "Great British Eccentrics and Rogues" by Paul Robbins. Have you ever wondered why Britain has had so many eccentrics? This is a highly amusing talk which looks at some of the World's great eccentrics and rogues who just happen to be British.

Friday 23rd July we are holding our AGM via Zoom which is scheduled to start at 10.00. This will be followed at 11.00 by "My Musical Life in Russia and How I nearly became James Bond" by Prof Gerald Seaman. In the past he has lectured at many different universities including Columbia, Brown and Rutgers in the United States, Canada, Australia, Germany,

Russia and elsewhere. In particular he had the good fortune to spend considerable periods in Russia, including a whole year when he was engaged in postgraduate study at the then Leningrad Conservatory.

For further information on how to join us please visit the Somerton u3a website, or email membership@Somertonu3a.uk.

It's great to be back Pop in and see us at The Firehouse

We're open seven days a week
serving food every day

New covered heated garden terrace-
great for cyclists, walkers and dogs

Weekdays we open at 10am serving

- Somerset Roasted Coffee
- Freshly Baked Pastries
- Lovely Cakes
- Eat In or Take Away

Weekday Lunch from £6.50

Weekend Brunch 9am-11.30am

Make it bottomless at 10am for
endless Prosecco!

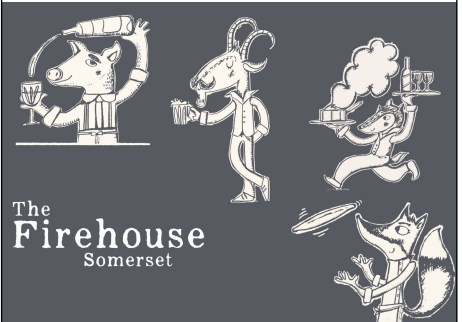
Full Take Away Menu

Available at lunchtime & evening

www.thefirehousesomerset.co.uk

01458 887447

hello@thefirehousesomerset.co.uk



The
Firehouse
Somerset

Driver Training

We specialise in:

- Trailer towing
- LGV & PCV tuition
- Test preparation
- Confidence building

**We have excellent pass
rates due to our
considerable
experience**

01458 250384

07815 121548

info@yeovildrivertraining.co.uk

**Yeovil
Driver Training**
www.yeovildrivertraining.co.uk



Mrs McGregors
CRAFT EMPORIUM

make - do - mend - upcycle

Brunel Shopping Precinct
Somerton TA11 7PY

**NEW AND USED
CRAFT SUPPLIES**

Workshops in
sewing, papercraft,
upcycling and more

07599 025748
mrsmcgregorsemporium@gmail.com

Balancing the protection of our Environment and the Safety of Pedestrians.

Lydia Mason – Clerk, Curry Rivel Parish Council

Whilst gardens might look untidy or unsightly to some, one person's untidy garden can be another's nature reserve.

It is extremely important that we look after our wildlife and 'No Mow May' has been wonderful; it has certainly given me new perspective on how I would like my garden to look in the future. I have personally decided to continue with not mowing the entire lawn and in addition to leaving the grass long and allowing the daisies and buttercups to grow, I am planting my lawn with additional wildflowers and have even grown my own teasels from seed. I cannot wait to see the results, not only for the colour the flowers will bring but for the wildlife they will attract too. I have created a meandering mown path that guides you to most areas around the garden and adding the path has made the lawn look like a feature rather than a mess.

However, it is important to remember when garden growth

overflows onto the pavement it impacts the users of the walkways and pavements, and it is the homeowner's responsibility to ensure their gardens do not cause a nuisance or hazard. Since the pandemic started it is ever more important to keep our boundaries tidy to allow walkers, pushchairs, wheelchairs, and runners safe routes away from the road and traffic. This is especially important for homeowners whose boundaries are on the main roads where the traffic is heavy; no-one wants their arm clipped by a car driving at 30 mph (or faster – speeders you know who you are). Safety aside, it would be fantastic if we all pulled together to enhance the local area for the benefit of everyone. The *Curry Rivel in Bloom* team is doing a fantastic job already and we can further support them by doing our bit too – keep your boundaries tidy!

CRIB always needs more volunteers, please contact Gina on cribsomerset@gmail.com or 01458762296 if you can spare some time.

Curry Rivel & Chevilly



Twinned Communities since 1998

Phone 01460 281905 for more details

Pilates

Mo Masroul Pilates Foundation

Tuesday: Curry Rivel (Primary School)


6.00pm – 7.00pm (All levels)

7.00pm – 8.00pm (Intermediate)

Private sessions 1 to 1 also available

Contact Mo for details on: 07815748518

mospilates@yahoo.com



A C FENCING

FENCING - GATES - SHEDS - REPAIRS
SECURITY FENCING - STOCK FENCING

07470 286765

ac-fencing@outlook.com

Wiltown Garage

Wiltown, Curry Rivel TA10 0JF
Mon-Fri 8am to 6pm
Saturday 8am to 12pm
www.wiltowngarage.com




MOT
Test Centre

- ♦ Batteries
- ♦ Exhausts
- ♦ Clutches
- ♦ Tyres

Vehicle Servicing & Repairs
Air Conditioning Servicing
Breakdown Recovery Service
Car Valeting Inside & Out
Body Repairs & Car Sales

Phone **01458 252 166**
Mobile **07921 788 169**

We can service your **NEW CAR**
and it **WON'T AFFECT**
The Manufacturer's
WARRANTY. Ask
us for details



Taking stock with the WI

Carolyn Paton

The Curry Rivel WI met in May, via Zoom once again, for their AGM. Normal procedures were followed, with a round-up of what has naturally been a most unusual year. Up to 25 members have taken part in virtual meetings, and we have had speakers since September. Anne Geach, President, thanked everyone for taking part in the events as they were able. In their turn, members thanked Anne, not only for her talents as leader, but for the way she has held the group together with regular newsletters and details of interest to the membership.

June saw us gathered around our screens once more to listen to Barbara Spencer-Jones - traveller, award-winning author, lecturer, and blogger. Across the years Barbara has led an enormously varied life in many countries of the world and has sometimes been present at distinctly risky moments of high drama, not to say danger. She was in the West Indies at the time of the Black Power riots, in Greece during the overthrow of the military junta, and in Beirut during the war in Lebanon, escaping bullets on the floor of a taxi! Deciding that discretion was the better part of valour, she returned to the UK with a daughter in tow, and settled to a less dangerous but still varied existence, including teaching, swimming and learning to tap-dance. It was while pool-side that she began to write, needing occupation during her daughter's swimming training.

Beginning with stories for young children, she graduated through fantasy fiction for 8's to 12's, to Somerset-set thrillers for teens and eventually into thrillers for adults – again locally set. Some of her time is now given over to

theWI
INSPIRING WOMEN

school-visits, giving readings of her work and sharing her enthusiasm for books and reading, and to signings in Waterstones. In 2015 she put down her 'pen' only to pick it up again for books with a take on the positive side of life. It was apparent that Barbara will never truly retire...

Anne thanked her before saying goodbye, and the meeting moved on to business matters. The membership present voted unanimously for the resolution to 'Increase awareness of the subtle signs of ovarian cancer'. This had been selected nationally, but required our validation.

Several special activities are projected to be taking place during July and August, including an outing to Hestercombe, a golf-croquet session, and a treasure hunt. This in addition to the on-going meet-ups for walking, reading and crafting which are regular events.

It is hoped that it will be possible to have the July meeting on the Green, and this is due to take place on Monday 5th, linking in with the national day of thanks for all the essential workers who have helped us during the pandemic; not only by caring medically, but by keeping us supplied to our doors with food and other essentials and by taking away our waste. This will take the form of a tea-party at which we will also be celebrating friendship within the WI. No prizes for guessing the menu!

Next year, 2022, is a very important year for Curry Rivel WI. In the October we will have been meeting for 100 years. Planning is underway for some special events and more details will emerge as they are finalised. Members old and new are welcome to any of our events; please get in touch with Anne Geach 01458 253067 for more details.

"BOOTHIE"

General "Handy Man" Services

- **Window Cleaning** with Reach & Wash System
- **Guttering Cleaned & Cleared—Give your gutters that spring clean**
Out of reach guttering no problem using gutter vacuum from ground
- **Grass Cutting; Shed Refelting**
- **UPVC Cleaned & Revitalised—we can restore your Fascias, soffits, door & window frames to look like new**

If the job you need isn't listed, just ask

Call Mike Booth on 01458 251498 or 07872 345623

email: mikeboothie@btinternet.com



Children's Page

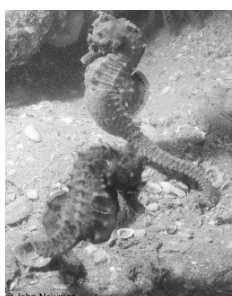
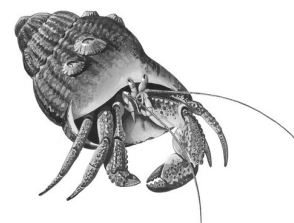
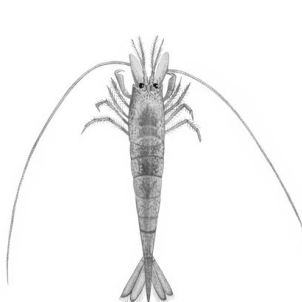


Just For KIDS

The Seaside

Facts about the coast

1. The UK coastline is the longest in Europe, and is over 6,000 km.
2. In the UK, you are always within 70 miles of the beach, it's less than 30 miles from Curry Rivel.
3. British seaside holidays first became popular during the Victorian period (1837-1901). Doctors even used to prescribe trips to the seaside for health reasons!
4. Many Victorian seaside traditions are still popular today. The Victorians invented donkey rides on the beach, deckchairs, ice cream cones, and even fish and chips, which was introduced by Joseph Malin in 1860 .
5. The first seaside resort in Britain was Weymouth in Dorset. Even before the Victorians, King George III began the trend of sunbathing at Weymouth in 1789.
6. There are more than 1,200 species of animals and plants at the British seaside alone.
7. There are many different types of Beach in the UK. From sandy beaches like Weymouth to pebbly beaches like Porlock Weir .
8. The coastline around Dorset is known as the Jurassic Coast due to all the fossils that are found from this era.
9. The UK coast is home to 2 types of Seal, Harbour Seals and Grey Seals. Nearly half of the world's population of Grey seals live around the British coast.
10. There are more than 62 species of crab found in British waters , many of them can be found in rock pools .
11. There are two species of seahorse in UK waters: the Short Snouted and the Spiny .



Children's Page



Just For KIDS

Add some colour to this picture



Please take care of our Woods

Jayne Parsons

It has been reported to Fivehead and Swell Parish Council that young people have been camping out at overnight parties in Swell Wood, causing damage to branches and saplings on private land, as well as leaving litter and soiled paper behind in the RSPB reserve.

We ask that everyone treats this area respectfully and takes home their litter, as we are lucky to have such a beautiful,

ancient woodland within our community.

Also, could parents dropping off their young people please be aware that it is illegal to meet/camp on private land, without the owner's permission?

Thank you

Bow House Physiotherapy Practice

Stacey's Court Car Park
Bow Street
Langport TA10 9PQ
01458 253388

Chartered Physiotherapists

Also available:-
Foot Health and Orthotics, Massage
Therapy, Homeopathy,
Occupational Therapy, Acupuncture,
Bowen, Reflexology, Hopi Ear Candles,
Pilates Classes.

www.bowhousephysiotherapy.co.uk
info@bowhousephysiotherapy.co.uk

Wood Drove Kennels & Cattery

A family run 'home from home' in
Langport for your dogs and cats, with
plenty of space and cuddles!



**Viewings by prior
appointment**

Tue, Fri & Sat at
2pm
01458 250556

www.wooddrovekennelsandcattery.co.uk

Naturally Beautiful Beauty Salon

is based in Curry Rivel offering a wide
variety of treatments including
eyelash extensions, lash lifts, CACI,
radio frequency collagen lift, massage,
facials and waxing.

Reiki and Reflexology are also
available with Debbie.

Call 07903 727 590 or
find us on Facebook



@naturallybeautifulbeautysalon

SEAN MOUNTER

Plumbing & Heating Engineer

**Gas
contracted
installers**



**CTIB
Trained**

For full Gas & Oil Central Heating

**Fully apprentice served
with City & Guilds
qualifications**

**All types of plumbing &
heating installed, Boiler
changes, Heating
upgrades**

**Complete bathroom,
shower rooms
installation incl. tiling,
building work etc.**

No job too small. No VAT. Free competitive quotes and advice

**Tel: 01458 253015
Mob: 07748 183282**

**Herald House,
Langport TA10 9RQ**

Andrew Jones

Your local & fully insured Tree Surgeon

Tree Work

Stump Grinding
Dead Wooding: Thinning
Crown Reduction Raising
Dangerous Trees Removed
Tractor, HIAB & Flail Work

We Supply

Barn Stored Logs
Woodchip for Mulch
Bullrush Compost
Quality Top Soil
Sand & Aggregate
in Dump Bags or
Loose per Tonne

Fencing & Hedges

All Types Supplied, Planted
& Erected

For Hire

Digger-Takeuchi TBO 16
Chipper



Landscaping

Ponds, Patios & Paths
Cultivating, Rotovating & Turfing
Garden & Site Clearance
Stonework, Block & Bricklaying

Call for a Free Quotation

Tel: 01458 252 263 or

Mobile: 07971 532 082



Our Website
curryrivelpriamry.somerset.org.uk

We are open 5 days a week

7.30 a.m. - 6.00 p.m.

From 3 months to 4 year olds

50 weeks a year

Located within

Curry Rivel Primary School

For more details telephone

01458 252822

Letters to Editor

Dear Editor,

Like many locals, I have lived on the Somerset Levels in and around Curry Rivel for most of my life. I have always been rightly proud of our wonderful landscape and environment. As custodians of the land we have a duty to look after the levels for the next generations. So it is with a heavy heart that I found out that Natural England has downgraded the environmental condition of the Somerset levels and moors Sites of Special Scientific Interest (SSSIs) to 'unfavourable declining' due to water quality issues. Phosphates have been found to be three times the acceptable level; this causes biological harm and promotes the growth of algae and duck weed (which lowers the oxygen in the water).

The primary sources of phosphates are from agriculture and the water treatment industry (effluent discharges). Although Natural England has been working with both Wessex Water and local farmers to address the problems, this seems woefully inadequate. However the real blame for this shameful situation has to fall squarely at the feet of our local politicians. It is their inaction over recent years that have allowed this to happen. Indeed in CRNs "District Councillors' Report" back in December touched on this, however our councillors seemed more interested in fighting Natural England (who had put a stop on development) than addressing the problem.

It also begs the question what is the use of our Parliamentary Under Secretary of State at the Department for Environment, Food and Rural Affairs, Rebecca Pow who is the MP for neighbouring Taunton Deane if she cannot or will not get a grip on this.

Yours faithfully,
Name and address supplied



Tincknell Fuels

*Your Local Fuel &
Heating Specialists*

Tincknell Fuels

- ☒ Reliable Fuel Deliveries
- ☒ Automatic Top Up Service



Tincknell Heating

- ☒ Gas/Oil Boiler Maintenance
- ☒ Boiler Installation
- ☒ Oil Tank Installation

01749 683911

www.tincknells.com

01458 259679 / 07779 322130

S R BUILDING

*Brickwork
Plastering—Roofing
Patios—Tiling
Decorating
All General Building Work &
Property Maintenance*

stephen.reddings@live.co.uk

Hamar Fencing & Garden Services



- * Specialist in fencing & gates
- * Patios & decking
- * Hedge trimming & tree work
- * Landscaping
- * Turfing & artificial lawn

07792567318

hamarfencing@yahoo.co.uk
hamarfencing.com



KEVIN PRICE (PREEFENCE LTD)

All types of fencing supplied and installed.

Panel, Closeboard, Post & Rail, Stock fencing & Gates.

Free no obligation quotation or advice

Contact Kevin Price on 01458 251123 or 07968 565939



**AGRICULTURAL
&
EQUESTRIAN**

Letters to Editor ...continued

Dear Editor,

The government has assigned a £3billion to a project referred to as **Bus Back Better** which is a national strategy as a part of recovering from the pandemic. The Prime Minister tells us that this is a part of what 'Levelling Up' means.

The strategy talks of

- Main road services in cities and towns, so often that you don't need a timetable
- Better services at evenings and weekends
- Demand responsive services with smaller vehicles to serve rural villages and out of-town business parks.

And that is just a few examples of improvements.

Somerset County Council is in the process of applying for funds under the scheme.

I am the chair of an interest group - the **Somerset Bus Partnership** to support and encourage the process.

We think this is incredibly important for Somerset. A revitalising force.

We have a presence on Twitter and Facebook and a website at <https://www.somersetbuspartnership.co.uk> and would be delighted to discuss this and/or welcome new members.

Yours,
Tony Reese (Chair)



Dear Editor,

I do think that you need to put the record straight regarding dogs off lead in the countryside. The legal requirement that Julie Rogers quotes (in the May CRN) applies to designated open access land only, not public footpaths. As there is almost no designated open access land near Curry Rivel I feel that she must be referring to dogs off leads on public rights of way where it is not a legal requirement. Of course, all dogs should be kept under control near livestock. but it is simply not the law or necessary in fields with no livestock unless they are "open access land" designated under the CROW act.

Dogs on open access land

You must keep your dog on a lead no more than 2 metres long on open access land:

- between 1 March and 31 July - to protect ground-nesting birds
- at all times around livestock

On land next to the England Coast Path you must keep your dog under close control.

There may be other local or seasonal restrictions. These do not apply to public rights of way or assistance dogs.

The Countryside Code states: "On Open Access land and at the coast, you must put your dog on a lead around livestock. Between 1 March and 31 July, you must have your dog on a lead on Open Access land even if there is no livestock on the land. These are legal requirements."

If you feel threatened or are chased by livestock, then let go of the lead for your own safety. It's usually the dog they see as a threat rather than you and most dogs can easily outrun a cow.

If you are walking across farmland where you can see livestock, or even if you think sheep, cattle, goats or other animals may be nearby, it's really important to put your dog on a lead.

Even if your pet does not usually chase, they may become excited by unusual smells, sounds or movements and it's better to be safe than sorry.

Under the Countryside and Rights of Way Act 2000, on 'access land', dogs must be kept on a lead that's no more than two metres long at all times around livestock.

Yours sincerely,
Paul Parmenter

WARNING

All the below events are subject to cancellation at short notice due to the Corona virus epidemic please contact each group for details.....Keep well, Keep safe

In July Regular Events



.....all postponed until further notice except shown....

MONDAY

9.45 Art Club
3.30 - 5.30 Messy Church (2nd only)
6.00 Pilates
6.45 Explorer Scouts

TUESDAY

10-12 Craft & Coffee (2nd only)
2.30 Forget-Me-Not-Café
5.45 - 8 Pilates
6.00 Cub Pack
6.30 Guides
6.30 Langport Youth Club
7.00 - 9.00 Short Mat Bowls
7.30 Sedgemoor Garden Club (2nd only)
7.30 Tuesday Group (3rd only)

WEDNESDAY

9.30 Mother and Baby Group
7.00 Line Dancing Classes
6.45 Scouts
7.30 Bell Ringing

THURSDAY

10.00 WI
2.00 - 4.00 Short Mat Bowls
4.30 Rainbows
4.30 Brownies
7.30 Parish Council (1st only) via ZOOM

FRIDAY

9.30-2 Get Together Club
7.30 Cinema Night



Deadlines for August Edition

Advertising: 5pm Thursday 8th July
Send to: crn.nigel@outlook.com

Comments & Articles: 5pm Tuesday 13th July
Send to: curryrivelnews@gmail.com

The Curry Rivel News is published monthly by the
Curry Rivel News Group and is delivered free to households within the Parish.

Editor	Jane Hamlin	252946
	curryrivelnews@gmail.com	
Advertising	Nigel Grinsted	07734226000
	crn.nigel@outlook.com	
Treasurer	Rob Atkins	253008
	crntreasurer@yeatesatkins.co.uk	
Publishers	Mike Davis / Richard Wilkins	252554
	crnpub@gmail.com	
Distribution Manager	Hazel Morris	
	hazelmorris200@gmail.com	
Secretary	Natalie Gunter	
	crngsecretary@gmail.com	
Staff Photographer	Mike Mason	252076
Church Pages	John de Ronde	251355
	johnderonde51@hotmail.com	

Some Useful Telephone Numbers

Youth Organisations

Beavers, Cubs, Scouts 01460 281184
Rainbows 01823 698940
Brownies 251953
Guides 252901
Langport Youth Club 0793 899 338

Sports Clubs

Short Mat Bowls Club 251201
Cricket Club 01823 698849 & 01458 252791

Social

Flower Show 250311
Out & About 252146
Royal British Legion 01460 281115
Twinning Association 01460 281905
Women's Institute 259688
Rotary Club of Langport & Somerton 252813
PROBUS 252545
Sedgemoor Garden Club 250091
Heale Lane Allotment Association 741880
Curry Rivel in Bloom 762296
Get Together Club 251524
Health Walks 250725
Mother and Baby 07732 197030
Forget-Me-Not-Café 252710 & 741606
Inner Wheel 251940
Tuesday Group 252657/252022

Arts

Entertainers 250311
Music Club 250863
Dancing Classes 07730 755203
Art Club 253126

Community Facilities

Food Bank (help@curryrivel.org.uk) 0771 6792760
Village Hall (crvhbookings@gmail.com) 741606
Old School Room Bookings (crosrbookings@gmail.com)

250655/253856

United Reformed Church Hall - Bookings etc.

259391

Community Services

Doctors 250464
Police 101
Yarlington Housing 01935 404500
Footpath & Litter Warden johncasebourne@sky.com

Education

Little Pips 252822
Primary School 251404
Huish Episcopi Academy 250501
Huish Episcopi Leisure Centre 251055

Local Authorities

Parish Council (Clerk) curryrivelparish@outlook.com 07714 510828
District Council 0 1935 462462
County Council 0300 123 2224

Religious

Church of England Rector 251375
Churchwarden 259003
Secretary PCC 251355
Organist & Bell Ringing 253856
Flower Guild 252710
Roman Catholic Church, Somerton 274008
URC Minister 252799

Pick up your Prescription from the Post Office

Do you pick up repeat prescriptions from Langport surgery? If so you can request your medicine to be delivered to Curry Rivel Post Office in the BP petrol station. When you reorder, simply ask for delivery to Curry Rivel PO (including reorders on the surgery website). The surgery delivers to the Post Office every Tuesday and Friday. And while you're in the Post Office you can pick up a cappuccino too!

St. Andrew's Church

Find us at: www.curryrivel.org.uk/local-info/churches/st-andrews-church.html and www.achurchnearyou.com/church/11260



We warmly welcome visitors and new members of the community to any of our services and other events.

Covid effects

The recent extension of Covid restrictions means that St. Andrew's Church will continue to be open for private prayer on

Wednesdays to Saturdays from 10.00am - 4.00pm.

'Live' services are planned as listed below, but with the continued use of face masks, sanigel and social distancing. If local Covid conditions develop, short notice changes or suspension of services may be necessary. It is therefore recommended that you check the services listed on the notice board in the churchyard by the Green, in the church porch, on the village website, or on our 'A Church Near You' web page.

July

Sunday 4th

10.00 **FH** - All Age Family Service
10.45 **FH** - Said Communion CW
6.00 pm **CR** - Evening Prayer CW

Thursday 8th

10.00 **CR** - Holy Communion BCP

Sunday 11th

9.30 **SW** - Holy Communion BCP
11.00 **CR** - Parish Communion CW
6.00 pm **FH** - Evening Prayer CW

Sunday 18th

9.30 **FH** - Morning Worship
11.00 **CR** - All Age Family Service
11.45 **CR** - Said Communion CW

Thursday 22nd

10.00 **CR** - Holy Communion BCP

Scott's spot

Rubbish

The way we deal with our rubbish has come a long way. No longer do we simply stuff it into bin bags and expect the refuse collectors to take it away, nor can we take a carload of junk down to the tip and throw it into a giant skip. Most councils today ask us to sort our glass, tins, food and paper, the local tips have now been rebranded as 'recycling centres' and a whole lot of sorting is expected there too. And most recently we've all received the latest local development with the arrival of the 'blue bag'. In Curry Rivel there's a new game in town on Wednesday evenings! All this, of course, is a response to growing environmental awareness as the long-term damage caused by our throwaway society is increasingly recognised. We've come to see that what would once have been dismissed as worthless rubbish can, with a little time and effort, be given a new lease of life.

When we apply this to people, that simple truth takes us to the heart of the gospel. If you've ever doubted your value in the world, if you've been tempted to think of yourself as a bit rubbish, then God's Word brings us hope.



Scott's spot ctd. . . .

In one of his letters to Christians living in a city called Corinth, the Apostle Paul wrote this: *'Consider your own call... not many of you were wise by human standards, not many were powerful, not many were of noble birth.²⁷ But God chose what is foolish in the world to shame the wise; God chose what is weak in the world to shame the strong;²⁸ God chose what is low and despised in the world, things that are not, to reduce to nothing things that are,²⁹ so that no one might boast in the presence of God.'*

Here Paul reminds us that whereas we can write others or even ourselves off as worthless rubbish, God sees us differently. He chooses the seemingly foolish, weak and despised of this world, those considered rubbish in the eyes of many, as people through whom great things are possible. The world around us rates things like power, wealth, good looks or a large social media following, as indicators of worth, but not so with God. In Corinth many were despised as of little worth, as rubbish, but in God's eyes, said Paul, they were infinitely precious, special to him. The wonderful news of the Christian gospel is that that's true for us all. How do we know we're all of infinite value to God? Well through the astonishing message that in Jesus, God chose to face the cross for us. Despite what the world may seem to say about you, you need look no further than Christ on the cross to know that in God's eyes you are of infinite worth.

God's ways are different. He sees not simply what we are but what we can be, and through Christ he gave his all, to make the latter possible. God is not in the business of throwing away – no one is rubbish to Him. In fact in many ways His goal for everyone far exceeds mere recycling, and could be better understood as 'ultimate up-cycling'.

With prayer for you and those you love this summer and beyond,

Rev. Scott



St. Andrew's Rotas July

Brass - Sue Randell

Flowers

2nd - Sandra Hill
9th - Adrienne Holmes
16th - 'Fete'
23rd & 30th - Diana Talbot-Williams

Cleaning

2nd - Nicky Barker
9th - Liz Rendell
16th - Lynne Comley
23rd - Tina Geary
30th - Wendy Graves



July ctd . . .

Sunday 25th

9.30 **FH** - Parish Communion CW
11.00 **CR** - Morning Worship
6.00 pm **SW** - BCP Evensong or Evening Prayer (t.b.c.)

CR = St. Andrew's Church, Curry Rivel

FH = St. Martin's Church, Fivehead

SW = St. Catherine's Church, Swell

St Andrew's Fete 17th July***CANCELLED***

With great sadness, following the Government's extension of Covid restrictions to 19th July, the Fete Committee has decided to cancel this year's fete.

RAFFLE REMAINS

However, we will still be drawing the raffle on 17th July, on the Green.

1st Prize £100, 2nd Prize Luxury Hamper, 3rd Prize MOT and more!! Tickets available from the Post Office, The Firehouse, church members and fete helpers on the 17th.

ALTERNATIVE EVENT

The fete Committee is working on an 'alternative event' for us all to enjoy, while remaining safe and still supporting the work and upkeep of St. Andrew's church. Details to come through your letterbox!

Just for fun!**Notices found in church newsletters - that didn't quite come out right!**

Ladies are requested not to have children in the church kitchen.

For those who have children and don't know it, we have a crèche in the crypt.

Bring and share church supper.

Prayer and medication will follow.

From the Parish Pump

From St. Andrew's Registers**Weddings**

We wish them God's blessing at the start of married life

22nd May Sarah Jane Smith and Jamie Jones

5th June - Suzanna Graves and Hugh Alder

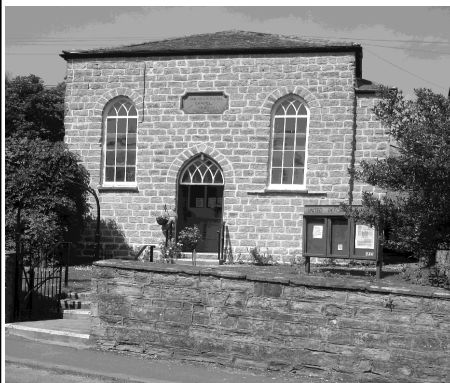
Funerals

May God grant them eternal rest.

15th May - Service of Thanksgiving for the life of Josephine Fetherston-Godley († 29th April)

20th May - Service to celebrate the life of David Lindsay Mills († 24th April) and burial in St. Andrew's Churchyard

8th June - Memorial Service at Taunton Crematorium of Pat Stevens and interment in St. Andrew's Churchyard
9th June

United Reformed Church**July**

**Services start at 10.30 am.
They will be taking place in our
Chapel building and
simultaneously live via Zoom.**

Anyone unable to attend in person who would like to feel part of a worshipping community is invited to join us - from any denomination or none; simply email Steve Beney on stevebeney@yahoo.co.uk expressing your interest and he will contact you explaining how to join us on Sundays @ 10.30 am.

Sunday 4th - Mrs Alison Reed Richards

Sunday 11th - Rev Evelyn Ridout

Sunday 18th - Rev Tim Richards

Sunday 25th - via Zoom Rev Tim Richards

Sunday 1st August - Witness Box

We are an inclusive, outward looking group of people and we welcome all: wherever you are on your life/spiritual journey we welcome you without regard to age, gender, denominational background, sexual orientation, race or ability. We respect the traditions of our past, engage with present and look forward to the future, believing that Christian truth is not contained in static propositional statements but is ever changing and constantly evolving. Tea/coffee is served after every service providing the opportunity to meet and chat with each other and the preacher.

**Minister: Rev. Tim Richards
01458 252799**

**Legacy**

Some readers may be aware that Curry Rivel United Reformed Church shares Rev Tim with 4 other URC congregations – we belong to the Mid-Somerset Group of United Reformed Churches stretching from Glastonbury to Curry Rivel with Street, Somerton, Langport in between.

There have been myriad consequences of the global health pandemic; globally, nationally, locally, publicly & privately – some regarded positively, some negatively & some with a cautious 'let's see how it pans out' attitude. One of the consequences for the Mid-Somerset Group is the decision of our Langport Church not to re-open; 5 becomes 4. Whilst there is an air of sadness & feeling of loss I have been drawn to think about Legacy – that which continues on after someone, something has ceased to exist.

We often speak of the legacy of individuals at their dying, expressed in obituaries, eulogies, condolence cards, words of comfort, public statements of commitment to their cause – it can be one way of keeping memories alive. Langport URC's Legacy is something for a different magazine but I am left wondering what our/my legacy will be - nationally, locally, publicly, privately, societal & individual - in the light of the challenges & opportunities of the last 18 months? What have been the consequences & which of those are worth celebrating - talking about- & which are worth keeping – bequeathing? How do we engage with Kingdom living right here, right now? In ways which benefit on a global & local, societal & individual scale – what is, will be our Legacy?

Forsey and Son

ESTABLISHED 1946
INDEPENDENT FAMILY FUNERAL DIRECTORS
MEMORIAL MASONS • PRE PAYMENT PLANS

Pound Pool, Somerton, Somerset TA11 6LZ
Telephone 01458 272297 or Langport 01458 250509

28 High Street, Butleigh, Glastonbury, Somerset BA6 8SY
Telephone 01458 850654

Willowfields, Lowsides Lane, Glastonbury, Somerset BA6 9GY
Telephone 01458 831020



www.forseyandson.co.uk



Curry Woods Conservation Trust

Peter Goodenough

Gods, DNA, moths and orchids

When planting trees Romans would put their trust in the appropriate deity. In our case it would have been Silvanus - as protector of the forest (Sylvestris deus), he especially presided over plantations and delighted in trees growing wild. One of our trustees (Sylvia) - spot the clue here - was given that name by her plant-loving parents after the Roman tree protector. I am sure her parents would have been happy to see that she has lived up to their hopes (well, on the tree planting front anyway)

The Romans' new tree planting was "in the lap of the gods" meaning they could not control the weather conditions and just had to plant and pray. In contrast, on the Conservation Trust land we planted and built a water collection system. The picture shows the two phases of our water collection device. Most of this was the design and fabrication of Alan. Many thanks and appreciation go to him for his engineering skills. As April was so dry, we were thinking of other ways to fill the water tanks when Silvanus intervened (not really of course) and



Water capture system -phase 1



Pyramidal orchid

we had a gloriously wet May. This was just due to the randomness of weather but wow, are we grateful. As well as the trees being well watered, we have now collected 600 litres of rain water. Happy Trustees all round.

In 2018 a group of French scientists sequenced the genome of the oak tree (*Quercus robur*) - apologies for lots of Latin this month. There was much interesting stuff in their article but the bit that might interest us was the finding that oaks collect lots of mutations in their DNA over their long life. You would have heard endlessly about mutations recently and how viruses mutate quickly and by so doing might evade the vaccines recently produced by the brilliant Sarah Gilbert and Andrew Pollard in Oxford. Well, now we know that oaks do the same throughout their cells, mainly in response to attack from insects and fungi. They are much better than humans in passing on these mutations to their seeds. We only pass on mutations occurring in the egg and sperm cells, oaks can pass on mutations

occurring in any cells (called somatic mutations by scientists). Thus the Curry Woods oaks develop mutations to help fight local pathogens and these get fixed into the seeds that are distributed as acorns. Consequently, a strain of oak develops that is a Curry Woods specific oak. How about that for ingenuity!



Cream Spot Tiger Moth underside

Then on 6th June a picture of a Cream Spot Tiger Moth was taken on the field. I have never seen this moth before. I have seen the Jersey Tiger Moth in the area but not a Cream Spot. They have wonderful colouring and fly between late April and September; only occasionally by day. Their caterpillars are very hairy and feed on a variety of plants, so you may see hairy caterpillars on the field. Do watch out for them and be careful not to tread on them. A common blue butterfly was also recorded at the same time. And finally on June 8th I spotted three pyramidal orchids! They, and many other wild flowers, are wasting no time in making the field their home!

Royal British Legion Centenary

Pip Brett

The Curry Rivel, Drayton and Fivehead Branch of the Royal British Legion celebrated the Legion's 100th Anniversary with a wreath-laying ceremony at 9am on Saturday 15th May 2021. The wreath was laid by the longest serving member and Branch President, General Sir John Learmont.

Our local branch actually predates the RBL having been founded in 1918, and so it was instrumental in setting up the Legion as we know it today. The Branch Chairman, Mick Brett, said, "We are

looking forward to restarting our fund-raising events and activities as soon as we can and, hopefully, welcoming new members to the Branch. We are a friendly group of ex-service men and women, and those who want to support our veterans."

Please contact Pip Brett
(pipbrett@me.com)

Tel: 01460 281 115 for more details.

