



Curry Woods Conservation Trust

Peter Goodenough

The moors and levels are in the news again and yes, it's to do with water management. A project funded by the EU and with participants from the UK, France, Belgium and Holland is planning how we should adapt to climate change. Curiously Somerset's wetlands are being impacted by two events. Firstly, all those glaciers that covered the land north of where the Severn and Thames are now not only sculpted the land but acted as a huge force on the land mass. Northern areas had the highest weight of ice and southern areas relatively little. So the land pivoted, sinking in the north and rising in the south. However, as the glaciers melted and finally vanished, about 8-10,000 years ago, a rebalancing started and the north started to rise while the south sank. At the same time sea levels rose and cut off Britain from the European land mass. This was only really fully understood in the 1960s when the science of plate tectonics was born and explained why earthquakes etc. happen. Unhappily both of these effects are ongoing and the increased global temperature is melting glaciers

around the world at an increasing rate. Britain is pivoting around an area roughly east/west from North Wales. So where does this leave Somerset? A meeting on the 29th February in the Ridgway Hall in Langport will showcase the science and explain how climate adaptation pathways are being built. It will also show some of the work of the Hills to Levels project in planting trees to slow down water flows to the levels. The urgency of this project and the identification of the moors to the south and west of Langport as being at special risk mean that, even with the most conservative estimates of sea rise and land sinkage during the 21st century, these areas are going to flood, eventually for ever unless drastic cuts are made to the release by humans of greenhouse gases. The climate adaptation pathways are going to be concrete plans for preventative measures as each trigger point in sea rise and land sinkage is reached. Real plans will be made as to how and where to raise the river and sea defences at the initial stages of the changes, build river barriers at the mouths of the Parrett etc. at a later stage and to relocate communities at the stage where some areas can no longer be defended. These plans will overlap. Obviously plans like ours to buy land, plant trees and keep as much water on the hills as possible will slow down the need to implement these plans. If all the catchment area of the Parrett, Isle and Yeo was forest it would

be a long time before the adaptation plans would be needed but that is obviously impracticable! However, the less building and intensive agriculture and more trees that we can plant the slower the change. It is sobering to hear that the first community in Britain, Fairbourne in North Wales, has been told it can no longer be protected from sea level rise and the community must relocate- let's hope that doesn't happen to Somerset communities this century. If it is not to happen though, we must come together to help.



So the time is now to support the Curry Woods initiative. Come along to a meeting on the 15th February to pledge your support and make donations to buy Curry Woods. This is a cause right on your doorstep, it will protect the School from further flooding and start our own Parish Climate Adaptation Pathway. Please help us now. There will be two presentations about the Trust, one at three o'clock and one at six o'clock in the Old Schoolroom which will be open from 2-9pm that day to allow you to drop in, chat and hopefully pledge a donation.



LANGPORT & DISTRICT HISTORY SOCIETY TALK REPORT

Outside the garden: archaeology around Stourhead

Janet Seaton

The Society's first meeting of the new decade featured an illustrated talk from industrial archaeologist Dr Peter Stanier, who took us on a fascinating tour of the landscape features around the outside of the gardens of Stourhead in Wiltshire.

Everyone in the audience had visited Stourhead, but few had explored the wealth of archaeological remains in the surrounding countryside. With the aid of detailed maps and clear photographs, Peter explained the history and functions of everything from Neolithic settlements to pumps, dams and King Alfred's Tower.

He began with a brief history of the ownership of the estate, which extends to over 2,000 acres and is now in the care of the National Trust. The banking family of Hoare took over a medieval house which had a deer park and fish ponds, and set about building a new house and improving the landscape on a grand scale.

His tour took in an iron bridge dating from 1860, a cascade reputedly copied from one at Hestercombe, and water wheels and pumps relating to the many lakes and ponds that now exist. Peter showed how the views from within the garden extend to the wider landscape, thus 'borrowing' the area around and making the gardens seem even more extensive. Like many estates of a similar vintage, Stourhead also has an obelisk, an ice house and a ha-ha, in addition to the more familiar structures near the house such as the

Pantheon and the grotto.

We also learned about the archaeological digs carried out in the early 19th century by Sir Richard Colt Hoare on Whitesheet Hill, where many ancient features and monuments are marked on the Ordnance Survey maps. Aerial photographs showed their positions more clearly than they can often be seen from ground level.

Peter's talk not only showed us how to understand some of the landscape features we might find, but how easy it is to explore walks and areas of the countryside that are only just off the beaten track. Sadly, this was Peter's last public talk. He has featured in our talks programme every year for the last 10 years, and we will miss his insights into our industrial heritage.

The Society's next meeting will be on 3 February at the Sixth Form Auditorium, Huish Episcopi Academy, when Sonja Rogers will be talking about *The National Trust collections in their Somerset houses*. Refreshments will be available in the cafeteria from 6.45pm. Non-members are very welcome, £4 per person.

Anyone interested in joining the History Society should contact Sue Standen:

01458 273471, suzannestanden471@btinternet.com.

Follow the History Society at @langporthistory, and:

<https://sites.google.com/site/langporthheritage/home>.

SOMERTON U3A

Kay Williamson

If you have just moved to the area, or would like to learn a new skill and make new friends at the same time, Somerton U3A might be for you. With over 500 members and 50 interest groups, membership is open to all those no longer in full time work.

If you would like to know more why not come to our next monthly meeting at the Edgar Hall, Somerton, Friday 28th

February at 10.00 am to 12 noon for a coffee and a chat where you will be given a very warm welcome.

Coffee is followed by a talk from a guest speaker. This month it will be Richard Grundy who will be talking about Tristan da Cunha, its wildlife, history and the way of life of its people.

Alternatively, phone Kay on 01458 448694 for more information about Somerton U3A.



Your Community Website
curryrivel.org.uk



District Councillor's Report

Tiffany Osborne and Clare Paul

The future of local government in Somerset is currently being discussed between the District Councils and the County Council. The five Councils have been working together to explore the best approaches to address the challenges we face across Somerset. The conclusions are that change needs to happen. No change is not an option. Therefore, the only real question is what changes we need to make and when. There are five main areas of focus which are: disadvantaged children, young people, older people, the economy and the environment. Within these areas the focus is around a growing and ageing population, supporting more struggling families, not enough affordable housing, lack of employment with young people leaving the County, environmental targets and investing in digital technologies.

The imperative is to create something better for Somerset. Not just a cheaper option but something that delivers better community outcomes and financially sustainable services. Options are to have a more integrative and collaborative approach amongst the councils, to form one new council, to form two new councils either North/South or East/West or to have three new councils.

The District Councils' Leaders have agreed the best option is a deeper collaboration between all councils. This would include integrating strategies – perhaps one strategic approach for all

of Somerset – as well as integrating services/management and leadership, joined up commissioning and procurement and introducing one customer service portal for all the county. The County Council preferred option is to explore one new council.

SSDC's next step will be to seek approval and decision to develop a business case for their preferred option. This will take place in February.

Following on from the more integrative and collaborative approach favoured by the District Councils a series of drop-in events are being held to give people the opportunity to get involved and find out how the councils in Somerset are working together on their approach to the climate emergency and how they aim to reduce carbon emissions by 2030.

The events will be held on Saturdays between 10am and 4pm at the Council Offices in their respective districts:

8 February in Bridgwater, 15 February in Shepton Mallet and 22 February in Yeovil. You can also complete an online survey:

<https://www.surveymonkey.co.uk/r/Somerset-Climate-Change-Survey-2019> or for under 18's

www.surveymonkey.co.uk/r/Somerset-Climate-Change-Survey-2019-Young-People.

SEAN MOUNTER

Plumbing & Heating Engineer



**CTIB
Trained**

**Gas
contracted
installers**

For full Gas & Oil Central Heating

**Fully apprentice served
with City & Guilds
qualifications**

**All types of plumbing &
heating installed, Boiler
changes, Heating
upgrades**

**Complete bathroom,
shower rooms
installation incl. tiling,
building work etc.**

No job too small. No VAT. Free competitive quotes and advice

**Tel: 01458 253015
Mob: 07748 183282**

**Herald House,
Langport TA10 9RQ**



Our Website
curryrivelpriamary.somerset.org.uk

We are open 5 days a week

7.30 a.m. - 6.00 p.m.

From 3 months to 4 year olds

50 weeks a year

Located within

Curry Rivel Primary School

For more details telephone

01458 252822

KEVIN PRICE (PREEFENCE LTD)

All types of fencing supplied and installed.
Panel, Closeboard, Post & Rail, Stock fencing
& Gates.

All types of Landscaping, Patios & Garden



**AGRICULTURAL
&
EQUESTRIAN**

Free no obligation quotation or advice

Contact Kevin Price on 01458 251123 or 07968

Parish Council News

Tony Greenaway

The Parish Council meeting was held on 9th January 2020; here follows a short summary of the key points discussed and actions agreed:

1. The Council accepted the transfer of a piece of land adjacent to Granny's Garden so that a small retaining wall can be built there for Curry Rivel in Bloom to make some further improvements.
2. Residents have questioned the ownership of the land occupied by the bus shelter near Chatham Place. This will be investigated and reported on a future date.
3. The Council is still considering the terms on which a piece of land east of Linton House can be transferred from the land owner to the council in order to turn into an outdoor public place for the benefit of the whole community.
4. Investigations are continuing into a vehicle speed and safety strategy. This is being headed up by Councillor Simon Scarborough
5. A litter pick is being planned to coincide with 'Keep Britain Tidy' campaign which runs from 20 March until 13 April. Watch the website, Sewers Hall display and Curry Rivel News for more information.
6. The precept for the financial year 2020/2021 was discussed and agreed.

Draft minutes from the meeting will be published in due course.

The next meeting of the Parish Council will be on Thursday 6th February at the usual time of 7.30 pm in the Chatham Room of the Sewers Hall. Residents are warmly invited to attend.

The views expressed in Curry Rivel News are those of the contributors and not those of the publisher. Whilst every effort has been taken to ensure the information supplied for inclusion in the publication is accurate, responsibility cannot be accepted for any omissions or inaccurate information. We reserve the right to edit any contribution for the purpose of clarity, consistency and layout limitations. By supplying material for publication, you are giving consent for its publication on the village community website.

Hamar Fencing & Garden Services



- * Specialist in fencing & gates
- * Patios & decking

- * Hedge trimming & tree work
- * Landscaping
- * Turfing & artificial lawn

07792567318

hamarfencing@yahoo.co.uk
hamarfencing.com



Langport



- CARPETS & VINYL
- WOOD & LVT
- BLINDS & SHUTTERS
- DOMESTIC & COMMERCIAL



THE OLD POST OFFICE,
38 NORTH STREET,
LANGPORT,
TA10 9RH

T: 01458 887301 E: langport@sjhcarpets.co.uk W: www.sjhcarpets.co.uk
MONDAY-FRIDAY: 9-5 SATURDAY: 9-1

Also at Tythings Commercial Centre, Wincanton & High Street, Tisbury

Sedgemoor Gardens Club

Sylvia Goodenough

At the time of writing Sedgemoor Gardens Club members are looking forward to hearing a talk by Katherine Crouch on "New tricks for old gardeners" on Tuesday 14th January, though the current high winds and incessant rain may deter a few from turning out! It has hardly been gardening weather in January so far, though there are tell-tale signs that Spring is not too far away in the snowdrops and early daffs that are already around.



Looking back, members thoroughly enjoyed an excellent buffet supper and quiz in December. The quiz stirred the little grey cells and the buffet more than satisfied the tums!

Going forward, in February we meet as usual on the second Tuesday evening, the 11th, at 7.30pm in All Saints Hall, Langport when our speaker will be James Feaver, talking on "the magic of mushrooms". This should be a very interesting talk, and new members / visitors are very welcome to join us for that evening. If you would like further details about the club please ring 01458 250091 or visit our website at sedgemoorgardens.simplesite.com.

Please also put a reminder in your diary that our Daffodil Festival in Long Sutton Village Hall will be on Saturday, March 21st. This is always a spectacular event - not to be missed!



Bow House Physiotherapy Practice
 Stacey's Court Car Park
 Bow Street
 Langport TA10 9PQ
 01458 253388

Chartered Physiotherapists

Also available:-
 Foot Health and Orthotics, Massage
 Therapy, Homeopathy, Occupational
 Therapy, Acupuncture, Bowen,
 Reflexology, Hopi Ear Candles, Pilates
 Classes.

www.bowhousephysiotherapy.co.uk
info@bowhousephysiotherapy.co.uk

Trees & Hedges
 Dry-Stone Walls & Features
 (DSWA Professionals)
 Lime Mortar Walls & Pointing Gardening &
 Landscaping
 Fencing

Telephone 01458 250 819
 or 07986 545 064

Sticks & Stones
 Emrys Evans & Denise Evans

Forsey and Son
 ESTABLISHED 1946
 INDEPENDENT FAMILY FUNERAL DIRECTORS
 MEMORIAL MASONS • PRE PAYMENT PLANS

Pound Pool, Somerton, Somerset TA11 6LZ
 Telephone 01458 272297 or Langport 01458 250509

28 High Street, Butleigh, Glastonbury, Somerset BA6 8SY
 Telephone 01458 850654

Willowfields, Lowerside Lane, Glastonbury, Somerset BA6 9GY
 Telephone 01458 831020

www.forseyandson.co.uk

Painter & Decorator
01458 250005

Free Estimates

John Monaghan

"BOOTHIE" General "Handy Man" Services

- **Window Cleaning** with Reach & Wash System
- **Guttering Cleaned & Cleared**—Give your gutters that spring clean
 Out of reach guttering no problem using gutter vacuum from ground
- **Grass Cutting; Shed Refelting**
- **UPVC Cleaned & Revitalised**—we can restore your
 Fascias, soffits, door & window frames to look like new

If the job you need isn't listed, just ask
 Call Mike Booth on 01458 251498 or 07872 345623
 email: mikeboothie@btinternet.com

Forget Me Not Café Funds

Robert Crowley - Secretary of the URC

On Tuesday 7th January 2020, I presented a cheque for £179.08 to Adrienne Holmes of the Forget Me Not Cafe on behalf of the United Reformed Church (URC) in Curry Rivel. The money was raised at a Candlelit Carol Service on 22nd December last at the Langport URC, organised by members of the Curry Rivel Chapel. We are very glad that these funds will enable the Forget Me Not Cafe to continue providing facilities and activities for individuals in this area.



01458 259679 / 07779 322130

S R BUILDING

Brickwork
Plastering—Roofing
Patios—Tiling
Decorating
All General Building Work &
Property Maintenance

stephen.reddings@live.co.uk

A C FENCING

FENCING - GATES - SHEDS - REPAIRS
 SECURITY FENCING - STOCK FENCING

07470 286765

ac-fencing@outlook.com



Affordable Private Dentures
 New dentures.
 Dentures on implants.
 Relines (to improve fit).
 Repairs (same day service).
 PPE II custom made sports mouth guards for children and adults.



The centre is supported by an on-site laboratory with a professional team of dental technicians
Dental Design Limited
 81 Bow Street Langport
 E-mail: receptionist@bdc-langport.co.uk
 Website: www.bowdentalcentre.co.uk
Telephone: 01458 253 888

Wood Drove Kennels & Cattery

A family run 'home from home' in Langport for your dogs and cats, with plenty of space and cuddles!



Viewings by prior appointment

Tue, Fri & Sat at 2pm
01458 250556

www.wooddrovekennelsandcattery.co.uk

Big Boost for 'Forget Me Not' Café

Roger Hampton

The 'Forget Me Not' Café has recently received a big boost by receiving £750 from the Somerset County Council 'Improving Lives' scheme.

A big thank you to Clare Paul (County Councillor for Curry Rivel and Langport) and Andy Anderson (Chairman Curry Rivel Parish Council) for all their support to get this grant.

The photo shows the 'Forget Me Not' Café team receiving the cheque from Clare and Andy at the Christmas Party.

The 'Forget Me Not' Café is at Curry Rivel Village Hall every Tuesday afternoon from 2.30pm till 4.30pm, and is a great place to make friends, especially for those with memory challenges.



Wiltown Garage

Wiltown, Curry Rivel TA10 0JF
Mon-Fri 8am to 6pm
Saturday 8am to 12pm
www.wiltowngarage.com



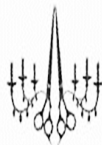
MOT
Test Centre

- ◆ Batteries
- ◆ Exhausts
- ◆ Clutches
- ◆ Tyres

Vehicle Servicing & Repairs
Air Conditioning Servicing
Breakdown Recovery Service
Car Valeting Inside & Out
Body Repairs & Car Sales

Phone **01458 252 166**
Mobile **07921 788 169**

We can service your **NEW CAR**
and it **WON'T AFFECT**
The Manufacturer's
WARRANTY. Ask
us for details



NEW SALON Lawrence House Hair Boutique Curry Rivel, Langport

£10 off

Your 1st Colour and receive a free Cut and Blowdry

Or

£5 off

Ladies Cut and Blowdry

Please bring this advert with you on the day of your appointment

To make an appointment, please give us a call or come in and visit the salon,
Late night appointments available

OPENING TIMES

Monday, Tuesday, Wednesday: 9.30am—2.30pm **Thursday:** 9.30am—8.00pm

Friday: 9.30am - 6.30pm **Saturday:** By Appointment **Sunday:** Closed

01458 252395

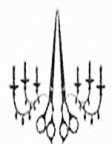
The High Street,
Curry Rivel,
TA10 0EY



Find us on Facebook



Follow us on @LHStyling



Ever thought about volunteering?

Helen Breeze

With busy lives, it can be hard to find time to volunteer however, the benefits can be as great for the volunteer as for the community. It can help you to find friends, connect with local village life, learn new skills, and even advance your career. But above all it makes you feel good.

Giving your time to improve your local community can also help protect your mental and physical health and provide a sense of purpose. It doesn't have to take a huge amount of time out of your busy week and there is clear evidence of the advantages. Many hands make light work, so the more volunteers we have, the less time it takes to achieve the goal, be it a website, flowers for the church, gardens or a local newspaper.

5 benefits of volunteering

1. Nourish your mind, body and spirit
2. Feel valued
3. Fulfill a need to give something back
4. Feel good about sharing your skills
5. Learn new skills from others



Volunteering as a family

Children watch everything we do. By giving back to the community, you'll show them first-hand how volunteering makes a difference and how good it feels to help other people. It's also a valuable way for you to get to know organizations in the community and find resources and activities for your children and family.

Bear in mind that the most valuable assets you can bring to any volunteer effort are compassion, an open mind, a willingness to pitch in wherever needed, and a positive attitude.

There are plenty of opportunities within Curry Rivel – take a look at the back page where the telephone numbers of most of the local groups are listed: go on, give it a try; you will be welcomed with open arms, and you never know, it might be one of the best things you ever did!

Curry Rivel Website Opportunity

The Curry Rivel Community Website is run by volunteers and is looking for a keen person with good basic IT skills and an appetite to learn to work with the existing team to develop the site.

Training will be provided on the job and the time commitment will be as much as you want but we estimate a minimum of 3 hours a week.

This opportunity is open to anyone regardless of their age. Enquiries to Tony Greenaway by email in the first instance tgreenaway51@gmail.com

Curry Rivel News Group Grants

The Curry Rivel News Group are pleased to be able to provide small grants to support local groups and their activities. Funds are provided from the sales of the successful book 'Curry Rivel Past and Present'. To apply for a grant please email crng2019@gmail.com



The Busiest Big Breakfast

Roger Hampton

The Christmas Big Breakfast was one of the busiest yet and was a great success.

The kitchen team never stopped all morning, and cooked.....

- *149 individual breakfasts
- *160 fried eggs
- *180 sausages
- *200 rashers of bacon

A big thank you to 'Black Sheep' butchers for sponsoring the Big Breakfast.

Santa also came along, sparing time from his busy schedule, and was greatly enjoyed by the boys and girls.

This great Community event, is now attracting many new Curry Rivel villagers, and also those from surrounding villages.



PRIME PLUMBING

- Qualified to provide plumbing and related electrical services.
- Specialist in kitchen and bathroom planning and installation.
- Tiling, plastering and flooring work undertaken.
- Will also investigate and repair plumbing and related electrical problems.
- Advice and estimates provided free of charge.
- No VAT charges.

For any work required, please contact
Richard Ovenden, Prime Plumbing

on 07800 543795 or e mail: prime.plumbing@btinternet.com



PLUMBING & HEATING

OIL, GAS & LPG SERVICING, REPAIRS & INSTALLATIONS
FATHER & SON REGISTERED BUSINESS
RELIABLE, PROFESSIONAL & FRIENDLY SERVICE
OUR CUSTOMER PEACE OF MIND IS OUR
SATISFACTION

T. 01458 259453 / 01460 200707

M. 07956 345878

E. info@crheating.co.uk

www.crheating.co.uk



Glow-worm
The energy you need



Andrew Jones Your local & fully insured Tree Surgeon

Tree Work

Stump Grinding
Dead Wooding: Thinning
Crown Reduction & Raising
Dangerous Trees Removed
Tractor, HIAB & Flail Work

We Supply

Barn Stored Logs
Woodchip for Mulch
Bullrush Compost
Quality Top Soil
Sand & Aggregate
in Dump Bags or
Loose per Tonne

Fencing & Hedges

All Types Supplied, Planted
& Erected

For Hire

Digger-Takeuchi TBO 16
Chipper

Landscaping

Ponds, Patios & Paths
Cultivating, Rotovating & Turfing
Garden & Site Clearance
Stonework, Block & Bricklaying

Call for a Free Quotation

Tel: 01458 252 263 or

Mobile: 07971 532 082



Pilates

Mo Masrour Pilates Foundation

Tuesday: Curry Rivel (Primary School)

6.00pm – 7.00pm (All levels)

7.00pm – 8.00pm (Intermediate)

Private sessions 1 to 1 also available

Contact Mo for details on: 07815748518

mospilates@yahoo.com



We're local, we're friendly and we're here to help. We stock a wide variety of meats including Game, Homemade pies, pasties, scotch eggs and faggots. And a wide selection of local cheeses and local seasonal veg.

6 Parrett Close, Langport, TA10 9PG

Tel: 01458 250778

Mon-Fri 7am—5pm

Sat 7am—4pm



Gina Beauchamp

CRiB is quite quiet during the winter months but we hope you have enjoyed the winter planting on the railings and the war memorial still looks quite good ! There will be daffodils blooming soon in all our pots to cheer us through to the spring.



Volunteers Needed

One job that needs doing very soon, as soon as it is dry, is to treat the willow fence behind the War Memorial Garden. Any volunteers would be very welcome. Contact Gina on 01458 762296

Plant Sales

We plan to hold our plant sales again this year and the first one will be Saturday 28th March at the war memorial at 10.30 am. It will be a bring and buy theme and there will be tea, coffee and cake available, as well as plants and pots and, empty hanging baskets for sale. Very popular last year, please come along to meet us and have a chat, and do a bit of weeding or pruning while you are there !

In Bloom It's Your Neighbourhood

If you are part of a street or area in Curry Rivel that has a lot of nice front gardens or veggie patches or you have worked together to improve your neighbourhood, why not get together and become an It's Your Neighbourhood group. You will get to meet the judges on Judging day in July and receive a certificate at the October South West in Bloom awards. For more details, contact Gina on the above number.

Front garden Competition

This will take place again this year and is usually judged during the last two weeks of June .There will be more details in future months, no particular colour scheme but the judges will always be looking for an element of recycling and water saving .

Jobs to do in the garden in February.

- It is still not too late to winter prune fruit trees
- Wisteria should be cut back to just a few buds to promote plenty of growth
- Grape vines can be pruned now while dormant
- Cover rhubarb to protect new shoots and encourage growth
- Ornamental grasses can be cut back now
- In the greenhouse, start sowing seeds if warm enough

Learn and Practise Life Saving Skills

Chris Cox

As the advertised January course is now full I am running a second general first aid training session on Sunday 23rd February from 9am to 1pm at Langport Red Cross Centre. Open to all, the course is entirely practical and will teach and give practice in the basic skills necessary to preserve life and stabilise casualties until the professionals arrive. Topics will include cardiac arrest, heart attacks,

strokes, severe bleeds, choking, allergic reactions, asthma, diabetes, fractures and other topics if requested. The cost is £35 which will be a donation to Langport & District Red Cross Group. Places are limited.

Chris Cox. Book on 01458 273085 or e-mail cox.cj@btinternet.com.

Tres chic at the WI...

Carolyn Paton

This being the first WI meeting of 2020, the treasurer was at the receipt of custom for subs, and there were the usual reports on recent events, together with pointers towards future activities – both imminent and further ahead. Diaries at the ready! The vote of our Institute was revealed to be an 'end to modern slavery', and this will go towards a decision by the National Federation, which each year champions a cause chosen by members. Mention was made of the forthcoming Centenary Year of the Curry Rivel Institute, and members were encouraged to note down any recollection they or others may have of the WI in the village. At the end of the meeting, the winner of the sum of competitions across the previous year proved to be Angela Cole, who received the annually awarded cup from the President, Anne Geach.

For information on WI-related matters, contact Anne on 01458 253078

Our visiting speaker was Jill Venn of Tip Top Hats, a hat agency. Jill regaled us with a brief history of hat wearing, from an early function of protection from the elements, through to today's safety helmets.

Once again, we became privy to some little-known facts from the past. Who knew that before 1914, feathers for hat-making were so prized that they ranked fourth in value after gold, diamonds and wool? Extraordinary. And the origin of the term 'millinery' relates to the fact that many of the items necessary for the manufacture of hats came from Milan. News to many of us.

Eight pre-warned and suitably attired volunteers were called forward to model a selection of hats. Various styles were fitted on to suit both the outfit being worn and the person wearing it, and the models bravely displayed their new headgear. Fit for a day at the races, a wedding, a garden party or even an investiture!



Anyone who wished could try out their chosen favourite regardless of how 'dressed up' they were, though in the end, time put a stop to the fun. All in all, a tonic for a January day. Thank you to Jill Venn and those courageous WI members who took part.

Thank You from Chatham Place

Sue Walsh

Roy Webb decorated his house in Chatham Place with Christmas Lights and raised £254.01 for the Dorset and Somerset Air Ambulance and we would like to thank everyone for their kind donations and support.



WANTED

Langport based collector seeks railway relics to include enamel and cast iron signs, lamps, signalling equipment, loco name and plates, posters—anything considered.

Call David on 07766 635989 or email dgasa@tiscali.co.uk

KOMIT KOMPOST BEAMINSTER

Based on farmyard manure. Free of unpleasant odours. Feeds and conditions. Suppresses weeds.

Delivered or
cash and carry



30 litre bags, bulk bags or loose bulk

COMPOSTED MANURE, MULCH,
POTTING COMPOST, TOPSOIL
and WOODCHIP

Telephone: 01308 863054 or 07974 943411
Email: komitkompost@hotmail.co.uk Website: www.komitkompost.co.uk

Curry Rivel Residents Care for the Enviroment



REUSE * REPAIR * RETURN * RECYCLE * REPURPOSE

Good news on the recycling front is that in future more plastic will be able to be recycled each week in our regular collections. Here is a summary of the information.

As the transformation of all Somerset waste services continues into 2020, Recycle More is the next big leap forward in driving up recycling in the county. The change will see a range of new materials added to weekly recycling collections items:

- **household and food plastic pots,**
- **tubs and trays;**
- **food and drink cartons;**
- **household batteries;**
- **and small electrical items.**

With so much being taken out of the waste bin each week, the frequency of rubbish collection can be reduced to every **three weeks**. Garden waste and clinical waste collections will remain unchanged. Collections from flats will remain unchanged, except that some extra materials may be collected.

Extra advice and support will be available for families using nappies and similar hygiene products. The upgraded service will be rolling out across the county from **Summer 2020** starting with most homes in the Mendip area. All residents will be sent full information well ahead of the change in their area. Even before Recycle More starts rolling out, a new contractor will begin work with a new fleet of collection trucks, and Somerset will switch from landfilling all its rubbish within the county to sending most for resource recovery at a new plant in Avonmouth, pumping energy into the national grid. Between now and then, we are building the new trucks, with space to carry the thousands of tonnes of new materials, redeveloping the depots across Somerset so they can cope with all the additional recycling, training all staff, and monitoring the new energy from waste plant being built.

In the meantime remember to take your plastic that can't be recycled at the moment to:

- **Tesco Langport mixed plastic recycling bin**
- **Somerton Recycling centre, there is a large skip for plastics**



Children's Page



Just For KIDS

Frogs

Common frog

Adults 6-7 cm
Smooth skin, which appears moist

Colour includes brown, orange and yellow. Some females have red markings on lower body.

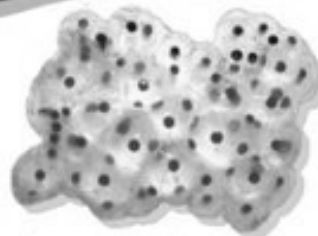
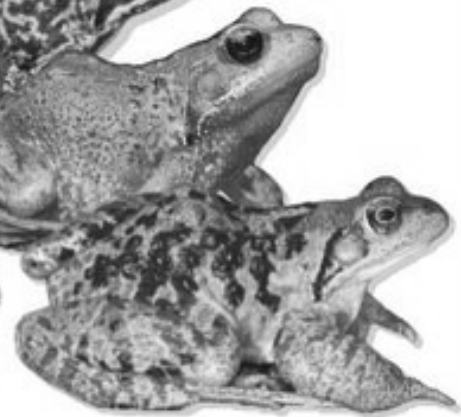
Usually has dark 'mask' marking behind the eye.

Breeding male

Grey/pale blue throat.

Thick front legs.

Dark (nuptial) pad on inner toes of the front feet.



Markings also variable, including varying amounts of black spots and stripes



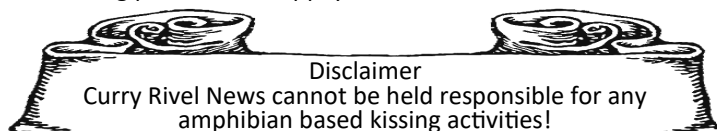
Spawn is laid in gelatinous clumps

Young froglets look like smaller versions of the adults.

The Princess and the frog

Once upon a time a careless princess was playing in the garden with her gold bauble when... SPLOSH, she dropped it into the pond. A frog heard her sobbing as she watched it sink to the bottom, "Why are you crying," asked the frog. "I've lost my gold bauble," said the princess. "I will fetch it for you, if you give me a kiss in return," said the frog. The princess agreed as she loved her gold bauble and knew the king, her father would be angry with her for losing it. However, when the frog gave the bauble back to the princess she just ran off without kissing him. Later that day the princess was having lunch with the king when the frog hopped into the dining room and started croaking loudly. "Why is that frog making such a racket?" demanded the king. The princess was forced to tell the story. Afterwards the king said, "Well you had better keep your promise," so the princess picked up the frog and gave it a kiss... WOOMPFF, the frog turned into a handsome prince. "Thank you," said the frog prince, "I was turned into a frog by a wicked witch and you have broken the spell." The princess and the frog prince lived happily ever after.

The End.



Disclaimer
Curry Rivel News cannot be held responsible for any amphibian based kissing activities!



St. Andrew's Church

Find us at: <https://www.curryrivel.org.uk/local-info/churches/st-andrews-church.html>
or <https://www.achurchnearyou.com/church/11260/>



We warmly welcome visitors and new members of the community to any of our services and other events.

February

Sunday 2nd - 4th before Lent

10.00 **FH** - All Age Family Service
11.00 **FH** - Short Communion CW
6.00 pm **CR OSR** - Evening Prayer CW

Thursday 6th

10.30 **CR OSR** - Holy Communion BCP

Sunday 9th - 3rd before Lent

9.30 **SW** - Holy Communion BCP
11.00 **CR** - Holy Communion CW & Sunday Club
6.00 pm **FH** - Evening Worship

Monday 10th

3.30-5.30 pm **CR** School Messy Church

Tuesday 11th

10.00-12.00 **CR OSR** - Craft & Coffee

Sunday 16th - 2nd before Lent

8.00 **CR** - Holy Communion BCP
9.30 **FH** - Morning Prayer CW
10.00 **CR** - All Age Family Service
11.15 **CR** - Short Communion CW

Thursday 20th

10.30 **CR OSR** - Holy Communion BCP

Sunday 23rd - Sunday before Lent

9.15 **CR** - Holy Communion CW & Sunday Club
11.00 **FH** - Holy Communion CW
6.00 pm **SW** - Evensong BCP

Wednesday 26th - Ash Wednesday

7.30 pm **CR** - United Benefice Holy Communion & imposition of ashes

CR = St. Andrew's Church, Curry Rivel

CR OSR = St. Andrew's Old School Room

FH = St. Martin's Church, Fivehead

SW = St. Catherine's Church, Swell

View from the Pew

by Florence of Fivehead

A church member writes about how their journey with God developed.

Some might wonder what brought a woman from the island of Borneo and her husband to move to a small village in the middle of the Somerset countryside. We have no family nearby and, prior to moving here, this part of Somerset was not on our radar, let alone Fivehead. Nevertheless, we came, we saw and I, not Harvey, who is more grounded and not prone to sentimentality, fell in love, not with the house, but with the old apple tree in our front garden. Here we have been living, more than 10 years on. Alas, my beloved tree is no more, save for a rotting trunk.

My journey with God by my side truly began in Fivehead. It happened gradually; not for me the voice of the Lord amidst the blinding light which St. Paul encountered en route to Damascus and which led to his dramatic conversion to Christianity. What started with me attending services at St. Martin's on Sundays ended with the scales being peeled from my eyes. I was yearning to know more about this astounding book called the Bible and Jesus' ministry.

World Day of Prayer

A special annual service to celebrate this day will be held on

Friday 6th March.

This service, which is inter-denominational, has been prepared by Christian women of Zimbabwe.

All are welcome - men, women, and children.

Details of times and venue will be in next month's CR News.



March

Sunday 1st - Lent 1

10.00 **FH** - All Age Family Service
11.00 **FH** - Short Communion CW
6.00 pm **CR OSR** - Evening Worship

View from the Pew ctd . . .

I have always kept a Bible by my bedside, for protection, I told myself, but it was left unopened for too many long years. Although I was baptised and was brought up an Anglican, I did not commit my life to God fully until we moved here. My faith grew as I attended Bible study groups amongst other Christians. I know that the only kind of journey I want is the one with God by my side.

After years of convincing myself that God could never accept and love someone like me, it dawned on me that God loves us all, believers, non-believers, those who have sinned and those who have strayed. We are all God's children and his abiding love for humanity is nothing short of miraculous.

Open your hearts, let the Lord in and, like me, you will be dumb-founded and blown away by His love, patience and compassion. Open your doors and let Christ into your hearts and your lives. It is as simple as that!

With love,
Florence

Peppard S

Funeral Directors

Chapel of Rest
Townsend
Curry Rivel

Bow House
Bow Street
Langport

01458 252505

Memorial Masonry Service

St. Andrew's Rotas February

Brass - Carol Haines & Lyn Cotterill

Flowers
1st & 8th - Adrienne Holmes
15th & 22nd - Sandra Hill
29th - Lent

Cleaning

1st - Nicky Barker
8th - Lynne Comley
15th - Lyn Cotterill
22nd - Julia Gauler
29th - Tina Geary



Shrove Tuesday - 25th February

Shrove Tuesday, or 'pancake day', is the last day before Lent, which for Christians is traditionally a time of abstinence. This was done to exercise self-discipline before God, and to help focus the mind on the last weeks of Christ's life as he faced the cross.

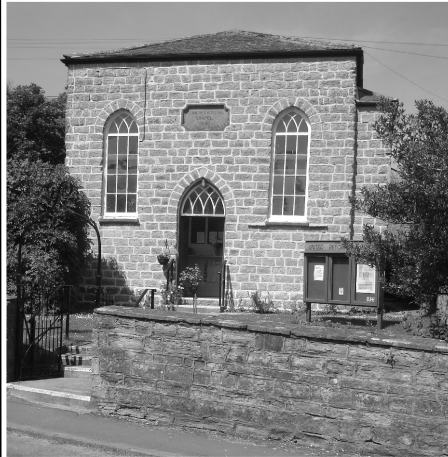
Lent can also be a time for doing 'extra' things - perhaps putting aside more time for prayer, meditation or Bible study.



Pancakes are eaten on Shrove Tuesday as they contain fat, butter and eggs, which as 'rich foods' were once considered 'forbidden' during Lent.

'Shrove' comes from the old word 'shrive', which means 'to confess', and so on this day, in the Middle Ages, people used to confess their sins, so that by faith they began Lent with a 'clean-sheet' before God.

United Reformed Church



OUR VISION

In each edition of the CRN, positioned beneath our service dates & times for the present calendar month along with our Minister's contact number, you will find **Our Vision** (or **Mission Statement** if you like) – not always in its fullest form, it contains our best attempt at describing **Who We Are** at the United Reformed Church, **What We Stand For**, and our **Best Intentions** for how we live those out.

Respecting the traditions of our past, in our journeying we do not demand acceptance of creed and dogma (amongst our small number you will find differing viewpoints and held beliefs – making for very 'interesting' debates!). We recognise that asking questions of faith and exploring what it means to follow the teachings of Jesus in today's world is challenging, and calls us to be constantly evolving, not complacent, and we hope means we are relevant, vibrant and vital.

We are always looking for new ways to express our vision for ourselves as a worshipping, God 'here & now' seeking community, ways that are relevant, have impact and, let's be honest, are achievable for the handful of folk that we are. Two ideas, amongst others, came out of our most recent discussion: faced with the climate crisis -so painfully and heartbreakingly demonstrated at the start of this new decade through the wild fires ravaging Australia and floods sweeping away homes, livelihoods and lives in Indonesia and Israel- we made the decision to explore becoming an eco-friendly Church.

February

(Services start at 10.30)

Sunday 2nd - Rev David Huggett

Sunday 9th - Mrs Jo Morling

(incl. Holy Communion)

Sunday 16th - to be arranged

Sunday 23rd - Rev Tim Richards

We are an inclusive, outward looking community and wherever you are on your life/spiritual journey we welcome you without regard to age, gender, denominational background, sexual orientation, race or ability. Tea/coffee is served after every service providing the opportunity to meet and chat with each other and the preacher.

URC Minister: Rev Tim Richards

01458 252799

OUR VISION ctd

Small fish in the huge pond of the planet, it can feel our little will make no difference – but if we were all to do 'our bit' it will add up to A LOT. Little change or adjustment here and there counts.

We also spoke about Lent and how the original religious season of penitence and preparation has become a generalised encouragement to 'give something up'. We wondered about an encouragement to 'give something to'.....

At the time of going to print, details have yet to be finalised but during Lent we are looking to encourage a 'giving to' in gratitude for what we have; in counting our blessings so to speak we would be encouraging donating something of our plenty to our local foodbank. Watch this space (i.e. March CRN) for how you might join us in using the period of Lent as a way of expressing gratitude and doing something seemingly little but making a difference in support of those struggling to make ends meet.

Alison Richards.

Tincknell Fuels

Your Local Fuel & Heating Specialists

Tincknell Fuels

- ☒ Reliable Fuel Deliveries
- ☒ Automatic Top Up Service



Tincknell Heating

- ☒ Gas/Oil Boiler Maintenance
- ☒ Boiler Installation
- ☒ Oil Tank Installation

01749 683911

www.tincknells.com



In February**Regular Events****MONDAY**

9.45	Art Club	Village Hall
3.30 - 5.30	Messy Church (2nd only)	School Hall
6.00	Pilates	Primary School
6.45	Explorer Scouts	Scout Hall, Langport

TUESDAY

10-12	Craft & Coffee (2nd only)	Old School Room
10.30	Line Dancing Classes	Village Hall
2.30	Forget-Me-Not-Café	Village Hall
5.45 - 8	Pilates	Primary School
6.00	Cub Pack	Scout Hall, Langport
6.30	Guides	URC Hall
6.30	Langport Youth Club	Ridgway Hall
7.00 - 9.00	Short Mat Bowls	Village Hall
7.30	Sedgemoor Garden Club (2nd only)	All Saints Hall, L'port
7.30	Tuesday Group (3rd only)	Drayton Village Hall

WEDNESDAY

9.30	Mother and Baby Group	Village Hall
7.00	Line Dancing Classes	Village Hall
6.45	Scouts	Scout Hall, Langport
7.30	Bell Ringing	St Andrew's

THURSDAY

10.00	WI	(2nd only) Village Hall
2.00 - 4.00	Short Mat Bowls	Village Hall
4.30	Rainbows	Village Hall
4.30	Brownies	Village Hall
7.30	Parish Council	(1st only) Village Hall

FRIDAY

9.30-2	Get Together Club	Village Hall
7.30	Cinema Night	(3rd only) Village Hall

SPECIAL EVENTS

15 Feb 3pm and 6pm	Curry Woods Initiative	The Old Schoolroom
23 Feb 9am - 1pm	Life Saving Skills	Langport Red Cross Centre
20, 21 & 22 Feb	Pantomime	
	email wannabe.1961@yahoo.co.uk	

Some Useful Telephone Numbers**Youth Organisations**

Beavers, Cubs, Scouts	01460 281184
Rainbows	01823 698940
Brownies	251953
Guides	252901
Langport Youth Club	0793 899 338

Sports Clubs

Short Mat Bowls Club	251201
Cricket Club	01823 698849 & 01458 252791

Social

Flower Show	250311
Out & About	252146
Royal British Legion	01460 281115
Twinning Association	251432
Women's Institute	259688
Rotary Club of Langport & Somerton	252813
PROBUS	252545
Sedgemoor Garden Club	250091
Heale Lane Allotment Association	253953
Curry Rivel in Bloom	762296
Get Together Club	251524
Health Walks	250725
Mother and Baby	07732 197030
Forget-Me-Not-Café	252710 & 741606
Inner Wheel	251940
Tuesday Group	252657/252022

Arts

Entertainers	250311
Music Club	250863
Dancing Classes	07730 755203
Art Club	253126

Community Facilities

Village Hall (crvhbookings@gmail.com)	741606
Old School Room Bookings (crosrbookings@gmail.com)	250655/253856
United Reformed Church Hall - Bookings etc.	259391

Community Services

Doctors	250464
Police	101
Yarlington Housing	01935 404500

Education

Little Pips	252822
Primary School	251404
Huish Episcopi Academy	250501
Huish Episcopi Leisure Centre	251055

Local Authorities

Parish Council (Clerk) m.ludgate@btinternet.com)	251432
District Council	01935 462462
County Council	0300 123 2224

Religious

Church of England Rector	251375
Churchwarden	259003
Secretary PCC	251355
Organist & Bell Ringing	253856
Flower Guild	252710
Roman Catholic Church, Somerton	274008
URC Minister	252799

**Deadlines for March Edition**

Advertising:	5pm Thursday 6th February
Send to:	crnadverts@btinternet.com
Comments & Articles:	5pm Tuesday 11th February
Send to:	crng2019@gmail.com

The Curry Rivel News is published monthly by the **Curry Rivel News Group** and is delivered free to households

Editing Team	Helen Breeze/Jane Hamlin	252946
	crng2019@gmail.com	
Advertising/Treasurer	Rob Atkins	253008
	crnadverts@btinternet.com	
	crntreasurer@btinternet.com	
Publisher	Mike Davis / Richard Wilkins	252554
	crnpub@gmail.com	
Distribution Manager	Hazel Morris	
	hazelmorris200@gmail.com	
Secretary	Angela Edwards	
Staff Photographer	Mike Mason	252076
Church Pages	John de Ronde	251355
	johnderonde51@hotmail.com	