



Curry Rivel News

PUBLISHED MONTHLY AND DISTRIBUTED FREE TO ALL CURRY RIVEL RESIDENTS; ALSO AVAILABLE IN VARIOUS OUTLETS AROUND CURRY RIVEL

Langport District Community Christmas Lunch

Jo Stradling



We are hoping to resume "normal service" this year and are planning to hold our usual Christmas Day lunch on Saturday 25th December at Huish Episcopi Academy for anyone in the local area who may otherwise be spending Christmas Day on their own.

We can offer you good company and a traditional Christmas lunch. The event is free, but places must be booked by Saturday 18th December so that we can organise catering. Transport will be available if you need it – just let us know.

If you would like to book a place for yourself, or you are aware of anybody who would like to join us, please get in touch.

Due to the current Covid situation and for the protection of both guests and volunteers, we are asking that everyone involved in this event is fully vaccinated.

Please contact Jo

Stradling:

01458 252388 or

jostrads@yahoo.com



Christmas Lights in Chatham Place

Sue Walsh

My brother, Roy Webb, will be setting up his Christmas lights at 37 Chatham Place again this year and hopes that you will enjoy the display. There will be a collecting box in aid of **Dorset and Somerset Air Ambulance** so that you can make a donation to support this very important charity. The lights will be on from the beginning of December until the New Year from 4:30pm until 9:30pm each day. I am sure that they will brighten up your Christmas.

Our Community of Cranes

Liz Antliff-Clark (RSPB volunteer)

Out on the West Sedgemoor Reserve our Cranes have been very busy. This year they got down to some serious breeding. The Cranes (released on West Sedgemoor between 2010 and 2015) have managed a modest breeding record since 2016 but this year they have tried very hard and raised 15 young to the point of fledging. Their nests have been recorded in many different locations including the local area but in the Autumn they all return to their 'home' on the Reserve. Then we can see the evidence.



24 pairs of cranes were recorded nesting in various locations. They were ringed project birds with some unringed birds assumed to be those hatched and raised in Somerset. 16 of these pairs hatched chicks but only 12 pairs raised chicks that eventually fledged. So, out of 25 chicks 15 are still with their parents. This is the best result yet. All but 2 are here in Somerset but 1 is in Cambridgeshire with wild cranes and another is at Slimbridge where a small group of project cranes has chosen to settle.

This was also the first time a crane hatched in Somerset has produced young. She is 5

years old and was ringed as a chick so we can be sure that her parents were project birds. She paired with an older project bird to raise one juvenile. Other unringed cranes have bred here but it can't be confirmed that they also had project parents. Hopefully more truly Somerset cranes will breed next year.

2021 has turned out to be a special year in the story of Cranes returning to their old home after 400 years and appears to be a turning point in the success of the project. The environment seems to please them and they make no effort to leave apart from during the breeding season.

In spite of the fact that they are such large birds they are not easy to see. They wisely stay away from people and spend a lot of time in tall vegetation. However, at this time of year they can be seen occasionally from the Parrett way between Oath and Stathe. Good luck if you are out looking!

Sedgemoor Gardens Club

Sylvia Goodenough

Sedgemoor Gardens Club held their November meeting on 9th, as usual in All Saints' Hall, Langport. Our speaker was Gilly Hayward, a stage manager turned gardener, on the *When, Why and How of Pruning*. Gilly has worked in some illustrious gardens, including Highgrove House where she has polished her art of pruning in them and in her own garden. She illustrated her PowerPoint presentation by discussing the apple tree in her garden which had been sadly neglected by the tenants who had occupied her house while she was working abroad. Before and after photos of the tree showed what a difference pruning made. Following her 3Ds principle i.e., in

order, Dead then Diseased material, and finally considering the Density of branches, so opening out the centre of the tree to the light and air. We were taught the correct way to remove branches with minimum risk of infection to the tree - the tenant was again cited in photos of how not to do this! Gilly then went on to discuss when and how to prune herbaceous plants such as roses and wisteria - a show of hands revealed many members had wisterias in their gardens, but few felt they were truly under control! Her final slides were showing pruning to achieve effects such as topiary, cloud pruning and other interesting and unusual shapes.

There were several questions about members' plants and Gilly reiterated her opening remark that what every gardener needs is a good book (or two!) on pruning. Our December meeting is our quiz and buffet supper evening, which is by ticket only. The committee have thought long and

hard about how to make this Covid safe and now feel confident

the right plans are in place. We will start the New Year on 11th January, with a talk by Richard Horswood on *Alpines*. New members and guests will be very welcome to join us in All Saints Hall at 7 for 7.30. For more information please ring our secretary on 01458 259025 or see our website at sedgemoorgardensclub.co.uk. We would love to see you!



Wiltown Garage

Wiltown, Curry Rivel TA10 0JF
Mon-Fri 8am to 6pm
Saturday 8am to 12pm
www.wiltowngarage.com



MOT
Test Centre

- ◆ Batteries
- ◆ Exhausts
- ◆ Clutches
- ◆ Tyres

Vehicle Servicing & Repairs
Air Conditioning Servicing
Breakdown Recovery Service
Car Valeting Inside & Out
Body Repairs & Car Sales

Phone **01458 252 166**
Mobile **07921 788 169**

We can service your **NEW CAR** and it **WON'T AFFECT** The Manufacturer's **WARRANTY**. Ask us for details



SEAN MOUNTER

Plumbing & Heating Engineer



CTIB
Trained

Gas
contracted
installers

For full Gas & Oil Central Heating

Fully apprentice served
with City & Guilds
qualifications

All types of plumbing & heating installed, Boiler changes, Heating upgrades

Complete bathroom, shower rooms installation incl. tiling, building work etc.

No job too small. No VAT. Free competitive quotes and advice

Tel: 01458 253015
Mob: 07748 183282

Herald House,
Langport TA10 9RQ



CurryRivel
ABOVE THE LEVELS

Your Community Website
curryrivel.org.uk



Movies in the Village Hall

mvh.curry.wix.com/films

That's all folks! (for now)

Alison Cockrell



As we know many of you will be very busy in the run up to Christmas we won't be having a movie screening in our Village Hall in December. We'll be back in the in the new year with a new programme of

fabulous films. A big "thank you" to all of you who have supported Movies in the Village Hall during the last three months and we wish you a happy and peaceful Christmas.



WANTED NEW MEMBERS

for the

Curry Rivel News Distribution Team

Can you spare an hour or so
a month to deliver a bundle
of CR News

For more information
please contact Hazel on
07730 755203

D.D.I.Y

Don't Do It Yourself!

Do you have any work to do in or around our property that you can't or don't want to do? If so, we could do it for you.

We are a husband and wife team with over 30 years of home improvement, refurbishment and maintenance experience.

- Free Estimates
- Reliable
- Personable
- Clean & Tidy

Contact Roy or Debbie

01458 762604 or

07920 192471

Find us on Facebook

DDIY Don't-Do-It-Yourself

PRIME PLUMBING

- Qualified to provide plumbing and related electrical services.
- Specialist in kitchen and bathroom planning and installation.
- Tiling, plastering and flooring work undertaken.
- Will also investigate and repair plumbing and related electrical problems.
- Advice and estimates provided free of charge.
- No VAT charges.



For any work required, please contact

Richard Ovenden, Prime Plumbing

on **07800 543795** or e mail: prime.plumbing@btinternet.com



We're local, we're friendly and we're here to help. We stock a wide variety of meats including Game, Homemade pies, pasties, scotch eggs and faggots. And a wide selection of local cheeses and local seasonal veg.

6 Parrett Close, Langport, TA10 9PG

Tel: 01458 250778

Mon-Fri 7am—5pm

Sat 7am—4pm



Curry Rivel Village Hall Big Breakfast is Back!

Sunday 5th December 8.30am – 12.30pm



Hazel Morris

It's been two years since the last Big Breakfast and the Village Hall Committee is excited to announce its return. The Big Breakfast is usually run as a fundraising event for the upkeep of the hall but this year we feel it's much more about reuniting the community. It has always been hugely popular and is a great opportunity to meet up with friends both old and new.

We are, of course, having to make some slight changes but you will still be able to enjoy a hearty breakfast (vegetarian options will be available) and the usual refills of tea and

coffee. And why not treat yourself to a glass of Bucks Fizz?! Unfortunately, Father Christmas finds himself exceptionally busy this year so won't be able to attend but he has delivered a little something for the children who come along. And the Tombola will be back so there will be plenty of chances to take a present home with you. The 200 Club draw will also take place so if you haven't got your ticket yet, please contact Hazel.

Please note, hand sanitisers are available at the hall and whilst not compulsory, we would ask that, if you can, you wear a mask until you are seated.

We look forward to seeing you. Everybody welcome!

Tuesday Group - 'Fond Farewell'

Barbara Lancey

It's been a while since my last contribution to the CRN, but as many of you will already know, and for those who aren't aware, sadly the Tuesday Group has become a casualty of the pandemic.

We had of course hoped to restart meetings as things began to ease following the last lockdown, and thought long and hard about all the practicalities involved, but having approached members it was evident that 'getting back to normal' was not going to be an easy task. For various and very understandable reasons many were unable to commit, and with such uncertainty about the group's future it was felt the group had sadly come to a natural conclusion. While we had all enjoyed being a part of this social group, it was no longer viable.

The Group has enjoyed such varied and diverse meetings over recent years, and members always seemed to leave with a virtual 'spring' in their step! From magicians to drummers, from film extras to blood transporters, from trekkers to line dancers, and of course the seasonal parties - the group has no doubt

instilled some fond memories in its members, and the camaraderie and social hub will be greatly missed.

However, we didn't just close the door! As a final farewell, members were treated to a 'High Tea' at the Drayton Crown, who certainly did us proud with scrumptious sandwiches, scones and cake, and of course endless cups of tea!! It was a fitting end to offer thanks for members' support and commitment over the years, some having been there at the start 40 years ago with the original 'Young Wives Group'!

So a final heartfelt thank you from me to all those involved for however long, and to all those others who have taken an interest in our endeavours.



- Trees & Hedges
- Dry-Stone Walls & Features (DSWA Professionals)
- Lime Mortar Walls & Pointing
- Gardening & Landscaping
- Fencing

Telephone: 01458 250 819
Mobile: 07765 518168

Sticks & Stones

Emrys Evans & Denise Evans

Wood Drove Kennels & Cattery

A family run 'home from home' in Langport for your dogs and cats, with plenty of space and cuddles!



Viewings by prior
appointment

Tue, Fri & Sat at
2pm
01458 250556

www.wooddrovekennelsandcattery.co.uk

Charity Carol Service

Sunday 5th December

Alison Reed Richards and Tim Richards

Curry Rivel United Reform Church will be holding a Charity Carol Service on Sunday 5th December at 4pm to support the ARC Shoebox Appeal. ARC was formerly known as Taunton Association for the Homeless.

We invite you to join us for our Carol Service at which Shoeboxes filled with items for individuals supported by ARC will be collected, carols will be sung, and refreshments (including mulled wine and mince pies) will be enjoyed!

We would love you to bring a filled shoebox, but a monetary gift, if you prefer, will be used to buy items. These are the things to include in your box: Notepad and pen, small 2022 diary,

Christmas socks, shower loofah, toothpaste and toothbrushes, roll-on deodorant, shower gel, shampoo,

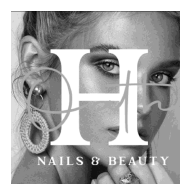
sanitary products, sweets and chocolate.

These extras would be appreciated if you can manage it: A torch, blankets, towels and thermals. You could even include a Christmas card in your box to wish the person receiving your gifts a happy Christmas. If you choose to put your items in a shoebox and would like to wrap it, we ask that you please wrap the lid and box separately, as every box must be checked before giving out to clients for health and wellbeing reasons.

If you are able to join us, please let us know so that we can be sure to have sufficient refreshments. We invite you to provide us with a Carol of your choice, too, to be included in our service.



Reply to: richardstim@hotmail.com or heartandhome@hotmail.co.uk
Help us to support those less advantaged this Christmas time.



Oath Hill Nails & Beauty

NAILS

File, Shape & Polish...Gel Manicure
Gel Removal...Nail Repair...Nail Art
Encapsulation...Acrylics...Infills
Acrylic Overlays...Acrylic Removals

FEET

Express Pedicure...Full Pedicure
Luxury Spa Pedicure

WAXING

Eyebrow Wax & Tint...Lip Wax
Half Leg...Full Leg...Under Arm
Chest, Shoulders & Back
Basic Bikini Wax

LASH LOVE

Infills based upon two week top-up
Lash Extensions...Natural Lash Tint
Lash Lift & Tint

FACIALS

Mini, Standard & Luxury Facial

MASSAGE

Swedish Massage (Full/Half Hour)
Hot Stone Massage (Full/Half Hour)

**You can find us at the bottom of
Red Hill, Curry Rivel:
Oath Hill Barn, TA7 0JP
Tel: 07837 283884
Email: amyhope86@icloud.com**



Naturally Beautiful offering beauty, skin & non-surgical cosmetic treatments

Lucy at Naturally Beautiful, is an experienced beauty therapist specialising in lashes and brows as well as non-surgical cosmetic treatments, based in Curry Rivel

Treatments

- CACI Non-Surgical Facelifts
- Light Therapy & Microdermabrasion
- Radio Frequency Collagen Lift
- Eyelash Extensions & Lashlifts
- Massage & Facials
- Manicures & Pedicures
- Waxing

Your Non-Surgical Cosmetic Specialist

An amazing alternative to facelifts and liposuction providing painless and nonsurgical treatments for the face and body.

Introducing... Eve Taylor aromatherapy, skin care and body care products are professional, affordable, proven, trusted and uncomplicated.

Call today 07903 727590 or for more info & to book

www.naturallybeautifulsomeset.co.uk

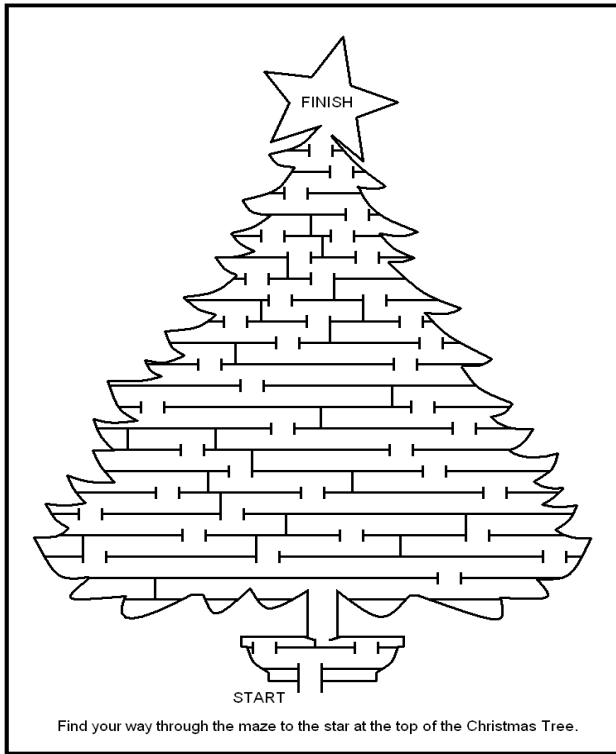
/naturallybeautifulsomeset

Children's Page



Just For KIDS

CHRISTMAS SPECIAL



B	S	T	O	C	K	I	N	G	S	Q	V	I	S
V	U	A	I	P	L	E	S	T	H	O	P	M	N
C	C	F	N	T	E	D	G	K	O	L	R	I	O
U	A	W	S	T	I	N	S	E	L	E	E	S	W
S	T	R	V	C	A	J	L	O	L	I	I	T	M
L	U	E	O	D	R	C	V	H	Y	P	N	L	A
E	S	R	S	L	T	S	L	P	H	A	D	E	N
D	E	L	V	E	S	R	R	A	S	S	E	T	U
G	S	H	S	T	R	S	T	S	U	X	E	O	R
E	S	M	I	N	C	E	P	I	E	S	R	E	Y
S	G	O	O	D	W	I	L	L	M	Z	L	P	Y
S	D	T	H	E	L	E	B	V	E	S	S	U	X
S	L	E	E	V	E	H	O	L	G	Y	Y	E	V

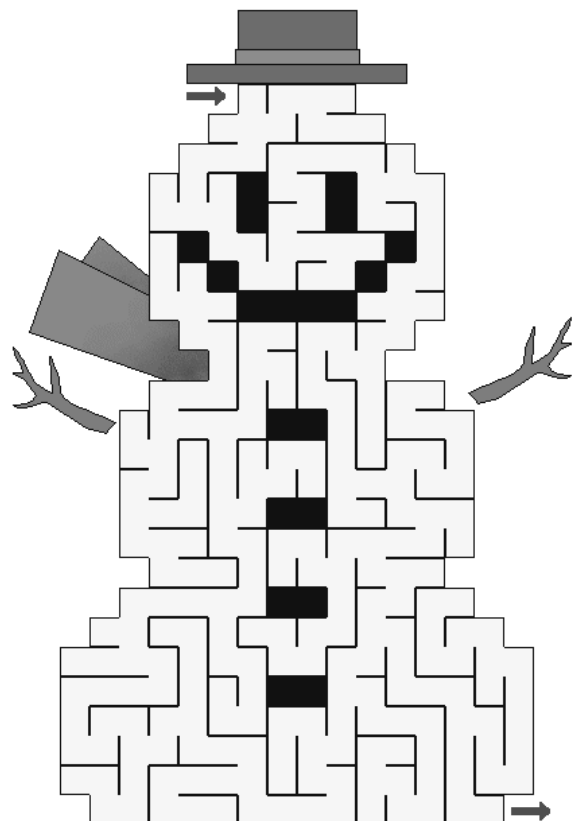
Mistletoe
Mince pies
Santa Claus

Stockings
Snowman
Goodwill

Reindeer
Sledge
Holly

Elves
Carols
Tinsel

Spot the difference



Children's Page



Just For KIDS

CHRISTMAS

SPECIAL



1

Christmas Crossword

Across

- 2) Which animals help Santa (8)
- 3) What Santa rides on (6)
- 5) Which Reindeer has a red nose (7)
- 7) They help Santa in his grotto (5)

Down

- 1) Which month is Christmas in (8)
- 3) Another name for Father Christmas (5)
- 4) You decorate this and Santa leaves gifts under it. Christmas ___ (4)
- 6) Kids open these on Christmas day (8)

Letters to Editor

Dear Curry Rivel News,

Just a polite notice to would be Curry Rivel residents having gatherings. Please tell your visitors to be considerate when parking vehicles in front of other residents' driveways as residents do have to get in and out of their driveways. This is even more inconsiderate when there are adequate parking bays nearby.

Thank you. We all have to respect our neighbours.
Yours sincerely,

Nigel



The SCOP26+ Conference

Matt Geen

On Saturday 6th November 2021, Somerset had its own climate conference in the Edgar Hall, Somerton: "SCOP26+". It was arranged by members of Somerton and Langport Town Councils, under the banner of the Levels Climate Forum, a forum of local councils around Langport.

The conference was, of course, timed to coincide with the UN COP26 in Glasgow. The aims were similar, but on a very local scale.

Twenty-six local councillors were present, together with many other interested people. Representatives of Curry Rivel Parish Council and members of the public who work on local climate and biodiversity initiatives attended and contributed. A variety of speakers gave relevant and interesting presentations. A member of the Farming and Wildlife Advisory Group (FWAG) described how the Somerset Levels are ideal for producing grass-fed meat, and how farmers are working together to meet the problems of reducing profits and increasing challenges.



**LEVELS
CLIMATE
FORUM**

A representative of Carymoor Environmental Trust explained how they are inspiring a new generation by hosting school visits. Glastonbury Town Council described how it is working to reduce its own carbon footprint, being committed to being carbon neutral by 2030. A retrofit assessor described how she visits homeowners in the Bruton area and gives detailed advice on making their heating more efficient. Such a service would be useful in Curry Rivel, but in the meantime she recommends contacting the Centre for Sustainable Energy in Bristol <https://www.cse.org.uk/>.

Curry Rivel Parish Council is running a Heating Initiatives project, and is about to contract a consultant to advise the village. We all left the conference feeling just a little more hopeful for the future.



Somerset levels

Langport & District Red Cross Fund Raising

Chris Cox's latest effort to fund raise for the Langport & District Red Cross Group, of which he is the leader, is the publication, just in time for Christmas, of a companion book to his 'Total Experience Corner' memoir of a year in Jamaica. It is the life story of Jim and his ancestors, from an early Victorian eloper to the present day. It is called 'Jim Jams' and relates the many 'jams' Jim and his relations have got themselves into over the years, many of them highly amusing with a sprinkling of tragic and heart-stopping sadness. Printed and e-book copies will be available on Amazon from

early December, probably at £5 (plus postage) and £2.50 respectively. You can also receive a printed copy direct from Chris for £5 including postage. Total Experience Corner is also still available from Chris at £12 including postage or as an e-book.

All profits will be donated to the British Red Cross to help keep their Langport Centre Shop open. To order copies from Chris e-mail cox.cj@btinternet.com or send a text to 07963 689 699.

Forsey and Son

ESTABLISHED 1946
INDEPENDENT FAMILY FUNERAL DIRECTORS
MEMORIAL MASONS • PRE PAYMENT PLANS

Pound Pool, Somerton, Somerset TA11 6LZ
Telephone 01458 272297 or Langport 01458 250509

28 High Street, Butleigh, Glastonbury, Somerset BA6 8SY
Telephone 01458 850654

Willowfields, Lowerside Lane, Glastonbury, Somerset BA6 9GY
Telephone 01458 831020



www.forseyandson.co.uk



AC FENCING

FENCING - GATES - SHEDS - REPAIRS
SECURITY FENCING - STOCK FENCING

07470 286765

ac-fencing@outlook.com

Tincknell Fuels

Your Local Fuel &
Heating Specialists

Tincknell Fuels

- ✓ Reliable Fuel Deliveries
- ✓ Automatic Top Up Service



Tincknell Heating

- ✓ Gas/Oil Boiler Maintenance
- ✓ Boiler Installation
- ✓ Oil Tank Installation

01749 683911

www.tincknells.com

01458 259679 / 07779 322130

S R BUILDING

Brickwork
Plastering—Roofing
Patios—Tiling
Decorating
All General Building Work &
Property Maintenance

stephen.reddings@live.co.uk

Hamar Fencing & Garden Services



- * Specialist in fencing & gates
- * Patios & decking
- * Hedge trimming & tree work
- * Landscaping
- * Turfing & artificial lawn

☎ 07792567318

✉ hamarfencing@yahoo.co.uk
hamarfencing.com



KEVIN PRICE (PREEFENCE LTD)

All types of fencing supplied and installed.

Panel, Closeboard, Post & Rail, Stock fencing & Gates.

Free no obligation quotation or advice

Contact Kevin Price on 01458 251123 or 07968 565939



AGRICULTURAL
&
EQUESTRIAN



Gina Beauchamp

cribsomerset@gmail.com 01458 762296

CRiB would like to wish everyone a very Happy Christmas and a healthy New year !

We hope you are enjoying the winter planting around the village. We have just planted approx 500 spring bulbs at the war memorial for a display next spring. Many of the old bulbs had been eaten by mice!

We are looking forward to returning to 'normal' next year and will be entering the South West In Bloom competition again. Anyone in the village can help, just by keeping your front garden tidy, weeding the driveway and having some colourful flowering plants on display. The judges drive through the village and we take them to see the highlights on foot.

We will be holding the annual Front Garden competition again next year and the colours will be purple, white / silver and green to represent 100 years of the WI in Curry Rivel and the Queen's Jubilee. Please join in to make this a special year for the village.

Many people around the village have said to me 'you should see my garden in the spring' so next year let's have a Spring Front Garden Competition as well! We will judge in February/ March/April. The date will depend on the weather. Contact Gina as above to register your interest. Let us know when your spring garden is at its best.

Open Gardens 2022

We will definitely need new garden owners to volunteer to allow the event to take place next year. We have some already, thanks to those who have volunteered. It will be subject to the status of Covid 19 at the time, but the usual date of the first Sunday in June would make it Sunday 5th June; or possibly 12th would be more suitable to have more plants flowering. We will see what other events are on at the same time before deciding a date. If you would like to consider opening your garden and would like to know what is involved, please get in touch. It would be lovely if we could combine it with a Big Breakfast in the village hall as usual, but again we will have to see about Covid 19! A meeting will be arranged soon. Any garden, large or small would be very welcome, it can be a new garden or a well established garden or one that has had a make over. It is a busy day for garden owners but it is very rewarding. The proceeds go to the village, mainly to the two churches and to the school.

Jobs to do in the Garden in December

Make a Christmas / Advent garland for your front door by pruning fir, holly or ivy. Make a circle of wire and attach, or buy a moss ring. Add four items such as berries, fircones, cinnamon sticks, baubles to signify the four Sundays in advent and tie a bow at the top or bottom.

Rake up fallen leaves to make leaf mould for next year.

You can still plant bulbs up until the end of December.

Order seeds for next year.

Plan where to put a water butt if you haven't already got one.

Walk around your garden and dig out any weeds still growing. Little and often makes it a much easier job.

A Year in the Allotment

Nicky Barker

[Nicky runs the CRiB allotment and does a tremendous amount of work. It always looks amazing, well done Nicky !]

We started the year with a bang as some of the greenhouse glass was damaged in a storm. After putting it back together all was well and we had kept our over-wintering plants alive; dahlias and chrysanthemums being some of them. Having planted garlic, shallots and onions in the autumn we were pleased to see all were healthy and growing well. Broad beans and more onions were planted to see us through the whole year.

In March we planted three types of potatoes: Maris Piper and Salad Blue (a blue heritage variety from the 1900s), and King Edwards, a good all-round crop. As the year progressed, the bulbs we had planted came through and, having cut the hedge back, we had lots of snowdrops and wild daffodils. Our small ponds became really busy with frogs, and we had newts as well. The birds just love the half water barrel pond, and nest in the hedging nearby. Just as our strawberries were coming to fruition, badgers dug up our raised bed to reach a bumble bee nest in the centre! They came to visit us twice so no strawberries this year!

As the summer progressed our courgettes were great, as were all our squashes and runner beans. We gave all the excess to the food bank in the village. Having planted salad, tomatoes, peppers (hot and mild) we had lots to use and give away. Our corn and beetroot also did really well, as did our herbs. Rocket, rosemary and basil thrived, and so did our marigolds, sunflowers and feverfew which all bees love. So to the end of the year. The apples are picked and juiced, and now we are putting the allotment to bed for the winter. The next chapter starts with feeding and getting the soil ready for next year. Do visit on a warm day – and the peace is lovely. There are benches to sit on, so you can watch the birds and admire the view.



Thank you

Curry Rivel News Group would like to thank everyone for their contributions and advertisements over the last year; and we are particularly grateful for our large group of volunteer distributors.

Very Best Wishes for Christmas and the New Year

Clean as a whistle!

We can clean anything in your property.

Inside and out, including:

- Windows
- Gutters and downpipes
- Facias, soffits and frames
- Conservatories including roofs
- Solar panels
- Patios, pavements and drives
- Greenhouses
- Carpets

Just contact us to discuss your needs:

Tel: 01823 690154

Mob: 07590 636079

E: kevin@bawdencleaning.co.uk

BAWDEN

CLEANING SERVICES LIMITED

Established 1982

*A great place to make friends,
especially for those with memory challenges*

CHRISTMAS PARTY
7th Dec

Forget Me Not Café

Regular Café Starts
11 Jan 2022

Every Tuesday 2.30pm till 4.30pm
The Village Hall, Church Street, Curry Rivel, TA10 OHE
01458 252710 / 01458 396123 / brian1122@btinternet.com / clhampton@live.co.uk



Small Pet Boarding in Curry Rivel

Rabbits, guinea pigs, hamsters, gerbils, mice & other small pets.

A caring, safe environment for your furry family member.

Contact Roxane for info:

07774 851194

mail@fairviewhouse.com



@furrypawshotel

"BOOTHIE"

General "Handy Man" Services

- **Window Cleaning** with Reach & Wash System
- **Guttering Cleaned & Cleared**—Give your gutters that spring clean
- **Grass Cutting; Shed Refelting**
- **UPVC Cleaned & Revitalised**—we can restore your Fascias, soffits, door & window frames to look like new

If the job you need isn't listed, just ask

Call Mike Booth on 01458 251498 or 07872 345623

email: mikeboothie@btinternet.com



Curry Rivel & Chevilly



Twinned Communities since 1998

Phone 01460 281905 for more details

Curry Woods Conservation Trust: Annual General Meeting

Peter Goodenough

The Trust will hold its first Annual General meeting on the 7th December in the Old School Room starting at 18:30. The meeting will be preceded by a talk about the work of the *Re-imagining the Levels Group* in tackling the problem of flooding in Somerset by finding areas on the hills above the levels where trees can be planted. This is also the aim of the "Trees for Water" scheme funded by the Somerset Rivers Authority and our trust has worked "hand in glove" with these two organisations to plant up the Curry Woods area. Much, much more land on the Somerset hills must be used to plant trees if there is any hope of preventing the levels like West Sedgemoor in our parish from permanent flooding in future warmer years.

So please come along and hear about our efforts to help you combat climate change.

There will be a general report on the last eighteen months' work to buy the land and plant the trees. A financial report will be presented on fund raising and fully examined accounts will be available for scrutiny. These have been submitted to the Charity Commission in their required format. There will be a report on setting up the charity and the website and how to access the latter. As we are all going to have to change how we live our lives now that the new

warmer world is with us, it will be a time to celebrate our community's response to combat flooding and increase biodiversity by conserving and improving our great natural assets in Curry Woods.

Funding: Our participation in the Aviva Community and Climate Change funding programme that I described last month was very fruitful. A week after the programme opened on Crowdfunder we had reached our target and so a "stretch target" was put in place as the fund will be open until the 3rd December. We also are very grateful for a grant from the Curry Rivel News to help with hedgerow management on the Trust's land. Once the next round of planting is done, we will move on to developing a management plan for the existing woodland, managing our hedges to

maximise insect and bird life, and marking the boundaries in the wood. The footpath in the wood will also be renovated and information boards built.

And finally.....Just a reminder that we will have another 400 trees to plant in early December and any help will be much appreciated. For dates and details watch the website or ring 01458250091/07903030533. In the meantime, thanks for all your support in the last year and, at the end of a very warm November, the team at the Trust wish you a Happy Christmas, hopefully with our families this year, and the best of everything you could wish for next year.

Website:
currywoodsconservationtrust.com

VACANCY

Bookings Secretary Curry Rivel Village Hall

Volunteer required to manage the bookings for this busy Village Hall. You'll need to be well organised and have reasonably good IT skills. If you're interested, please contact Hazel on

07730 755203



- CARPETS & VINYL
- WOOD & LVT
- BLINDS & SHUTTERS
- DOMESTIC & COMMERCIAL

THE OLD POST OFFICE,
38 NORTH STREET,
LANGPORT,
TA10 9RH

T: 01458 887301 E: langport@sjhcarpets.co.uk W: www.sjhcarpets.co.uk
MONDAY-FRIDAY: 9-5 SATURDAY: 9-1

Also at Tythings Commercial Centre, Wincanton & High Street, Tisbury

Two for the price of one at the WI

Carolyn Paton

Before welcoming speakers to both the October and November meetings, the president, Anne Geach (01458 253078) ran through the current notices and activity options, as well as pointing to future events, notably the celebrations for the Curry Rivel WI Centenary, which falls in 2022. Topics for the October and November meetings found common cause in our planet – both its powerful normal functioning, and how it is becoming increasingly destabilised by human activity.

Tsunami

October saw the arrival of Luke Simon, a local survivor of the 2004 tsunami, who spoke, and showed on screen, images relating to that terrifying, though natural, event- and to the work that his experiences have led him subsequently to set up and run.

At the time of the disaster, the Thai people were overwhelmingly kind and helpful to the foreign tourists in their midst in spite of their own huge losses. Something of this spirit is behind the push to help and empower upcoming generations of children whose lives today – though they may be rich in love – are severely lacking in educational facilities; a very limiting factor. Luke and his family were inspired to set up and run *School in a Bag*, which today has the strapline 'Transforming' lives through Education'

The thinking behind School in a Bag – a rucksack really – is that, armed with basic stationery, learning materials, eating utensils and an ingenious water filter, a child has a much better chance of learning effectively and thereby pulling him/herself out of extreme poverty. Events have proved that the children who have benefitted from this uplift, have often expressed a wish to work to give out to others in their turn. The project is now active in 48 countries.

Readers may have heard the appeals in aid of the many Afghan refugees which have come both to Europe and

to the UK. 'School in a Bag' is working on sending 3000 bags for the children who may be traumatised and possess just in the clothes they stood up in when they left. It is to be hoped that to some extent at least, these children's lives can be 'transformed through education'. Anyone wishing to know more about this project needs only to look up 'School in a Bag'.

Extinction Rebellion

November's speakers represented *Extinction Rebellion*, an organisation formed out of concern for what is happening to our planet. Three local members – Pauline and Sigurd Reimers and Karuna Tharmananthar, gave a calm and reasoned explanation of the movement, encompassing what is known about the science of climate change, the actions – individual, national and global, that need to be taken to avert the kind of tipping point that would lead to irreversible disaster, and also what motivates them as citizens to ring alarm bells. We learned that awareness of the rising of temperatures was first noted in the early 1800, and was picked up again in the era of Thatcher and Reagan. So much more is now understood about what is happening to the climate, and the reasons for that. The urgency for action is starkly illustrated by the plight of low-lying islands already in peril from the rising seas.

Our

speakers

told us of the various ways they try to illustrate what is happening – sometimes in amusing scenarios, eg holding a tea party on the sands in the way of an incoming tide – and to convince the public of the urgency for immediate action.

Vested interests across the globe may not be eager to embrace change, as to do so threatens their industry, and we ourselves may find such changes disturbing to our comfortable Western lives, not to mention our pockets, but it is clear that climate change and its consequences are around the corner. Our children will bear the consequences.

The film maker Fanny Armstrong has said, "The people who came before us didn't know about climate change, and the ones that come after will be powerless to stop it. So it's down to us."

Discussions after the presentation encompassed how best we can do our bit in terms of challenging government decisions by lobbying MPs and local councils, by keeping the situation in the public eye through the local press (well done Curry Rivel News!) and at an individual household level by cooperating conscientiously with local initiatives such as waste disposal and water retention ideas.

We are not short of challenges!

theWI
INSPIRING WOMEN

Bow House Physiotherapy Practice

Stacey's Court Car Park
Bow Street
Langport TA10 9PQ
01458 253388

Chartered Physiotherapists

Also available:-
Foot Health and Orthotics, Massage
Therapy, Homeopathy,
Occupational Therapy, Acupuncture, Bowen,
Reflexology, Hopi Ear Candles, Pilates
Classes.

www.bowhousephysiotherapy.co.uk
info@bowhousephysiotherapy.co.uk

Peppard S

Funeral Directors

Chapel of
Rest
Townsend
Curry Rivel



Bow House
Bow Street
Langport

01458 252505



Memorial Masonry Service

Golden Charter
Funeral Plans

December Village Agent News

Jo Robinson – jor@somersettrcc.org.uk – Langport Area Village Agent

Are you staying warm and well this winter? Having a cold home severely increases risk of illness and premature death, especially in older people, and no one should suffer a cold home, have to choose between heating and eating, or be able to stay warm and well with food and appropriate clothing.

This year will be especially difficult for many with the sharp rise in fuel costs putting pressure on household budgets. Village Agents are delighted to be the distributor of the Surviving Winter grants on behalf of the Somerset Community Foundation – to help those most at risk pay for winter fuel, as well as being used in other ways to keep people warm and well - for example, a weeks' worth of hot meals or simple measures such as a new winter coat, hot water bottles, gloves and mittens!

The grant is made possible by people who can afford to donate their government winter fuel payment to the scheme – all the information on that can be found here: <https://www.somersetcf.org.uk/winter> If you can afford to, please donate some or all of your Winter Fuel Payment to help support those living in fuel poverty. With your help, we can help them stay warm, safe and well.

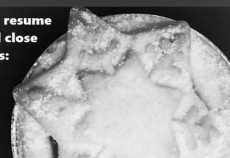
If you need help keeping you and your house/home warm and safe, please contact your local Village Agent. Call **01823 331 222** or complete the short form here and someone will be in touch: <https://somersetagents.org/agent-call-back/>

We don't want you to choose between heating or food, and your Village Agent can help with both. Please do get in touch.



Festive collections 2021-22

Usual collection day	Revised collection day	Usual collection day	Revised collection day
Friday 24 December	No change	Monday 3 January	Tuesday 4 January
Monday 27 December	Tuesday 28 December	Tuesday 4 January	Wednesday 5 January
Tuesday 28 December	Wednesday 29 December	Wednesday 5 January	Thursday 6 January
Wednesday 29 December	Thursday 30 December	Thursday 6 January	Friday 7 January
Thursday 30 December	Friday 31 December	Friday 7 January	Saturday 8 January
Friday 31 December	Sunday 2 January 2022	No garden waste pick-ups in festive fortnight, above. All collections resume from Monday 10 January. Recycle sites on usual schedules except all close Christmas Day, Boxing Day and New Year's Day. Extra site open days: Dulverton Monday 27 December, Crewkerne Tuesday 28 December	



Somerset Bus Partnership



Tony Reese (Co-Chair – Somerset Bus Partnership)

The future is suddenly starting to look a lot brighter for bus services in Somerset. Somerset County Council has responded to the Government's bus strategy and developed a highly ambitious bus service improvement plan and is asking for a £163 million government grant to achieve it. You can read the 184 page document that Somerset has submitted justifying this bid here: <https://www.somerset.gov.uk/roads-and-transport/transport-strategy> (the bus service document can be found under the National Bus Strategy Section).

Even if the full amount in the bid is not granted, it is a recognition that our bus services need major improvements. Transport is the biggest emitter of carbon emissions in the county, so we must make sure that Somerset pursues the initiatives outlined in the bus services plan that encourage a switch to public transport and away from private cars. This will reduce our carbon footprint.

Somerset Bus Partnership was set up so that the voices of bus users in the county could be heard. We have 80 representatives from all parts of the county, but no-one from Curry Rivel yet. Could you be our bus representative?

If you would like to get in contact drop us an email:

somersetbuspartnership@gmail.com or visit our website: [https://](https://www.somersetbuspartnership.co.uk)

www.somersetbuspartnership.co.uk



Enhancing your natural beauty

Dermal fillers to enhance and treat:

Lips • Jawline/Chin • Cheeks/Mid Face • Tear Trough • Non-surgical Rhinoplasty

Anti-wrinkle Treatment • Fat Dissolving • WOW Fusion • Dermaplaning
Chemical Peels • Skin Boosters • Medical Grade Skincare

SCALP MICROPIGMENTATION NOW AVAILABLE

www.thecountryclinic.co.uk

hello@thecountryclinic.co.uk

07540933393

Clinics held in Curry Rivel and Yeovil. Somerset

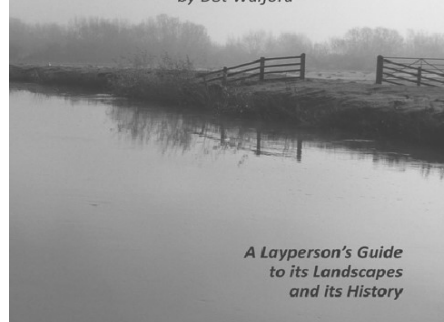


- A LOVELY CHRISTMAS GIFT -

Walkers & Bikers Explorers & Hikers

Somerset's 50 mile Parrett Trail

by Dot Walford



A Layperson's Guide
to its Landscapes
and its History

My little book is written as though I'm actually taking you with me along the 50 mile Parrett Trail. While it is not intended as a guide book, there are details of the route on geological maps plus, grid references of towns and villages visited en-route to the rear of the book. **There are pubs and cafés in most villages to help you plan your days.**

Maybe you could read the book as a story, or it could be a book to take with you, enabling you to read it before walking each section. It would then give you an idea of what there is to discover each day. I'm not a geologist by training but have spent many years walking the Parrett Trail, some as a guide, and have developed a deep interest in the geology, flora and fauna and the history of the area. I hope these notes will entice you to look at the countryside in a new way, to look further than just the views, pasturelands and buildings to see land formations and how they affect the way we live.

Another of my hopes is that you'll feel inspired to explore more of Somerset, the land of the Sumorsæte – the Summer Settlers – and the county I live in and love.

There's so much to discover!

Copies are available from local author Dot Walford email:

westcountrywalkingtrails@btinternet.com

St. Andrew's Church

To find out more please visit us at:
www.curryrivel.org.uk or
www.achurchnearyou.com



We warmly welcome visitors and new members of the community to any of our services and other events.

Covid effects

With regulations remaining as they have been for a while, St. Andrew's Church continues to be open to everyone daily. Also, 'live' services will stay relaxed, although use of face masks and sanigel are required in some circumstances - see the notice board in the porch. If local conditions dictate, short notice changes may be necessary. Therefore, please check the notice board in the churchyard by the Green, in the church porch, the village website or our 'A Church Near You' web page.

December

Thursday 2nd

10.00 **CR OSR** - Holy Communion BCP

Sunday 5th

10.00 **FH** - All Age Family Service
 (+ refreshments)

11.00 **FH** - Said Communion CW
 6.00 pm **CR** - Evening Worship

Monday 6th December

7.00 pm **CR** - Carols on the Green

Sunday 12th

9.30 **SW** - Holy Communion BCP

11.30 **CR** - Holy Communion CW

6.00 pm **FH** - Carol Service

Thursday 16th

10.00 **CR OSR** - Holy Communion BCP

Sunday 19th

9.30 **FH** - Holy Communion CW

6.00 pm **CR** - Carol Service

Tuesday 21st

7.00 pm **SW** - Carol Service

Scott's spot

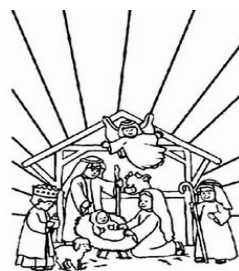
A crib with a twist

After time 'off duty' on sabbatical, I'm back! My thanks to those who contributed to this slot, during my absence. I enjoyed 'Sue's scribings', 'Patrick's ponderings' and Roger's writings'!

Back in August I shared some sabbatical plans. I managed most, including the Christmas project that involved both woodwork and writing. This took shape as a crib with a twist.

So what is it? Well, I've called it an 'Advent Manger' and its purpose is to point to something called the 'paradox of Christmas'. A paradox is something that is two opposite things at the same time (baked Alaska?!), and as we prepare to celebrate the birth of Jesus we see that He fits the bill. On the one hand Jesus is born as a human baby - one of the most vulnerable things on earth - and on the other, this infant would come to reveal Himself as God as a person.

The Advent Manger is about presenting this paradox in a hopefully clear and powerful new way.



December ctd.

Friday 24th - Christmas Eve

4.00 pm **CR** - Crib Service

4.00 pm **FH** - Crib Service

11.15 pm **CR** - Midnight Communion

Saturday 25th - Christmas Day

8.30 **SW** - Christmas

Communion BCP

10.30 **FH** - Family Christmas

Communion CW

Sunday 26th

10.00 **FH** - United Benefice

All Age Holy Communion CW

January 2022

Sunday 2nd

10.00 **FH** - in the Baptist Chapel

Combined All Age Family Service

11.00 **FH** - Said Communion CW

6.00 pm **CR** - Evening Prayer/Guest
 Service t.b.c.

CR = St. Andrew's Church, Curry Rivel

FH = St. Martin's Church, Fivehead

SW = St. Catherine's Church, Swell

Scott's Spot ctd. . .

Perhaps you enjoy counting down to Christmas with an Advent Calendar. As marketing departments have got in on the act, you can do so today with beauty products, toys, cheese (yes really) and of course chocolate. There are even some that still remind us of the Christmas story.

The Advent Manger develops this idea. Imagine a wooden model of a manger - an animal feeding trough - the sort of thing that Mary laid the infant Jesus in. Now picture lolly sticks numbered 1 to 25 all around the outside of the manger, sticks that as we count down to Christmas are turned over to reveal a Bible name of Jesus. The names chosen start right at the beginning of the Old Testament and take us through the Bible to the end of the New Testament. The idea is that as the explanations that go with those names are read, we land at Christmas Day, amazed at the astonishing gift that Christmas is really all about. My hope is that the Manger helps us see Jesus not just as 'the reason for the season', but, as the Bible presents Him, as pretty much the reason for everything, and therefore the reason to worship God afresh with love, joy, gratitude and grateful service.

I'd love to be able to offer everyone an Advent Manger of their own - mass production is the next challenge for this project. But if you would like a printed version for your Advent count-down this year, then I'd love to give you a copy. These will be available in our Benefice churches for you to pick up at your convenience, or from me directly. Please call to 'place your order' on 01458 251375. I'd be delighted to receive your thoughts and feedback in due course.

With every blessing for you and those you love this Christmas,

Revd. Scott

Soup and Seasonal Songs on 3rd December

It is much regretted that, for various reasons, in early November the decision had to be taken to cancel this event. We wish to thank all who had already expressed an interest to attend and we sincerely hope it can be staged in 2022.

The members of St. Andrew's Church and the United Reformed Church wish everyone in the Curry Rivel Parish and beyond a blessed Christmas and Happy New Year.



Carol singing

Monday 6th December 7.00 pm

The venue for this year's Carol singing will be the **Village Green**. Please join us in singing the seasonal Carols, accompanied by local musicians. Refreshments (mulled wine & mince pies) will be served afterwards, Covid circumstances permitting.



St. Andrew's Autumn Fayre

The sunshine on the morning of 30 October saw a steady stream of people visit the Old School Room — perhaps tempted to find an early Christmas gift among the many items for sale, or just to buy a tasty home made cake.

A total of nearly £ 700 was raised.

A sincere thank you to all who came and those who in any way contributed.



Autumn Fayre visitors in the OSR

St. Andrew's Rotas December

Brass - Sue Blackwell

Flowers

3rd & 10th - Advent

18th & onwards - Christmas flowers

Cleaning

3rd - Wendy Graves

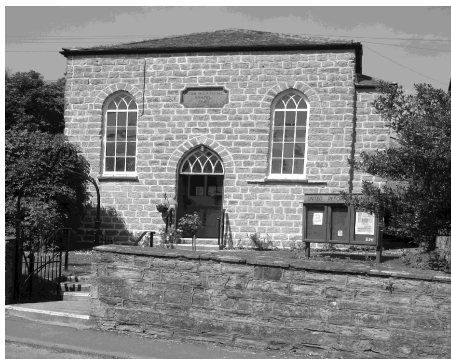
10th - Anne Geach

17th - Anne Gough

24th - Jackie & John de Ronde



United Reformed Church



December

Services start at 10.30 am, unless indicated otherwise

Sunday 5th - Carols at 4.00 pm

Sunday 12th - Mrs Jo Morling

Sunday 19th - Rev Tim Richards
(incl. Holy Communion)

Saturday 24th - Christmas Eve

At the time of going to print we plan to have a **Zoom** service at **8.00 pm**;

anyone wishing to join us please email richardstim@hotmail.com for details.

N.B. For Christmas Eve Service e-mail Rev. Tim - **NOT** Steve Beney.

Sunday 26th - No Service

Arrangements are provisional and may possibly change due to the fluctuating Covid situation. Changes will be advertised on the URC Notice board.

We are a small, inclusive, outward looking community and wherever you are on your life/spiritual journey we welcome you without regard to age, gender, denominational background, sexual orientation, race or ability.

To join any of our services -Zoom or livestreamed from the Chapel- please email Steve Beney at sbeney6@gmail.com

Minister: Rev. Tim Richards
01458 252799

Sunday 5th December at 4.00 pm

Supporting **ARCinspire** (formerly Taunton Association for the Homeless)

Shoebox Appeal

We invite you or your organisation to join us for our Carol Service at which shoeboxes filled with items for individuals supported by ARC will be collected, Carols sung and refreshments (including mulled wine & mince pies) enjoyed.

We would love you to bring a filled shoebox, but a monetary gift, if you prefer, will be used to support ARC's Christmas work.

If you are able to join us please let us know (and if you are an organisation an indication of numbers for the purposes of refreshment provision would be helpful). We invite you to provide us with a **Carol of your choice** too, to be included in our service. Reply to richardstim@hotmail.com or heartandhome@hotmail.co.uk

Mask wearing is encouraged

N.B. Should we need to cancel due to changes in the Covid situation, the Chapel will be open from 4 — 5pm on the 5th to receive donations of filled shoeboxes.

Help us Support those less advantaged this Christmas time.

What to include in your box:

Notepad & pen	Small 2022 diary
Christmas socks	Shower loofah
Toothpaste	Toothbrushes
Roll on deodorant	Shower gel
Shampoo	Sanitary products
Sweets/chocolate	

Extras if you can:

A torch, blankets, towels, thermals, travel mug with hot drink sachet, unisex hats & gloves.

You could even include a Christmas card in your box to wish the person receiving your gifts a happy Christmas.

If you choose to put your items in a shoebox and would like to wrap it, we ask that you please wrap the lid and the box separately, as every box must be checked before giving out to our clients for health and wellbeing reasons.

A **BIG THANK YOU** to everyone who has donated jewellery, watches and unwanted prescription glasses to Orchard View — some I have been able to thank personally but to those who have anonymously left bags outside the door, or popped items into the letterbox when no one has been at home, **THANK YOU so VERY MUCH!!**

All about the Parish Council

Tony Greenaway

What is a Parish Council?

All parish councils are statutory bodies. Their existence is due to a "statute" (a law passed by government). The way they are constituted, how meetings are run and what they can make decisions about are all defined in law.

What can the PC do?

Some of the areas which parish councils can be involved in include: cemetery provision or contribution to churchyard maintenance, entertainments provision, rights of way, provision of public halls, allotment provision, playing field provision, erection of signs announcing village name or amenity, provision of bus shelters, public lavatories and maintenance of roadside verges. Local parish councils also work closely with the district council, in particular making the views of the village known on district-provided services such as planning control, road maintenance, waste collection, etc. Curry Rivel falls within South Somerset District Council (SSDC) – they break their district down into several areas and we are within "Area North".

How is the PC funded?

Parish councils draw their funds from the council tax paid by residents of the parish. A small portion of the council tax goes to the PC. These funds are known as the precept. Parish councils must hold insurance, have a paid clerk and pay for their accounts to be audited – all paid from the precept. What remains of the precept can be used to fund local amenities which fall into the categories listed above, or within strict financial limits. They can also spend on anything which will be, in the PC's opinion, in the interests of the parish. In practice, Curry Rivel tries to keep its precept as low as practically possible which means that there are only limited funds available to spend on specific projects. Projects are usually funded by applying for grant money from a variety of sources (e.g. the lottery, SSDC, various government departments, etc.) each of which have their own funding criteria.

Who can be a Parish Councillor?

A person is qualified to be elected and to be a councillor if they are a British, Commonwealth, Irish or European Union citizen and on the relevant day (that is, the day of nomination and election) they are 18 or over. In addition, the person must meet at least one of the following criteria:

- on the relevant day and thereafter they continue to be on the electoral register for the parish, or
- during the whole of the twelve months before that day they have owned or tenanted land or premises in the parish, or
- during the whole of the twelve months before that day their principal or only place of work has been in the parish, or
- during the whole of the twelve months before that day

they have resided in the parish or within three miles of it.

Except for qualification (1), these qualifications then continue for the full term of office, until the next ordinary elections. Certain people are disqualified from standing, and these include paid officers (including the Clerks) of the council, bankrupts and those subject to recent sentences of imprisonment.

Parish councillors are volunteers, working on behalf of the parish without remuneration. The Curry Rivel Parish Council consists of 9 councillors and occasional vacancies are usually filled by "co-opting" a new member as and when someone is found who is willing to become a councillor.

PC elections are held every four years (the last one was in 2019). If more people put their name forward than there are vacancies, or if ten or more parishioners request an election, then councillors are appointed by election.

What happens at a meeting?

By statute, PC meetings must be held in public. The chairman leads the meeting ensuring that all items on the agenda are given an adequate amount of time for discussion. Proposals are made and then appropriate councillors vote to decide on a course of action.

There is usually time at the beginning of the meeting for any member of the public to speak – this is your opportunity to raise any concerns to the PC or provide feedback on any issues relating to the PC's work.

Thereafter the public is there to witness the PC at work – although sometimes the chairman may invite comment from the public at others points in the meeting. All agendas and minutes of the PC must be publicly displayed, full minutes and agendas of meetings are displayed on the parish noticeboards by the One Stop shop and outside the Village Hall, they are also made available on the Curry Rivel Community website.

When does the PC Meet?

The PC meets in the Old School Room at the junction of Butts Lane and Church Street on the first Thursday of each month. These meetings start at 7.30pm and are open to the public. Minutes prior to these dates can be sought from the clerk.

The Annual Parish Meeting

An annual parish meeting must be held before the 1st June and it is a wonderful opportunity to hear about everything going on within the parish. This is not a meeting of the council but a meeting of the parish itself (i.e. everyone who lives in the parish). At this meeting, the chairman of the parish council gives a presentation on what the council has achieved over the last year and representatives from local groups and businesses are invited to give a short talk about their achievements and activities and there is normally a guest speaker as well.

The Parish Council clerk and responsible officer is Lydia Mason

Working Hours are Monday 9am – 5.30pm, Thursday 9am – 1pm, Friday 9am – 1pm

Email: curryrivelparish@outlook.com Tel: 07714 510828.

Correspondence only to:

The Clerk, Curry Rivel Parish Council, Greystones, Churchway, Curry Rivel. TA10 0EE

WARNING

All the below events are subject to cancellation at short notice due to the Corona virus epidemic please contact each group for details.....Keep well, Keep safe



...In December

Regular Events

MONDAY

9.45	Art Club	Village Hall
10.00	Table Tennis (kevlou@outlook.com)	Village Hall
6.00	Pilates	Primary School
6.45	Explorer Scouts	Scout Hall, Langport

TUESDAY

10.00	Craft & Coffee (2nd only)	Old School Room
10.00	Keep Fit (nicky.barker1@btinternet.com)	Village Hall
2.30	Forget-Me-Not-Café	Village Hall
5.45	Pilates	Primary School
6.00	Cub Pack	Scout Hall, Langport
6.30	Guides	URC Hall
6.30	Langport Youth Club	Ridge way Hall
7.00	Short Mat Bowls	Village Hall
7.30	Sedgemoor Garden Club (2nd only)	All Saints Hall L'port

WEDNESDAY

9.30	Mother and Baby Group	Village Hall
6.30	Cycling Club	Bridge Cafe
6.30	Line Dancing Classes	Village Hall
6.45	Scouts	Scout Hall, Langport
7.30	Bell Ringing	St. Andrews

THURSDAY

10.00	WI	Village Hall
2.00	Short Mat Bowls	Village Hall
7.30	Parish Council (1st only)	Village Hall

FRIDAY

9.30-2	Get Together Club	Village Hall
7.30	Movie Night	Village Hall

SATURDAY

9.00	Cycling Club	Bridge Cafe
------	--------------	-------------

Some Useful Telephone Numbers

Youth Organisations

Beavers, Cubs, Scouts	(gslthelevelsscouts@gmail.com)
Rainbows	01823 698940
Brownies	251953
Guides	252901
Langport Youth Club	0793 899 338

Sports Clubs

Short Mat Bowls Club	251201
Cricket Club	01823 698849 & 01458 252791

Social

Flower Show	250311
Out & About	252146
Royal British Legion	01460 281115
Twinning Association	01460 281905
Women's Institute	253078
Rotary Club of Langport & Somerton	252813
PROBUS	252545
Sedgemoor Garden Club	250091
Heale Lane Allotment Association	741880
Curry Rivel in Bloom	762296
Get Together Club	252791
Health Walks	250725
Mother and Baby	07732 197030
Forget-Me-Not-Café	252710 & 396123
Inner Wheel	251940

Arts

Entertainers	250311
Music Club	250863
Dancing Classes	07730 755203
Art Club	253126

Community Facilities

Food Bank (help@curryrivel.org.uk)	0771 6792760
Village Hall (crvhbookings@gmail.com)	741606
Old School Room Bookings (crosrbookings@gmail.com)	250655/253856

United Reformed Church Hall - Bookings etc. 259391

Community Services

Doctors	250464
Police	101
Yarlington Housing	01935 404500
Footpath & Litter Warden	johncasebourne@sky.com

Education

Little Pips	252822
Primary School	251404
Huish Episcopi Academy	250501
Huish Episcopi Leisure Centre	251055

Local Authorities

Parish Council (Clerk) curryrivelparish@outlook.com	07714 510828
District Council	0 1935 462462
County Council	0300 123 2224

Religious

Church of England Rector	251375
Churchwarden	259003
Secretary PCC	251355
Organist & Bell Ringing	253856
Flower Guild	252710
Roman Catholic Church, Somerton	274008
URC Minister	252799

Deadlines for January Edition

Advertising: 5pm Thursday 2nd December
Send to: crn.nigel@outlook.com

Comments & Articles: 5pm Tuesday 7th December
Send to: curryrivelnews@gmail.com

The Curry Rivel News is published monthly by the
Curry Rivel News Group and is delivered free to households within the Parish.

Editor	Jane Hamlin	252946
	curryrivelnews@gmail.com	
Advertising	Nigel Grinsted	07734226000
	crn.nigel@outlook.com	
Treasurer	Rob Atkins	253008
	crntreasurer@yeatesatkins.co.uk	
Publishers	Mike Davis / Richard Wilkins	252554
	crnpub@gmail.com	
Distribution Manager	Hazel Morris	
	hazelmorris200@gmail.com	
Secretary	Natalie Gunter	
	crngsecretary@gmail.com	
Staff Photographer	Mike Mason	252076
Church Pages	John de Ronde	251355
	johnderonde51@hotmail.com	

Pick up your Prescription from the Post Office

Do you pick up repeat prescriptions from Langport surgery? If so you can request your medicine to be delivered to Curry Rivel Post Office in the BP petrol station. When you reorder, simply ask for delivery to Curry Rivel PO (including reorders on the surgery website). The surgery delivers to the Post Office every Tuesday and Friday. And while you're in the Post Office you can pick up a cappuccino too!

Highlights of the Somerton u3a Holiday in the Isle of Man

In the first week of October, 29 members of the Travel group of Somerton u3a, including 6 Curry Rivel residents, flew to the Isle of Man for an action-packed 5 day holiday.

The first day was spent exploring the island's fine Victorian examples of industrial and transport heritage. To reach the Lady Isabella waterwheel, the largest in the world, which was used to pump the water from the zinc mines, the group travelled on the Manx Electric Railway.

There were fabulous views from the top of the waterwheel for those brave enough to climb the narrow spiral steps to the windy platform on top.

To reach the summit of Snaefell the group boarded the Snaefell Mountain Railway, which has been running since 1895 and was constructed in only 7 months.

On a clear day there are impressive views across the Irish Sea to Scotland, Ireland, Wales and England. Unfortunately on the day the group visited, visibility was very limited and everyone's attention was spent keeping upright in 50mph plus winds. The café on the summit was a very welcome refuge for a reviving cup of tea and a piece of cake.



The Manx Electric Railway



The group standing in front of Tynwald Hill, an ancient site that still plays an important part in the governance of the Isle of Man.



The Laxey Waterwheel



Snaefell Mountain Railway.