



PUBLISHED MONTHLY AND DISTRIBUTED FREE TO ALL CURRY RIVEL RESIDENTS; ALSO AVAILABLE IN VARIOUS OUTLETS AROUND CURRY RIVEL

## The Land to the East of Linton House

*Derek Yeomans – Chairman of the Parish Council*



**It can hardly have escaped anybody's notice that the long line of Leylandiae conifers abutting the A378 west of Parsonage Place that had been growing there for about thirteen years have been felled, stripped of their foliage and removed with only two or three feet of their trunks remaining above ground. These stumps will be pulled or grubbed out in the near future.**

What is the rationale for this destruction of vibrant growing trees so quickly consuming CO<sub>2</sub> contrary to the current green agenda? An explanation is very necessary, and the following narrative provides a detailed explanation for the apparent 'vandalism'.

The large field now exposed by the removal of the trees is a sloping grass covered field that was the delightful green centre of the village. Prior to the planting of the trees it was previously mown, but now with the trees gone it can be seen to have reverted to natural uncontrolled growth.

On the 6<sup>th</sup> of March 2017, an Outline Planning Application was made to South Somerset District Council (SSDC) Planning Department for permission to build 8 dwellings with attached garages in the northern area of the field, and connect this development to the A378, the main road through the village, with a residential road emerging at a right angle onto that highway.

Because this was a development essentially on open countryside, (which was not allowed except in exceptional circumstances under the Local Development Plan and also because of the dangers presented by the siting of the entry road onto the hugely heavily used A378), the South Somerset District Council (SSDC) would not consider this application until the Applicant agreed to the imposition of a special mitigation clause called a S106. The S106 is designed to recompense the SSDC and the local inhabitants with either monetary contributions or other ways of mitigating the resultant loss of space, congestion of roads or loss of visual amenity arising from a new development.

The site in question lies behind the long ancient crumbling blue lias stone wall which contains an earth level which is about a metre higher than the level of the narrow pavement in front of it, which runs alongside the A378 for its entire length. SSDC were very concerned about the junction of the estate road with the A378, because the traffic travelling along that road in either direction could not be adequately seen by anyone in a vehicle emerging from that junction.

*...continued on page 2 .....*



## The Land to the East of Linton House.... *continued*

Therefore, it was necessary that the Highways Department in the County Council impose a requirement that this wall should be moved back and splayed in both directions so that all vehicles leaving the site could be clearly seen by all vehicles transiting the A378, and at the same time no leaving vehicle needed to be physically on the A378 in order to see that it was clear and safe to join that road. This required considerable time to negotiate with the Applicant, because the Planning Department in SSDC had major staffing deficiencies, as did the County Council. In addition the S106 required that the frontal southern end of the field should not in the future be subject to any development in order to preserve the previous visual aspect of the site as far as possible, and that if approved the new housing complex should be partially hidden from the road by a stone or brick wall with only an opening in it for the estate road access, thus dividing it from the southern undeveloped section of the historic field.

It was suggested by the Applicant that, in compliance with the S106, the southern portion of the land should be gifted to the Parish Council (PC) once the last dwelling was nearing completion. To this end the Applicant and his Agent attended the PC on several occasions in 2018 to make this offer, and under a previous Chairman, an agreement in principle for acceptance was voted for by the Council.

It has to be said that there were some matters of concern about the ultimate full acceptance of the offer, which rested on a legal agreement to be reached in the future covering the responsibilities of both the Applicant and the PC in respect to both the conditions and facilities allowable and provided on and surrounding the potentially gifted land. These included a 1.5 metre transverse path across the site, the addition of two pedestrian entrances to the site, one sloping and the other with steps that had already been triggered by the S106.

Following this there was a long hiatus due to the absence of

adequate planners, the pandemic and lockdowns, diversions of council staff to other duties, working from home along with self-isolation, which virtually stopped any progress until very recently, when the undertakings for the gifted land, (i.e. what the Parish Council would be obligated to maintain, undertake, and what structures would be provided and maintained by the Applicant) were fully discussed at a working group meeting with the Applicant held on the 7th July this year.

Following these detailed discussions of what are known as Heads of Terms (HOTs), a clearer way forward emerged, culminating in a full Parish Council question and answer session with the Applicant on the 5th of August this year where a final decision by a named vote was required. The named vote resulted in 4 votes for acceptance and 4 votes for rejection of the land gift, and I had to use my casting vote in favour of acceptance. Therefore, the PC will now own the land, if and when, the outline planning permission is granted and the various contentious points in the HOTs, which are now nearly fully mutually agreed, are made legally binding on both sides.

The removal of the trees was a sad necessity but an essential first step in a very long and complex process. Therefore, it is now a case of "watching this space"



## Resignation of Simon Scarborough from the Parish Council

*Derek Yeomans – Chairman, Curry Rivel Parish Council*

**S**adly, Simon has decided that as he is moving to Long Sutton he can no longer remain a Parish Councillor for this Parish. He has done an enormous amount of work for the Parish over his time on the Council by his initiatives of installing the speed indication devices (SIDs), overseeing their capability, repair and battery upkeep, setting up the Estate Management Group in the Council to monitor and undertake possible solutions for present problems and ideas for future improvements. His hard work and ability will be hugely missed, and the entire Council wishes him and his wife all happiness in their new home.



## District Council News

*Tiffany Osborne and Clare Paul*

**A**s you will be aware Somerset will become a Unitary Authority in 2023 and as such there will be changes taking place over the next 18 months involving elections and shifts of authority. In May 2022 a shadow council of 100 members will be elected and will run concurrently with the five district councils until May 2023 when the shadow council will then assume executive authority and the five district councils will cease to exist. It is expected there will be 100 members elected to the shadow council. Currently, between all the district councils there are 650 members. Therefore, the share of divisions/wards for the newly elected councillors will be much greater than it is at present.

We have all been witnessing the grave situation unfolding in Afghanistan and Somerset is ready to help with the national effort to support those fleeing from the Taliban takeover. How can you help? There is a Government's Help Refugee Campaign website which provides practical information and guidance on support, donation of goods, services, community sponsorship and how to volunteer –

[www.helprefugees.campaign.gov.uk](http://www.helprefugees.campaign.gov.uk). If you are a private landlord with self-contained accommodation please contact [resettlement@somerset.gov.uk](mailto:resettlement@somerset.gov.uk). Langport Area Refugee Action (LARA) also has a Facebook page detailing how to support and make a difference.

We are pleased to report that the garden recycling programme is now back up and running after a temporary hiatus to focus on the waste collection during the summer due to covid-19 hit staff shortages. We are aware there are few residents who are still not receiving their recycling collections and we are in touch with Somerset Waste Partnership and hope to get this matter sorted shortly.

Full Council meetings remain in hybrid format with members either participating via Zoom or in person. Area North meetings continue to be held remotely.

**Saturday 30 October 10.00-12.30**

***St. Andrew's Autumn Fayre in the  
Old School Room (stalls) & Church  
(refreshments).***

See page 13 for details

## D.D.I.Y

### Don't Do It Yourself!

Do you have any work to do in or around our property that you can't or don't want to do? If so, we could do it for you.

We are a husband and wife team with over 30 years of home improvement, refurbishment and maintenance experience.

- Free Estimates
- Reliable
- Personable
- Clean & Tidy

**Contact Roy or Debbie**

**01458 762604 or**

**07920 192471**

Find us on Facebook

DDIY Don't-Do-It-Yourself

## PRIME PLUMBING

- Qualified to provide plumbing and related electrical services.
- Specialist in kitchen and bathroom planning and installation.
- Tiling, plastering and flooring work undertaken.
- Will also investigate and repair plumbing and related electrical problems.
- Advice and estimates provided free of charge.
- No VAT charges.



For any work required, please contact

**Richard Ovenden, Prime Plumbing**

on **07800 543795** or e mail: [prime.plumbing@btinternet.com](mailto:prime.plumbing@btinternet.com)



We're local, we're friendly and we're here to help. We stock a wide variety of meats including Game, Homemade pies, pasties, scotch eggs and faggots. And a wide selection of local cheeses and local seasonal veg.

6 Parrett Close, Langport, TA10 9PG

Tel: 01458 250778

Mon-Fri 7am—5pm

Sat 7am—4pm



# The Entertainers are back! ...Oh yes they are!

Kim Huntley

**A**s we begin to get back to some normality, the doors have finally reopened to the pantomime world. Curry Rivel Entertainers are back on track to entertain you with their panto in February Half term 2022!

Faces old and new have been working behind the scenes to get the ball rolling and this begins with an open evening on Monday 11<sup>th</sup> October at 7:30pm in the Old School Room.

We are looking for members of all ages to join our cast as well as crew for the many tasks behind the scenes.

If you feel like you can sing a tune, remember a script (well sort of!), have an artistic eye for props or have the muscles for moving some scenery we would love to meet you! Come along on the 11<sup>th</sup> or call our Chairman Anne Hembrow (01458 250311) or Liz Hembrow (07534141375)

Look out for our Facebook group, Curry Rivel Entertainers for updates too!

See you there!



- Trees & Hedges
- Dry-Stone Walls & Features (DSWA Professionals)
- Lime Mortar Walls & Pointing
- Gardening & Landscaping
- Fencing

Telephone: 01458 250 819  
Mobile: 07765 518168

**Sticks & Stones**

Emrys Evans & Denise Evans

**SOMERTON u3a**



As with last year, enrolment will not be carried out face to face.

Payment is by cheque made out to Somerton u3a, or by Bank Transfer to Account No: 82483286 Sort Code: 09 01 53 giving your name as a reference.

Cash will not be accepted.

If you are applying for new membership there is a form available to download from the website. Click on Links.

<https://u3asites.org.uk/files/s/somerton/docs/newmembershipform2122.pdf>

You can also email Marilyn at [membership@SomertonU3A.UK](mailto:membership@SomertonU3A.UK) or call her on 01458 899773 to request a form.

## Wiltown Garage

Wiltown, Curry Rivel TA10 0JF  
Mon-Fri 8am to 6pm  
Saturday 8am to 12pm  
[www.wiltowngarage.com](http://www.wiltowngarage.com)



**MOT**  
Test Centre

- ◆ Batteries
- ◆ Exhausts
- ◆ Clutches
- ◆ Tyres

Vehicle Servicing & Repairs  
Air Conditioning Servicing  
Breakdown Recovery Service  
Car Valeting Inside & Out  
Body Repairs & Car Sales

Phone **01458 252 166**  
Mobile **07921 788 169**

We can service your **NEW CAR** and it **WON'T AFFECT** The Manufacturer's **WARRANTY**. Ask us for details



## A C FENCING

FENCING - GATES - SHEDS - REPAIRS  
SECURITY FENCING - STOCK FENCING

**07470 286765**

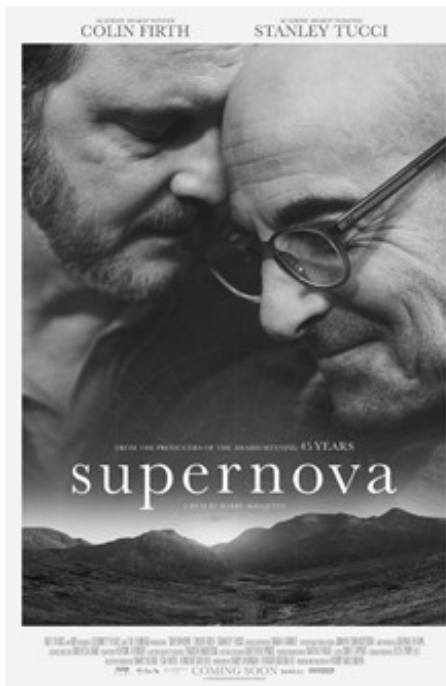
[ac-fencing@outlook.com](mailto:ac-fencing@outlook.com)



## Movies in the Village Hall

[mvh.curry.wix.com/films](http://mvh.curry.wix.com/films)

### Supernova (15)



**Friday 15 October**

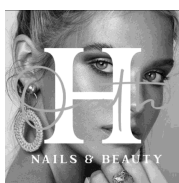
A romantic drama telling the story of Sam and Tusker, partners of 20 years, who are travelling across England to the Lake District in their camper van, visiting friends, family and places from their past. However, Tusker has been diagnosed with early onset dementia and so their time together is precious.

Stars: Colin Firth, Stanley Tucci and Pippa Haywood.

Doors open at 7.00pm; show starts at 7.30pm in the Village Hall. Tickets £7 are available at the door.

Please note, we are aiming to run this event as "normally" as possible, but we would request that you sign in with your contact details / use the QR code posters on arrival. We would also ask that you wear a mask when moving around the Village Hall.

*Alison Cockrell*



### Oath Hill Nails & Beauty

#### NAILS

File, Shape & Polish...Gel Manicure  
Gel Removal...Nail Repair...Nail Art  
Encapsulation...Acrylics...Infills  
Acrylic Overlays...Acrylic Removals

#### FEET

Express Pedicure...Full Pedicure  
Luxury Spa Pedicure

#### WAXING

Eyebrow Wax & Tint...Lip Wax  
Half Leg...Full Leg...Under Arm  
Chest, Shoulders & Back  
Basic Bikini Wax

#### LASH LOVE

Infills based upon two week top-up  
Lash Extensions...Natural Lash Tint  
Lash Lift & Tint

#### FACIALS

Mini, Standard & Luxury Facial

#### MASSAGE

Swedish Massage (Full/Half Hour)  
Hot Stone Massage (Full/Half Hour)

You can find us at the bottom of  
Red Hill, Curry Rivel:  
Oath Hill Barn, TA7 0JP  
Tel: 07837 283884  
Email: [amyhope86@icloud.com](mailto:amyhope86@icloud.com)

## Driver Training

We specialise in:

- Trailer towing
- LGV & PCV tuition
- Test preparation
- Confidence building

We have excellent pass  
rates due to our  
considerable Experience

You can use your  
vehicle or ours

01458 250384

07815 121548

[info@yeovildrivertraining.co.uk](mailto:info@yeovildrivertraining.co.uk)

**Yeovil  
Driver Training**  
[www.yeovildrivertraining.co.uk](http://www.yeovildrivertraining.co.uk)

## From Brekky to Brunch to Lunch to Tea to Dinner We're here 4U

We're open seven days a week  
serving food every day

Covered heated garden terrace -  
great for cyclists, walkers and dogs

Weekdays we open at 10am serving

- Somerset Roasted Coffee
- Freshly Baked Pastries
- Lovely Cakes
- Eat In or Take Away

Weekday Lunch from £6.50

Weekend Brunch 9am-11.30am

Make it bottomless at 10am for  
endless Prosecco!

Somerset Afternoon Creams

Serving Saturday 12pm & 2.30pm  
pre booking only

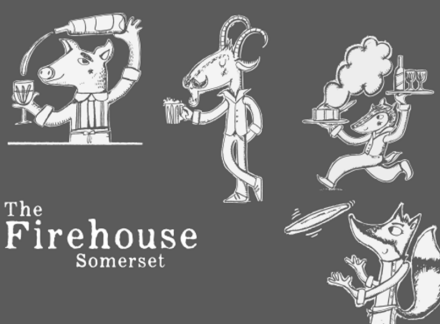
Full Take Away Menu

Available at lunchtime & evening

[www.thefirehousesomerset.co.uk](http://www.thefirehousesomerset.co.uk)

01458 887447

[hello@thefirehousesomerset.co.uk](mailto:hello@thefirehousesomerset.co.uk)



# Letters to the Editor

Dear Jane

I must congratulate you on the September edition of the Curry Rivel News and the extremely important articles in it. All of them are extremely relevant to the current exponential destruction of our planet by greed, stupidity and lack of prompt and determined action to do what is vitally necessary however controversial and politically sensitive it may be. Hosting conferences in Glasgow in October will undoubtedly result in many specious undertakings being made by the attendees that will never take place or not until far too late. I think there is now a general recognition that we are beyond the limits to stop climate change happening, but can only try, by taking immediate action, to lower the steepness of the exponential upwards curve leading to the effective end of all life on this planet. When the Government reduced its Oversea Aid budget from 0.7 % to 0.5% of GDP (gross domestic product) it was basically the income of the entire Country, It reduced the contribution contained within this package for world-wide contraception by 85%. The current human population of the world is approaching 7.9 billion and is increasing daily by over a 100.000 and so far this year by over 55 million. These figures are from Google @ Word Meter Current. Therefore, a current Governmental initiative to increase the financial contribution for contraception world wide has to be welcomed effectively recognising as it does that the sole cause of climate change is the exponential uncontrolled growth of the human population.

Meanwhile, the worldwide continuing and increasing destruction of jungles, rainforests, habitats; the poisoning and pollution of rivers and oceans

Dear editor,

It is great to see that the Curry Rivel gateway sign on the Langport end of the village has been replaced. Not only does it smarten up the look of the village but it's a great improvement on the previous carbuncle of a sign, it's lettering is much clearer with a better font and it fits the signs correctly. Let's hope the other awful signs are replaced soon.

Yours expectantly,

Richard Wilkins



by chemicals and plastics; the killing of all kinds of wildlife on land and in the seas to provide "bushmeat", expensive foods or spurious medicinal or sexual potions and the over fishing of all seas, both pelagic and now increasingly deep sea, resulting in the removal of very slow breeding and previously unrecorded species which will cause their irreplaceable extinction; mining the seabed for minerals, thus destroying millions of years old volcanic vents (black smokers) which are in themselves ancient vibrant specific living habitats and add essential minerals to the sea waters, continues unabated. The list of the damage being done is almost endless, and all of it is triggered by human need and greed.

I hope the articles you published will trigger some serious thoughts by everybody, especially children growing up now, who will in the not too distant future be facing the full consequences and ramifications of the past and present generations complete lack of concern for the unique universally and integrally interconnected fauna and flora habitat in which we currently have the privilege of living.

Yours, Derek Yeomans



- CARPETS & VINYL
- WOOD & LVT
- BLINDS & SHUTTERS
- DOMESTIC & COMMERCIAL

THE OLD POST OFFICE,  
38 NORTH STREET,  
LANGPORT,  
TA10 9RH

T: 01458 887301 E: [langport@sjhcarpets.co.uk](mailto:langport@sjhcarpets.co.uk) W: [www.sjhcarpets.co.uk](http://www.sjhcarpets.co.uk)  
MONDAY-FRIDAY: 9-5 SATURDAY: 9-1

Also at Tythings Commercial Centre, Wincanton & High Street, Tisbury

## Curry Rivel Village Hall ...200 Club

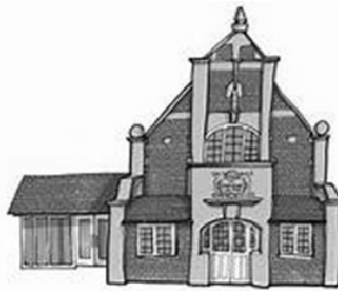
Hazel Morris 755203.

**T**he Village Hall is now fully open and nearly all regular events are taking place again. Table Tennis, Keep Fit, Line Dancing and Pilates, to name a few, are all back (although do check with the activity leader before turning up to check times, space etc). The What's On page in this publication will have contact details and the Curry Rivel Village Website will have more details of the activities going on at both the Village Hall and other venues in the village.

The 200 Club members continue to support the hall and we're pleased to announce the winners of the Summer 2021 draw.

### Congratulations to:

1st	George Tucker	£120
2nd	Maurice Powell	£75
3rd	Laurence Whitlock	£60
4th	Mr D Yeomans	£40
5th	Melvyn Harding	£28
6th	Mrs A Head	£20
7th	Jo Cave	£17
8th	Audrey Powell	£15
9 <sup>th</sup>	Penny Crook	£12.50
10 <sup>th</sup>	Peter Goodenough	£10
11 <sup>th</sup>	Lyn Comley	£10
12 <sup>th</sup>	Carolyn Paton	£10
13 <sup>th</sup>	Chris Hampton	£10



This draw raised £455 for the upkeep of the Village Hall and we would like to thank all members of the 200 Club for their support. The next draw will be held at the Christmas Big Breakfast – watch this space for more announcements nearer the time. If you would like the opportunity to win one of these amazing prizes in the next draw, please contact Hazel on 07730 755203.

## Wood Drove Kennels & Cattery

A family run 'home from home' in Langport for your dogs and cats, with plenty of space and cuddles!



Viewings by prior appointment

Tue, Fri & Sat at  
2pm  
01458 250556

[www.wooddrovekennelsandcattery.co.uk](http://www.wooddrovekennelsandcattery.co.uk)

## Clean as a whistle!

We can clean anything in your property.

Inside and out, including:

- Windows
- Gutters and downpipes
- Facias, soffits and frames
- Conservatories including roofs
- Solar panels
- Patios, pavements and drives
- Greenhouses
- Carpets

Just contact us to discuss your needs:

Tel: 01823 690154

Mob: 07590 636079

E: [kevin@bawdencleaning.co.uk](mailto:kevin@bawdencleaning.co.uk)

**BAWDEN**  
**CLEANING SERVICES LIMITED**  
Established 1982

## Forsey and Son

ESTABLISHED 1946  
INDEPENDENT FAMILY FUNERAL DIRECTORS  
MEMORIAL MASONS • PRE PAYMENT PLANS

Pound Pool, Somerton, Somerset TA11 6LZ  
Telephone 01458 272297 or Langport 01458 250509

28 High Street, Burleigh, Glastonbury, Somerset BA6 8SY  
Telephone 01458 850654

Willowfields, Lowside Lane, Glastonbury, Somerset BA6 9GY  
Telephone 01458 831020



[www.forseyandson.co.uk](http://www.forseyandson.co.uk)



## Bow House Physiotherapy Practice

Stacey's Court Car Park  
Bow Street  
Langport TA10 9PQ  
01458 253388

### Chartered Physiotherapists

Also available:-

Foot Health and Orthotics, Massage  
Therapy, Homeopathy,  
Occupational Therapy, Acupuncture, Bowen,  
Reflexology, Hopi Ear Candles, Pilates  
Classes.

[www.bowhousephysiotherapy.co.uk](http://www.bowhousephysiotherapy.co.uk)  
[info@bowhousephysiotherapy.co.uk](mailto:info@bowhousephysiotherapy.co.uk)

## Peppard S

Funeral Directors

Chapel of  
Rest  
Townsend  
Curry Rivel



Bow House  
Bow Street  
Langport

**01458 252505**

Memorial Masonry Service



Golden Charter  
Funeral Plans



# Children's Page



# Just For KIDS

## The Paralympics

### History of the Paralympics

On 29 July 1948, the day of the Opening Ceremony of the London 1948 Olympic Games, Dr Guttman organised the first competition for wheelchair athletes which he named the Stoke Mandeville Games, a milestone in Paralympic history. They involved 16 injured service personnel, 14 men and 2 women who competed in archery. There were two teams, a team of patients from Stoke Mandeville and a team from the Royal Star and Garter Home in Richmond, Surrey (where a special paraplegic ward had been established in conjunction with Dr Guttman). The Royal Star and Garter team won these inaugural games.

In 1952 Dutch veterans travelled to Mandeville to participate in the first International Stoke Mandeville Games.

In 1956 the Games were affiliated with the International Olympic Committee and were awarded the Fearnley Cup. USA, Australia, Pakistan, Israel, South Africa and Malaya were among the 18 countries competing in the international games.

The 9th annual International Stoke Mandeville Games were held in Rome, Italy - the first time the event was held away from Stoke Mandeville.

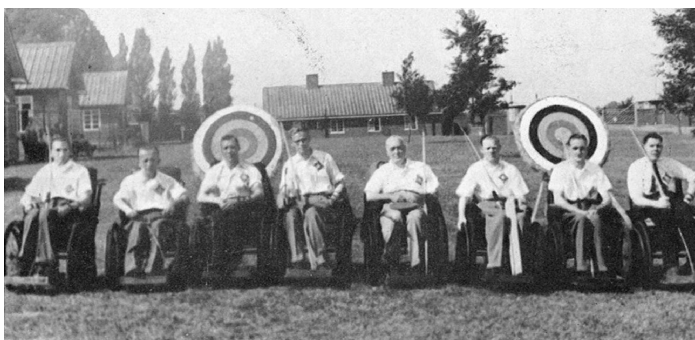
Now regarded as the Rome 1960 Paralympic Games, the competition took place six days after the Closing Ceremony of the XVII Olympic Games.

The Games involved 400 Para athletes from 23 countries who competed in 57 medal events across eight sports.

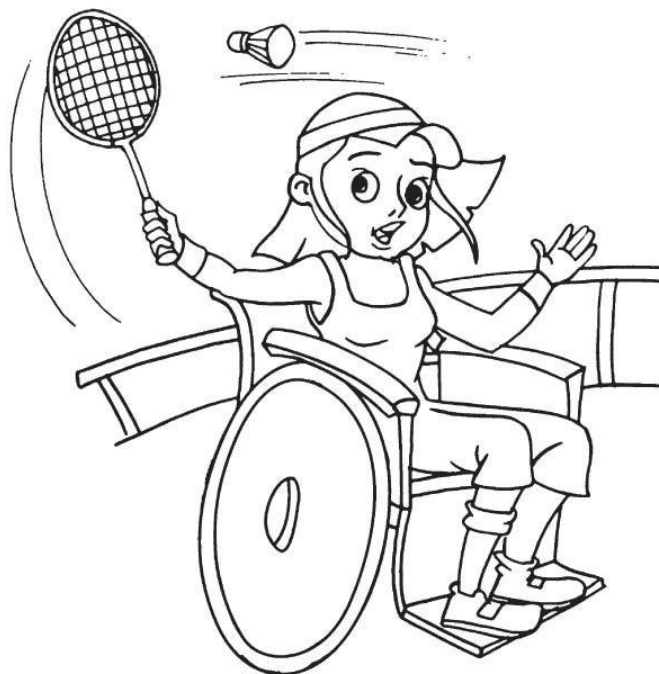
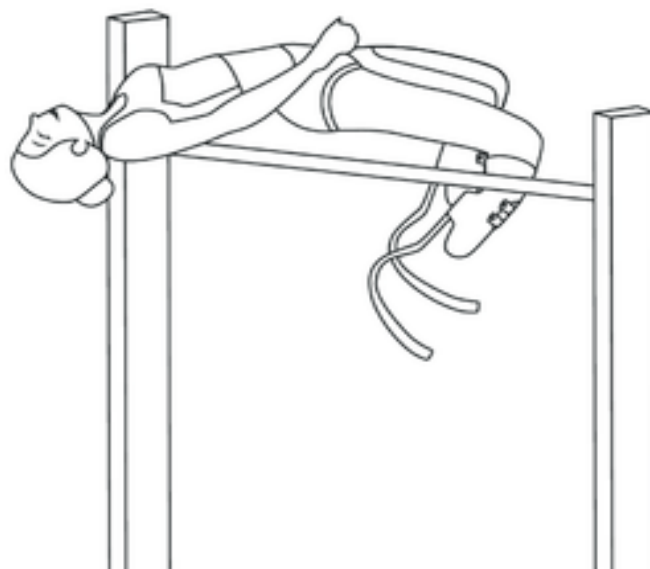
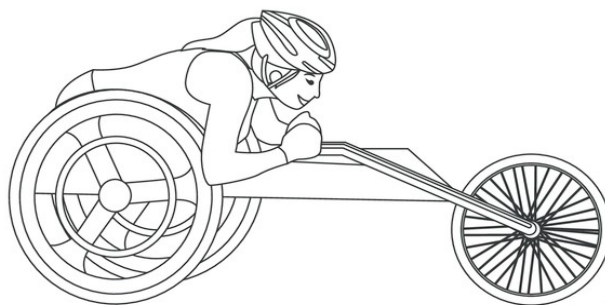
The Great Britain team of 29 men and 13 women finished second behind Italy in the medal table, winning 20 gold, 15 silver and 20 bronze medals.

Margaret Maughan, a Stoke Mandeville patient, was the first British gold medal winner. Since then over 2,000 athletes have had the honour of representing Great Britain at a Paralympic Games.

The Stoke Mandeville Games for the paralyzed, held on the grounds of a hospital that treated injured war veterans. The games were the brainchild of Dr. Ludwig Guttman.



Add some colour to these pictures



# Children's Page



# Just For KIDS

## The Paralympics British Gold Medal Winners Tokyo 2020



**Maisie Summers-Newton**

**Sir Lee Pearson** — equestrian, championship individual freestyle test, grade II

**Sir Lee Pearson, Natasha Baker, Sophie Wells** — equestrian, team test to music

**Christopher Skelley** — judo, men's B2 100kg

**Laurence Whiteley, Lauren Rowles** — rowing, PR2 mixed double sculls - PR2Mix2x

**Ellen Buttrick, Giedre Rakauskaitė, James Fox, Oliver Stanhope, Erin Kennedy** — rowing, PR3 mixed coxed four - PR3Mix4+

**Reece Dunn** — swimming, men's SM14 200m individual medley

**Dame Sarah Storey** — cycling (track), C5 3000m individual pursuit

**Jaco van Gass** — cycling (track), men's C3 3000m individual pursuit

**Tully Kearney** — swimming, women's S5 100m freestyle

**Maisie Summers-Newton** — swimming, women's SM6 200m individual medley

**Sir Lee Pearson** — equestrian, championship individual test, grade II

**Piers Gilliver** — wheelchair fencing, men's épée individual, category A

**Kadeena Cox** — cycling (track), women's C4-5 500m time trial



**Jody Cundy, Jaco Van Gass, Kadeena Cox**



**Dame Sarah Storey**

**Maisie Summers-Newton** — swimming, women's SB6 100m breaststroke

**Reece Dunn, Bethany Firth, Jessica-Jane Applegate, Jordan Catchpole** — swimming, mixed S14 4x100m freestyle relay

**Lauren Steadman** — triathlon, women's PTS5

**Team GB** — wheelchair rugby, mixed

**David Smith** — boccia, individual BC1

**Hannah Russell** — swimming, women's S12 100m backstroke

**Reece Dunn** — swimming, men's S14 200m freestyle

**Hannah Russell** — swimming, women's S12 100m backstroke

**Phoebe Pine Paterson** — wheelchair archery, women's individual compound - open

**Andrew Small** — athletics, men's T33 100m

**Young Thomas** — athletics, men's T38 100m

**Hannah Cockroft** — athletics, women's T34 100m

**Sophie Hahn** — athletics, women's T38 100m

**Benjamin Watson** — cycling (road), men's C3 time trial

**Dame Sarah Storey** — cycling (road), women's C5 time trial

**Neil Fachie** — cycling (track), men's B 1000m time trial

**Jody Cundy, Jaco Van Gass, Kadeena Cox** — cycling (track), mixed C1-5 750m team sprint

**Lora Fachie** — cycling (track), women's B 3000m individual pursuit



**Phoebe Pine Paterson**

# Food Bank on the Move

Steve Allinson

**T**he Curry Rivel, Drayton and Hambridge Food Bank has a new home. We are now situated in the North Chapel of St Andrew's Church and are very grateful to the PCC for allowing us to use this area.

First, though, everyone associated with the Food Bank is so grateful to Rev Tim Richards and his congregation for "housing" us for nearly 18 months. It has been a brilliant venue for us, and the help from many involved with the URC has been huge.

We are open for donations of food or money exactly as before, namely 10.30-11.30 every Wednesday and Saturday. St Andrew's Church will, of course, be open at those times so please do come and support us.

Without wishing to sound ungrateful, as the support we have received has been brilliant, it is fair to say that supplies of food and monetary donations have reduced recently. Our requests for help from those needing support in our villages have, however, increased. So, if you are reading this and feel you wish to support us, now would be a great time. If you wish to make a regular donation, then please contact me at the email address below, and I can confirm our bank details. Alternatively, please do not hesitate to talk to any of our volunteers at

one of our sessions as they always love to chat with friendly faces.

As last year, we are hoping very much to help our families with extra treats at Christmas time, so, if you are very organised and already thinking about

your own Christmas shopping, it would be lovely if you could share an extra item or two with us.

As always, my thanks to everyone who has supported us to date.  
[steve@allinsonlaw.com](mailto:steve@allinsonlaw.com)



## Naturally Beautiful Beauty Salon

is based in Curry Rivel offering a wide variety of treatments including eyelash extensions, lash lifts, CACI, radio frequency collagen lift, massage, facials and waxing. Reiki and Reflexology are also available with Debbie.

Call 07903 727 590 or find us on Facebook



@naturally beautifulbeautysalon

## Curry Rivel & Chevilly



Twinned Communities since 1998

Phone 01460 281905 for more details

## Foundation Stage



Our Website  
[curryrivelprimary.somerset.org.uk](http://curryrivelprimary.somerset.org.uk)

We are open 5 days a week

7.30 a.m. - 6.00 p.m.

From 3 months to 4 year olds

50 weeks a year

Located within

Curry Rivel Primary School

For more details telephone

01458 252822

## "BOOTHIE"

General "Handy Man" Services

- **Window Cleaning** with Reach & Wash System
- **Guttering Cleaned & Cleared**—Give your gutters that spring clean  
Out of reach guttering no problem using gutter vacuum from ground
- **Grass Cutting; Shed Refelting**
- **UPVC Cleaned & Revitalised**—we can restore your Fascias, soffits, door & window frames to look like new

If the job you need isn't listed, just ask

Call Mike Booth on 01458 251498 or 07872 345623

email: [mikeboothie@btinternet.com](mailto:mikeboothie@btinternet.com)





# The 'FORGET ME NOT' Cafe is planning to re-open!!!!

Roger Hampton

**T**he Forget Me Not Cafe plans to re-open in January 2022, (subject to the latest Covid rules, or restrictions) at Curry Rivel Village Hall. More details will be available in the coming weeks.

Over the last 9 years the Cafe has welcomed attendees from all around the Langport and Somerton area, and has been enjoyed by all.

The Cafe is 'a great place to make friends, especially for those with memory challenges'. We also welcome anyone who has had a stroke, or are lonely, and wish to meet others.

When the Cafe re-starts, there will be the usual gentle activities, entertainment, games, sing-along and not forgetting tea and home-made cakes. To be extra safe all the Cafe team, and those attending must be 'double vaccinated'

To kick things off it is planned to have a Christmas Party on Tuesday 7<sup>th</sup> December from 2.30pm till 4.30pm. So please come along for a great time.

If you would like more information about the Cafe then please contact....

Adrienne on 01458 252710 (email: [brian1122@btinternet.com](mailto:brian1122@btinternet.com)) or

Christine on 01458 396123 (email: [clhampton@live.co.uk](mailto:clhampton@live.co.uk))

## SEAN MOUNTER

### Plumbing & Heating Engineer



CTIB  
Trained

Gas  
contracted  
installers

For full Gas & Oil Central Heating

Fully apprentice served  
with City & Guilds  
qualifications

All types of plumbing &  
heating installed, Boiler  
changes, Heating  
upgrades

Complete bathroom,  
shower rooms  
installation incl. tiling,  
building work etc.

**No job too small. No VAT. Free competitive quotes and advice**

Tel: 01458 253015  
Mob: 07748 183282

Herald House,  
Langport TA10 9RQ

## Tincknell Fuels

Your Local Fuel &  
Heating Specialists

### Tincknell Fuels

- ☒ Reliable Fuel Deliveries
- ☒ Automatic Top Up Service



### Tincknell Heating

- ☒ Gas/Oil Boiler Maintenance
- ☒ Boiler Installation
- ☒ Oil Tank Installation

**01749 683911**

[www.tincknells.com](http://www.tincknells.com)

01458 259679 / 07779 322130

## S R BUILDING

Brickwork  
Plastering—Roofing  
Patios—Tiling  
Decorating  
All General Building Work &  
Property Maintenance

[stephen.reddings@live.co.uk](mailto:stephen.reddings@live.co.uk)

## Hamar Fencing & Garden Services



- \* Specialist in fencing & gates
- \* Patios & decking
- \* Hedge trimming & tree work
- \* Landscaping
- \* Turfing & artificial lawn

☎ 07792567318

✉ [hamarfencing@yahoo.co.uk](mailto:hamarfencing@yahoo.co.uk)  
[hamarfencing.com](http://hamarfencing.com)



## KEVIN PRICE (PREEFENCE LTD)

All types of fencing supplied and installed.

Panel, Closeboard, Post & Rail, Stock fencing & Gates.

Free no obligation quotation or advice

Contact Kevin Price on 01458 251123 or 07968 565939



AGRICULTURAL  
&  
EQUESTRIAN

## St. Andrew's Church

Find us at: [www.curryrivel.org.uk/local-info/churches/st-andrews-church.html](http://www.curryrivel.org.uk/local-info/churches/st-andrews-church.html) and [www.achurchnearyou.com/church/11260](http://www.achurchnearyou.com/church/11260)



*We warmly welcome visitors and new members of the community to any of our services and other events.*

### Covid effects

With Covid regulations remaining as they were last month, St. Andrew's Church continues to be open to everyone daily. Also, 'live' services will stay relaxed, although use of face masks and sanigel are required in some circumstances - see the notice board in the porch. If local conditions dictate, short notice changes may be necessary. Therefore, please check the notice board in the churchyard by the Green, in the church porch, the village website or our 'A Church Near You' web page.

## October

### Sunday 3rd

10.00 **FH** - Family Harvest Service  
11.00 **FH** - Said Communion CW  
6.00 pm **CR** - Harvest Songs of Praise

### Thursday 7th

10.00 **CR** - Holy Communion BCP

### Sunday 10th

9.30 **SW** - Holy Communion BCP  
11.00 **CR** - Parish Communion CW  
6.00 pm **FH** - Evening Worship

### Sunday 17th

9.30 **FH** - Morning Worship CW  
11.00 **CR** - All Age Family Service  
11.45 **CR** - Said Communion CW

### Thursday 21st

10.00 **CR** - Holy Communion BCP

### Sunday 24th

9.30 **FH** - Parish Communion CW  
11.00 **CR** - Morning Worship CW  
6.00 pm **SW** - Evensong BCP

## From St. Andrew's Flower Guild

We do not have any records as to exactly when the Flower Guild was formed, nor is there anyone around today to ask. There is a note of thanks from a retiring president dated 1992 who stated that she had been in the Flower Guild for 40 years! Which would take us back to the early 1950's but I do suspect that ladies had been using flowers to decorate the Church well before then, even if on a more informal and less organised basis.

The minutes of meetings held indicate that there may have been up to 40 members. Certainly a far cry from our number of members today which is 12.

Traditions evolve over the years, the fete weekend has been marked with the Flower Guild doing quite a spectacular display in the Church. The theme tends to be different every year and is masterminded by one of our members who is especially skilled at flower arranging. Some will remember Doreen Westerman and Rosemary Leaf, and in recent years Barbara Osborne has directed our efforts. Subjects such as children's book titles, hymns, wedding anniversaries, France, Saints, Noah's Ark, the circus and birthdays. These displays do not constitute a Flower Festival, however, in 2003 we did put on a proper Flower Festival entitled "A Somerset Village" when all the organisations, shops, businesses and pubs in the village were depicted in flower arrangements.

Church flower arrangers are dedicated to placing flowers in Church throughout the year, with thought and care they enhance an already beautiful setting.

More than that, flowers arranged in Church remind us of the wonder and beauty of nature created by God for us all.

### October ctd.

#### Sunday 31st

10.00 **CR** - United Benefice  
All Age Holy Communion CW

**CR** = St. Andrew's Church, Curry Rivel

**FH** = St. Martin's Church, Fivehead

**SW** = St. Catherine's Church, Swell

### From the Flower Guild ctd. . .

At present, a rota is formed on the basis that the arranger oversees the flowers for two weeks at a time. There are no flowers placed in Church during Lent, the exception being Mothering Sunday when the Guild makes posies for children to present to their mothers and other ladies who may not have children with them.

Normally we do three arrangements in Church, but during the pandemic this has been reduced to one; future plans have not been decided yet.

However, at Easter, Harvest and Christmas it's all hands on deck and we try to have flowers in all the windows!

Throughout our lives we give and receive flowers as tokens of love, congratulations, remembrance, thanks and much more. Placing flowers in Church is also a way of saying "thank you" to God for the beauty, joy and healing flowers can bring.

Easter, Christmas, Flower festivals and weddings all bring a different dimension and enjoyment to the arranging.

Arranging in Church is often a very peaceful, calming time. It can also be exciting, especially when we are arranging for a festival and bringing an element of interpretation into the designs.

If you would like to try arranging flowers in Church, you would be very welcome. If you're new to arranging or have limited experience we would be very happy to give some guidance, simple tuition and support.

The most important thing is that it is enjoyable to you.

If you would like to find out more, please call Adrienne – 01458 252710 or

Sue – 01458 253496

### St. Andrew's Rotas October

**Brass** - Sue Blackwell

#### Flowers

1st - Harvest  
8th & 15th - Adrienne Holmes  
22nd & 29th - t.b.a.

#### Cleaning

1st - Wendy Graves  
8th - Anne Geach  
15th - Anne Goff  
22nd - Jackie & John de Ronde  
29th - Carolyn Paton



### **Help to give St. Andrew's a great future . . .**

This was the request in the heading of the letter that was distributed door-to-door in the village in early July.

A very sincere 'thank you' to those who answered this request and donated either during the various Fete Friend gatherings or in other ways.

Your generous donations will certainly contribute to the upkeep of the church and ministry in the village in the coming year.

The Rector and PCC of St. Andrew's

### **St. Andrew's Autumn Fayre**

There will be a small autumn sale in the **Old School Room** on

**Saturday 30th October 10.00 - 12.30**

Craft (including hand-made cards & children's knitted items), cakes, books and some bric-à-brac will be on sale.

May be you can find that early Christmas present.

Refreshments will be available in St. Andrew's Church.

### **From St. Andrew's Registers**

#### **Weddings**

*We wish them God's blessing at the start of married life*

24th August - Fiona Robertson and Christopher Davies

1st September - Grace Burrows and James Vine

18th September - Shelley Trevelyan and Mathew Tichias

#### **Funerals**

*May God grant them eternal rest.*

15th September - Funeral service at Yeovil crematorium of Joyce Crush

The **URC Harvest Festival** was a very simple service of thanksgiving on 26<sup>th</sup> September –no charity lunch this year– the thanksgiving gifts of food we brought as a congregation being shared with those who will benefit from that form of support.

## **United Reformed Church**



### **October**

**Services start at 10.30 am.**  
**They take place in our Chapel building and simultaneously live via Zoom.**

**Sunday 3rd** - Rev and Mrs Huggett

**Sunday 10th** - Rev Tim Richards

**Sunday 17th** - Mrs Suzi Smith

**Sunday 24th** - Rev Rowena Francis  
(incl. Holy Communion)

**Sunday 31st** - Mrs Glenys Allinson

## **October**

**Anyone** unable to attend a service in person who would like to feel part of a worshipping community is invited to join us -from any denomination or none; simply e-mail [Steve Beney](mailto:SteveBeney@yahoo.co.uk) on [stevebeney@yahoo.co.uk](mailto:stevebeney@yahoo.co.uk) expressing your interest and he will contact you, explaining how to join us on Sundays @ 10.30 am.

We are an inclusive, outward looking group of people and we welcome all: wherever you are on your life/spiritual journey we welcome you without regard to age, gender, denominational background, sexual orientation, race or ability. At the moment, conversation takes place outside after the service rather than over coffee. All are Welcome.

**Minister: Rev. Tim Richards**  
**01458 252799**

### **Love As A Verb**

It has been distressing to watch & listen to what has been occurring in Afghanistan during recent months – the horror of it thrown into greater relief by the evacuation from Kabul airport happening concurrently with the inspirational stories coming out of the Tokyo Paralympics. Stories of triumph over adversity, of empowerment & fulfilment set alongside stories of terror and abandonment. We may all have differing opinions about the politics - and different ideas about what should happen now. But I am reminded of God's entreaty To Love, 'to love' as a verb, in how we act, behave, respond. We are exhorted to love the stranger in our midst: 'the alien who resides with you shall be to you as the citizen among you; you shall love the alien as yourself' (Deuteronomy 10 v.19). Jesus illustrates this point further (Matthew 25 v.34-40) – whatever we do for others, in particular the least (meaning with less societal status) among us, we do for God; 'I was hungry and you fed me, thirsty you gave me something to drink, I was a stranger and you invited me in, needed clothes and you clothed me, sick and you cared for me, in prison and you visited me...whatever you did for the least, you did for me'.

So what will our acting out of God's exhortation 'to love' be?

Sharing our harvest to feed others is a start. Passing on spare clothes to Care4Calais, Refuge Aid, or other agencies supporting the Afghan refugees who have landed in our country with nothing more than one change of clothing, another.

My brother (another Rev.!) wants old and no longer needed prescription glasses for his 50<sup>th</sup> birthday this year – they will be recycled by Specsavers and the Lions Club, sent to communities in need of sight support overseas. He and I are also collecting unwanted real or costume jewellery and watches (any material and in any condition, damaged and broken included) to support Water Aid. Water Aid recycles the jewellery using the proceeds to support their work digging wells, installing taps and toilets, providing clean water and sanitation for communities in 28 countries.

So, if you have any **unwanted prescription glasses or jewellery/watches** (whatever condition) please feel free to **drop them off at Orchard View, Townsend** (letterbox or simply outside the door) and I will make sure they get to someone who needs them. **(Deadline for both collections is December 1<sup>st</sup>).**

What might your response to God's encouragement 'to love' be?

Ali Richards



## Vacancy on the Parish Council! Being a Councillor

*Lydia Mason – Clerk and Responsible Financial Officer, Curry Rivel Parish Council*

**C**urry Rivel Parish Council needs a new team member; if you think you would like to take the wishes of the Parish Plan forward and are over 18 years of age, contact the Clerk on 07714 510828 or email [curryrivelparish@outlook.com](mailto:curryrivelparish@outlook.com)

### What is a councillor?

Councillors are elected to represent an individual geographical unit on the council, known as a ward or – parish. In Curry Rivel it is the entire parish. They are generally elected by the public every four years, but there is currently a space available on the Parish Council as we've received a resignation.

### What do councillors do?

Councillors have three main components to their work.

1. Decision making - Through meetings and attending committees with other elected members, councillors decide which activities to support, where money should be spent, what services should be delivered and what policies should be implemented.
2. Monitoring - Councillors make sure that their decisions lead to efficient and

effective services by keeping an eye on how well things are working.

3. Getting involved locally - As local representatives, councillors have responsibilities towards their constituents and local organisations. These responsibilities and duties often depend on what the councillor wants to achieve and how much time is available, and may include:
  - A. Going to meetings of local organisations
  - B. Going to meetings of bodies affecting the wider community
  - C. Taking up issues on behalf of members of the public

### How much time does it take up?

Quite often councillors say that their duties occupy them for about an hour a week. Obviously, there are some councillors who spend more time than

this - and some less, but in the main, being a parish councillor is an enjoyable way of contributing to your community and helping to make it a better place to live and work. As a councillor representing your community you will help keep it a great place to be. You will be supported in your role and will be expected to undertake training. You should be comfortable working electronically. You should have a positive outlook, a can-do attitude, want to make a difference and be willing to work as part of a team. If after reading this notice you are interested in finding out more or registering your interest in becoming a councillor, please contact the clerk to the council using the above details. Alternatively, please visit [www.nalc.gov.uk/elections](http://www.nalc.gov.uk/elections)

## Somerton u3a Garden Visits Group

### A Visit to Wellfield Barn, Wells

**T**welve hardy members of the garden visits group were given a warm welcome by owner of Wellfield Barn by owner, Virginia Nasmyth.

Twenty four years ago Virginia and her husband David bought a farmhouse plus yard and nearly two acres of land.

As Virginia said, "There wasn't one tree or shrub and David had to use a pickaxe to break up the concrete in the yard."

Over the years, following David's design of firm structure and relaxed planting, the garden has evolved into a tranquil half acre garden. The design integrates house, lawn and garden with the landscape with wonderful views over the ha-ha to Glastonbury Tor. Grass walks lead to the pond/bog garden, mixed borders, hydrangea bed, formal sunken garden to an area of one hundred and twenty young and semi-mature trees.

Not even a keen easterly wind could spoil a pleasant afternoon in such lovely surroundings and in such pleasant company.



## \*WARNING\*

All the below events are subject to cancellation at short notice due to the Corona virus epidemic please contact each group for details.....Keep well, Keep safe

## what's on ...In October

### Regular Events

#### MONDAY

9.45	Art Club	Village Hall
10.00	Table Tennis (kevlou@outlook.com)	Village Hall
3.30	Messy Church (2nd only)	School Hall
6.00	Pilates	Primary School
6.45	Explorer Scouts	Scout Hall, Langport

#### TUESDAY

10.00	Craft & Coffee (2nd only)	Old School Room
10.00	Keep Fit (nicky.barker1@btinternet.com)	Village Hall
2.30	Forget-Me-Not-Café	Village Hall
5.45	Pilates	Primary School
6.00	Cub Pack	Scout Hall, Langport
6.30	Guides	URC Hall
6.30	Langport Youth Club	Ridge way Hall
7.00	Short Mat Bowls	Village Hall
7.30	Sedgemoor Garden Club (2nd only)	All Saints Hall L'port
7.30	Tuesday Group (3rd only)	Drayton Village Hall

#### WEDNESDAY

9.30	Mother and Baby Group	Village Hall
6.30	Cycling Club	Bridge Cafe
6.30	Line Dancing Classes	Village Hall
6.45	Scouts	Scout Hall, Langport
7.30	Bell Ringing	St. Andrews

#### THURSDAY

10.00	WI	Village Hall
2.00	Short Mat Bowls	Village Hall
4.30	Rainbows	Village Hall
4.30	Brownies	Village Hall
7.30	Parish Council (1st only)	Village Hall

#### FRIDAY

9.30-2	Get Together Club	Village Hall
7.30	Movie Night	Village Hall

#### SATURDAY

9.00	Cycling Club	Bridge Cafe
------	--------------	-------------

Saturday 30 October 10.00-12.30 *St. Andrew's Autumn Fayre*



### Deadlines for November Edition

**Advertising:** 5pm Thursday 7th October  
**Send to:** crn.nigel@outlook.com

**Comments & Articles:** 5pm Tuesday 12th October  
**Send to:** curryrivelnews@gmail.com

The Curry Rivel News is published monthly by the Curry Rivel News Group and is delivered free to households within the Parish.

<b>Editor</b>	<b>Jane Hamlin</b>	252946
	<b>curryrivelnews@gmail.com</b>	
<b>Advertising</b>	<b>Nigel Grinsted</b>	07734226000
	crn.nigel@outlook.com	
<b>Treasurer</b>	<b>Rob Atkins</b>	253008
	crntreasurer@yeatesatkins.co.uk	
<b>Publishers</b>	<b>Mike Davis / Richard Wilkins</b>	252554
	crnpub@gmail.com	
<b>Distribution Manager</b>	<b>Hazel Morris</b>	
	hazelmorris200@gmail.com	
<b>Secretary</b>	<b>Natalie Gunter</b>	
	crngsecretary@gmail.com	
<b>Staff Photographer</b>	<b>Mike Mason</b>	252076
<b>Church Pages</b>	<b>John de Ronde</b>	251355
	johnderonde51@hotmail.com	

### Some Useful Telephone Numbers

#### Youth Organisations

Beavers, Cubs, Scouts	01460 281184
Rainbows	01823 698940
Brownies	251953
Guides	252901
Langport Youth Club	0793 899 338

#### Sports Clubs

Short Mat Bowls Club	251201
Cricket Club	01823 698849 & 01458 252791

#### Social

Flower Show	250311
Out & About	252146
Royal British Legion	01460 281115
Twinning Association	01460 281905
Women's Institute	259688
Rotary Club of Langport & Somerton	252813
PROBUS	252545
Sedgemoor Garden Club	250091
Heale Lane Allotment Association	741880
Curry Rivel in Bloom	762296
Get Together Club	251524
Health Walks	250725
Mother and Baby	07732 197030
Forget-Me-Not-Café	252710 & 396123
Inner Wheel	251940
Tuesday Group	252657/252022

#### Arts

Entertainers	250311
Music Club	250863
Dancing Classes	07730 755203
Art Club	253126

#### Community Facilities

Food Bank (help@curryrivel.org.uk)	0771 6792760
Village Hall (crvhbookings@gmail.com)	741606
Old School Room Bookings (crosrbookings@gmail.com)	250655/253856
United Reformed Church Hall - Bookings etc.	259391

#### Community Services

Doctors	250464
Police	101
Yarlington Housing	01935 404500
Footpath & Litter Warden	johncasebourne@sky.com

#### Education

Little Pips	252822
Primary School	251404
Huish Episcopi Academy	250501
Huish Episcopi Leisure Centre	251055

#### Local Authorities

Parish Council (Clerk) curryrivelparish@outlook.com	07714 510828
District Council	0 1935 462462
County Council	0300 123 2224

#### Religious

Church of England Rector	251375
Churchwarden	259003
Secretary PCC	251355
Organist & Bell Ringing	253856
Flower Guild	252710
Roman Catholic Church, Somerton	274008
URC Minister	252799

### Pick up your Prescription from the Post Office

Do you pick up repeat prescriptions from Langport surgery? If so you can request your medicine to be delivered to Curry Rivel Post Office in the BP petrol station. When you reorder, simply ask for delivery to Curry Rivel PO (including reorders on the surgery website). The surgery delivers to the Post Office every Tuesday and Friday. And while you're in the Post Office you can pick up a cappuccino too!

## Eyes on the future – braving the Village Hall

Carolyn Paton

**I**n September the members of the WI met in the village hall for an almost-normal meeting. All Covid rules being observed, it was possible to spend an agreeable morning together as we re-acquainted ourselves with our usual meeting place and hoped that the lockdown experience was well and truly behind us. It was notable however that not all said experiences were negative. There were those who felt that as a result of all that regular walking, they were fitter, and in some cases, lighter too. Some enterprising members had involved themselves in their own projects, which had absorbed much of their time and attention.

You don't dig and set up a garden pond in just one or two sessions, as one member had done for example, and re-modelling the garden



had happened at more than one home. Gardening in general had occupied a larger place in several people's lives. Outdoor furniture had been renovated and smartened up to the satisfaction of owners too. Other time-consuming projects were the design and stitching of a cushion cover (later professionally lined and backed by Jolly Red), the re-upholstery of an easy chair, and the re-purposing of a surplus duvet cover and throw, into clothing. One member had knitted a tiny nest for a fallen fledgling. New skills!

Some had pursued courses of study, and most people had come out of this period with improved internet skills – at least to the extent of learning how to set up or to participate in zooming with family, friends and interest groups.



Social connections had been reinforced to an extent, with members being encouraged throughout to contact each other for morale purposes, and to keep an eye out for each other. As part of this, support had been enlisted for the provision of cheering treats in the form of cakes for pressed medical staff, and awareness had been raised of the community foodbank. The meeting was largely social, giving a chance for re-connection with others and for a little brain-stretching in the form of two quizzes formulated by Jackie German.

theWI  
INSPIRING WOMEN



All present were very pleased to find themselves in the more usual circumstances of the Hall and the list of proposed events for this month was reassuringly normal. At the end of the meeting, the programme for the coming year was distributed in the usual appealing format, thus emphasising a renewed hopefulness for an enriching year ahead. The next meeting will take place on 14<sup>th</sup> October, when there will be a talk by Luke Simon (recently seen on TV in a programme about the Tsunami) who will be talking about his 'School in a bag' organisation.

New members are welcome to join at any time, and those interested are invited to contact Anne Geach, President, 01458 253078

