



PUBLISHED MONTHLY AND DISTRIBUTED FREE TO ALL CURRY RIVEL RESIDENTS; ALSO AVAILABLE IN VARIOUS OUTLETS AROUND CURRY RIVEL

A Busy Christmas Craft Fair

Hazel Morris

Despite a damp and cold day, the Christmas Craft Fair saw lots of visitors interested to see all the wonderful handmade gifts available for sale. There was a wide range of crafts on display from hand knitted clothes and novelties to beautiful paper crafted cards and gift boxes and everything in between - including jewellery, wooden Christmas decorations, pottery and much more. All the stallholders were kept busy throughout the morning with many eager buyers.

Tea and coffee was available for a donation and this,

together with additional donations and the Name the Bear Competition raised £140 for the Curry Rivel, Drayton and Hambridge Foodbank. Thank you to everyone who contributed and especially to Claire Anderson who did an amazing job in the kitchen!



We have already made a provisional booking for the 2024 fair so watch this space nearer the time (24/11/2024). If you're a local crafter and are interested in taking part next year, please get in touch with Hazel – hazelmorris200@gmail.com

PS – in case you're wondering, the bear's name is Buddy.



Rainbow over St Andrews by Tony Greenaway

Volunteer to be an Independent Visitor or Advocate for children in Somerset

Would you like to make a positive difference in 2024?



There's a famous quote from Rev Sydney Smith "It is the greatest of all mistakes to do nothing because you can only do a little. Do what you can."



From as little as a couple of hours a fortnight and less than a week's quality training, you could be making purposeful contact with a young person and make a positive difference for them through outings, conversations, activities and more...

Route1 have two volunteering opportunities: Independent Visitor and Advocate.

Independent Visitors are volunteers who befriend and spend time with a child or young person who is in the care of the Local Authority. We will match your interests and skill set with a young person who will best suit your support. You and the young person have the freedom to decide what you do, how you do it, to build a meaningful friendship.



One young person with an Independent Visitor said: "Things I get from my IV relationship... is space from the world, where I can have an open and honest conversation with, at first a stranger, that becomes a friend. I would be happy to say it is a really good experience!"

An Advocate is an independent person who can offer one-to-one support to children and young people to have their voice heard when meetings are taking place concerning their wellbeing. It's the role of the Advocate to speak up for the young person, make them aware of their rights, listen to them and represent their views, wishes and feelings.

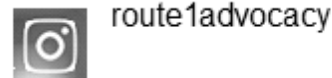
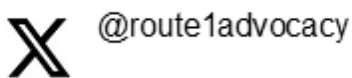
The Chair of a Child Protection Conference said "I am always amazed by the calibre of the volunteers and how generous they are with their time." Why not join our bank of advocates?

Your volunteering can be arranged to suit your availability. Your life experience will be highly valued, and you will be trained and supported in developing key skills.

To find out more, contact us: ☎ 01749 822801

✉ route1businesssupportadmin@somerset.gov.uk

🌐 www.route1advocacy.co.uk or scan the QR code



Your Community Website
curryrivel.org.uk



The FIREHOUSE Somerset

Follow for



@thefirehousesomerset

• news & events!

Weekly Events

MEGA MONDAY!

Eat in Pizza £10 each

2 FOR £20 TUESDAY

Takeaway Pizzas 5-7pm

PPP WEDNESDAY

Pizza, Prosecco & Pud

BURGS DAY!

2 Burgers for £25

FISH FRIYAY!

£10 Takeaway lunch
12 - 2.30pm & 5.30 - 7pm

Happy New Year!

to all our lovely customers - near & far!

We Are Open for...

Coffee,
Cakes
&
Bacon
Baps



7 days
a week!

Eat In or Takeaway

Quizza

1st Sunday
of every
month



Call us now

01458 887 447

see you soon!

For more details T&C - check online
www.thefirehousesomerset.co.uk

Bottomless Drinks

SUPER SATURDAY

The FIREHOUSE Somerset

Thanks for dining with us in December

get 20% off



Your **FOOD BILL IN JANUARY**
MONDAY - THURSDAY

Eat In ONLY. Max. Party of 6. Not to be used with any other promotions.

USE ME THIS JANUARY

New Year's resolution to get involved, to volunteer or to give back?

Sally Harvery

Are you interested in making a difference? Are you wanting to do something for your local community?

Do you have good business/finance skills? Do you have knowledge of HR or Health and Safety? Do you want to make a difference to your local school community? If so, being a Co-opted Governor at Curry Rivel Primary School and Nursery could be just the role for you.

We are very fortunate to have a school for the children of the village. Curry Rivel Primary is a popular small school, with an excellent reputation, set in the heart of the village. Recently graded as Good by Ofsted the school continues to go from strength to strength with a wonderfully friendly, caring, and supportive staff and a committed and equally dedicated governing body. We all work together to ensure that every child in our care is happy and safe and to offer them every opportunity to learn and to succeed during their time with us.

Co-opted governors from the community can make the link between the world of work and education and constructively support the success of their local school. You don't have to be an expert in education, we welcome interest from all walks of life to bring different perspectives and views. The role of school governor is a rewarding and

effective way of making a voluntary contribution to the lives of local young people.

Governors meet a couple of times a term and have a role in developing and monitoring the strategic direction of the school. Free training is offered, and it is a chance to be part of a friendly team making a difference.

If you are interested in our children's future, have energy and enthusiasm, and want to help to direct the school's future, please contact the school office, office@curryrivel.somerset.sch.uk or 01458 251404 with an expression of interest or contact Sally Harvery, Chair of Governors sharvey@curryrivel.somerset.sch.uk for further information about the role and an opportunity to meet Ali Pook the Headteacher and visit the school to find out more.



JONES
 GARDEN MAINTENANCE
 HEDGES
 BORDERS
 LAWNS
 AND MUCH MORE

TO ENQUIRE & FOR MORE INFORMATION CALL TRACEY & SEAN ON
07815 082984

Bow House Physiotherapy Practice
 Stacey's Court Car Park
 Bow Street
 Langport TA10 9PQ
 01458 253388

Chartered Physiotherapists

Also available:-
 Foot Health and Orthotics, Massage
 Therapy, Homeopathy,
 Occupational Therapy, Acupuncture, Bowen,
 Reflexology, Hopi Ear Candles, Pilates
 Classes.

www.bowhousephysiotherapy.co.uk
info@bowhousephysiotherapy.co.uk

Movies in the Village Hall

mvh.curry.wixsite.com/films

Alison Cockrell

The Great Escaper (12A)

Friday 19 January 2024



Based on a true story, this biographical drama tells of how 89-year-old Bernard Jordan, a World War II Royal Navy veteran, 'escapes' from his nursing home to attend the 70th anniversary of the D-Day commemorations in 2014.

This moving film stars two icons of British cinema – Michael Caine and the late Glenda Jackson in their last screen performances.

Also stars: John Standing, Wolf Kahler and Carlyss Peer.

Doors open at 6.30pm, show starts at 7.00pm in the Curry Rivel Village Hall.

Tickets £7 are available at the door. Refreshments available.

Clean as a whistle!

We can clean anything in your property.

Inside and out, including:

- **Windows**
- **Gutters and downpipes**
- **Facias, soffits and frames**
- **Conservatories including roofs**
- **Solar panels**
- **Patios, pavements and drives**
- **Greenhouses**
- **Carpets**

Just contact us to discuss your needs:

Tel: 01823 690154

Mob: 07590 636079

E: kevin@bawdencleaning.co.uk

BAWDEN
CLEANING SERVICES LIMITED
Established 1982

SEAN MOUNTER

Plumbing & Heating Engineer



CTIB
Trained

Gas
contracted
installers

For full Gas & Oil Central Heating

Fully apprentice served
with City & Guilds
qualifications

All types of plumbing &
heating installed, Boiler
changes, Heating
upgrades

Complete bathroom,
shower rooms
installation incl. tiling,
building work etc.

No job too small. No VAT. Free competitive quotes and advice

Tel: 01458 253015
Mob: 07748 183282

Herald House,
Langport TA10 9RQ

"BOOTHIE"

General "Handy Man" Services

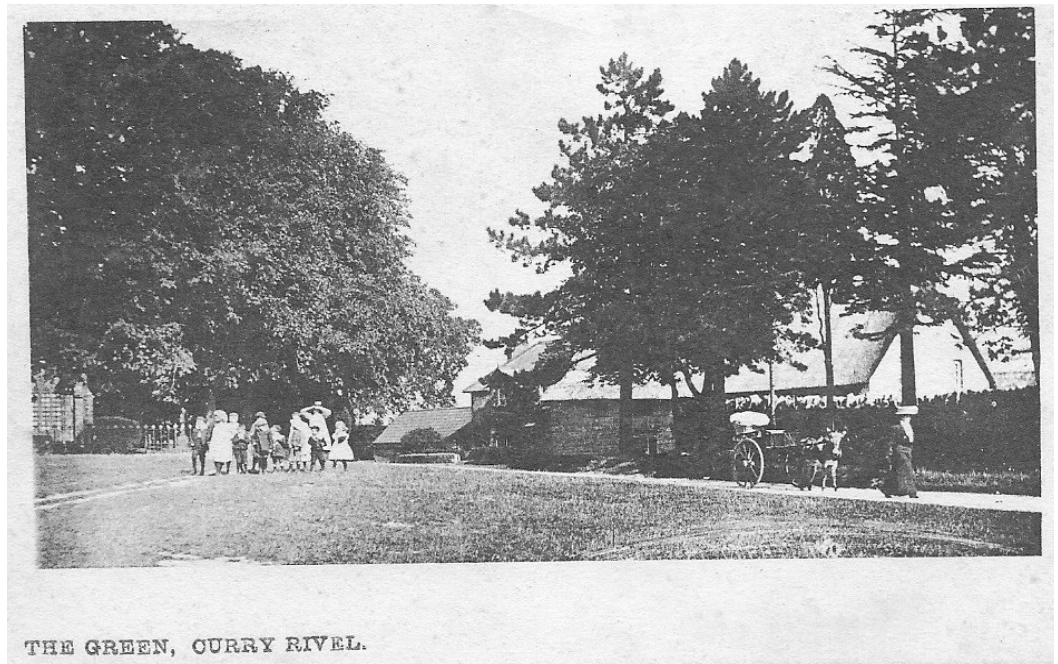
- **Window Cleaning** with Reach & Wash System
- **Guttering Cleaned & Cleared**—Give your gutters that spring clean
Out of reach guttering no problem using gutter vacuum from ground
- **Grass Cutting; Shed Refelting**
- **UPVC Cleaned & Revitalised**—we can restore your
Fascias, soffits, door & window frames to look like new

If the job you need isn't listed, just ask
Call Mike Booth on 01458 251498 or 07872 345623
email: mikeboothie@btinternet.com



The Green in 1909 or possibly earlier

Richard Hewitt is a good friend of the Curry Rivel News although he now lives in Bath. Richard sent us a copy of this picture postcard (that he recently acquired on Ebay) which was posted in Curry Rivel on 8th September 1909. As he points out, it is not in either of the books of photographs published in 2000 or 2014 so it is a terrific addition to our library of old photos.



THE GREEN, CURRY RIVEL.

The views expressed in **Curry Rivel News** are those of the contributors and not those of the publisher. Whilst every effort has been taken to ensure the information supplied for inclusion in the publication is accurate, responsibility cannot be accepted for any omissions or inaccurate information. We reserve the right to edit any contribution for the purpose of clarity, consistency and layout limitations. By supplying material for publication, you are giving consent for its publication on the village community website.

Bygone Days

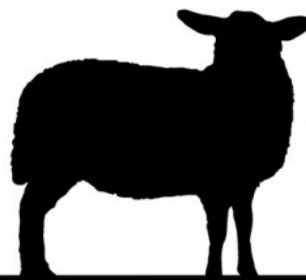
Janet Seaton

The Bridgwater Mercury on 6th September 1831 included this interesting piece of news. Perhaps they had a Coronation Big Breakfast – or its equivalent - in 1831

A correspondent informs us that the Rev. S. Alford, of Curry Rivel, near Langport, Somerset, with his usual benevolence, intends to present to the poor of the parish an excellent fat bullock and two prime sheep on Thursday next, in order that they may celebrate and bear in remembrance the Coronation of our most gracious and beloved sovereign, King William the Fourth.

Langport & District History Society

Our next talk will be at 7:30pm on Monday 8th January at the Sports & Social Club, Eastover, Langport. Alan Stone will talk about *The Orchard Wassail*. All are welcome. Non-members £4.



BUTCHERS
LTD.

We're local, we're friendly and we're here to help. We stock a wide variety of meats including Game, Homemade pies, pasties, scotch eggs and faggots. And a wide selection of local cheeses and local seasonal veg.

6 Parrett Close, Langport, TA10 9PG
Tel: 01458 250778

Mon-Fri 7am—5pm Sat 7am—4pm

Curry Rivel Brass Band in 1900

Janet Seaton, in her Bygone Days article in the December issue mentioned the Curry Rivel Brass Band. Here is the photograph of the band from *Curry Rivel Past & Present* book. We still have a few copies of the book (which was published in 2014) for just £5, so if you would like a copy contact us at: curryrivelnews@gmail.com



Curry Rivel News Grants

Jane Hamlin

As you know the success of the Curry Rivel News is only possible because of all the volunteers who give their time to produce and deliver it, and for the businesses that choose to advertise with us. Sometimes the amount we receive in advertising exceeds the costs of printing, and this enables us to make grants to local organisations that would benefit from a small financial boost.

If your voluntary group might benefit from such a grant, email us at: curryrivelnews@gmail.com, and tell us how we might help.

01458 259679 / 07779 322130

S R BUILDING

*Brickwork
Plastering—Roofing
Patios—Tiling
Decorating*

*All General Building Work &
Property Maintenance*

stephen.reddings@live.co.uk

D.D.I.Y

Don't Do It Yourself!

Do you have any work to do in or around your property that you can't or don't want to do? If so, we could do it for you.

We are a husband and wife team with over 30 years of home improvement, refurbishment and maintenance experience.

- Free Estimates
- Reliable
- Personable
- Clean & Tidy

Contact Roy or Debbie

01458 762604 or

07920 192471

Find us on Facebook

DDIY Don't-Do-It-Yourself

hklaw

We're there when it matters

Going through a relationship breakdown can be an overwhelming and difficult time. Our specialist lawyers will help you understand your options to make informed decisions.

- > Divorce > Financial Settlements > Child Custody
- > Cohabitation Agreements > Prenuptial Agreements



Leanne Weatherill
Partner



Hayley Coyne
Chartered Legal Executive

hklaw.uk

A Crewkerne T 01460 279100 E crewkerne@hklaw.uk

Wood Drove Kennels & Cattery

A family run 'home from home' in Langport for your dogs and cats, with plenty of space and cuddles!



Viewings by prior appointment

Tue, Fri & Sat at 2pm
01458 250556

www.wooddrovekennelsandcattery.co.uk

Mechanical, Electrical, Plumbing, Heating & General Property Maintenance



Aspectpropertymaintenance.co.uk
Info@Aspectpropertymaintenance.co.uk
Emergency Call Out 07741439022



Oh no!

The washing machine's not working!

Dishwasher...washing machine... tumble dryer...vacuum cleaner. If it's gone wrong, **IT CAN** usually **BE FIXED**. And it'll cost you nothing to find out if it can be fixed as I will provide a no obligation quote.

Today people think fixing household equipment isn't worthwhile due to the high cost. But often that's not true. For example a new washing machine can cost you up to £900 or more. But normally we can fix it for under £100. A saving of up to £800! With none of the hassle and timescales of ordering and fitting a new machine. Just contact me for a no obligation quote. We're local.

JASON WILLIAMS
07793 495091
AUTOWASH ELECTRICS

Naturally Beautiful Beauty Salon

Naturally Beautiful Beauty Salon is based in Curry Rivel offering a wide variety of treatments including eyelash extensions, lash lifts, CACI, radio frequency collagen lift, massage, facials and waxing.

Reiki and Reflexology are also available with Debbie.

Call 07903 727 590 or find us on Facebook
[@naturallybeautifulbeautysalon](https://www.facebook.com/naturallybeautifulbeautysalon)



Chartered Financial Planners and Investment Brokers



Local (Taunton, Bath and West)
Long-standing (getting old!)
Ethical (no nonsense e.g. our fees are clear and on our website)
 For **Real Expertise** around:

- Tax-Efficient Investments
- Pension Options for the Seriously ill
- Pensions at Retirement

www.quantockanalytical.co.uk
Tel: 01823 254183
hello@qtok.co.uk
 Authorised and Regulated by the Financial Conduct Authority

On yer bike!

Tony van Bergenhenegouwen

Langport Cycling Club (LCC) started in July 2018 when a small group of friends decided to get together for a regular Saturday morning pedal around the quiet lanes of South Somerset in search of a good Cafe for some Coffee and Cake.

Word soon spread, and new members began to join us on these regular outings starting from "The Bridge café" in Langport. Over the years, we have been known as "Wessex Wheelers" and "Bridge CC", but we finally settled on Langport Cycling Club earlier this year when we officially became a "Club" and joined British Cycling / Cycling UK. We now have almost 40 members, both male & female, from their early 20s to 60s+, so very much a mixed bag.

We cycle throughout the year with various routes for our "Steady" and "Speedy" groups that will cover different distances from around 20 miles at speeds to suit whoever is riding so that we never leave anyone behind. Also, we have a Tuesday morning "Early Bird" ride at 6.30 am. It's finished before 8 am, so you can exercise and chat before you get on with the rest of your day.

The 6 pm Thursday "Wobble" is a very popular event, as we ride to various local pubs in the area for a beer and occasionally a bite to eat. Our home pub is Eli's in Huish Episcopi as Ryan, the Landlord, rides with us, and we have monthly meetings there.

For the more intrepid riders, we do a monthly "Long ride" on the last Sunday of the month, which tends to be all day long and 100 miles or more. Once a year, we organise a Cycling Weekend to get away and cycle in a different area. In the past, we have been to The Cotswolds, The New Forest, and the Isle of Wight, and we are planning to go to The Wye Valley next year. In 2024, we are also



planning our first overseas trip to Majorca to tackle some mountains in the sunshine.

We are a friendly club and are always looking to encourage new members to join us, so if you would like to know more, please look at www.langportcycleclub.co.uk or call me at 0777 567 0546.

Ride safe!

**It's easy!
TO ADVERTISE
IN HERE**

*Just contact the
Advertising Manager:
Nigel Grinsted*

07734 226000
crn.nigel@outlook.com

SJH CARPETS & FLOORING



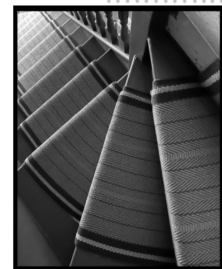
~CARPETS & VINYL
~ENGINEERED OAK & LVT
~DOMESTIC & COMMERCIAL

NOW A PROUD



RETAIL
PARTNER
WITH
AMTICO

FLOORING
MON-FRI 9AM-5PM,
SAT 9AM-1PM



~FREE MEASURING &
ESTIMATES
~PROFESSIONAL &
HELPFUL ADVICE
~PROFESSIONAL
FITTING BY OUR OWN
TRAINED FITTERS

THE OLD POST OFFICE, 38 NORTH STREET, LANGPORT, TA10 9RH

T:01458 887301 E:LANGPORT@SJHCARPETS.CO.UK WWW.SJHCARPETS.CO.UK

ALSO AT: TYTHINGS COMMERCIAL CENTRE, WINCANTON & HIGH STREET, TISBURY



Yes we can !

Carolyn Paton

When the Curry Rivel WI met in November, and when the usual business section had concluded, the membership settled in to listen to Peter Goodenough, who was ably assisted by tech support in the shape of his wife Sylvia. He spoke on a local topic with links to us all, the Curry Woods Conservation Trust. Peter and/ or Sylvia write regularly in this publication about the Trust, its work and related topics, but their presence highlighted the subject and its relevance to us and to our not-so-distant future.

The work of the Trust is to assist in the vital work of reducing carbon in our atmosphere, and while it may seem a small contribution towards attacking this huge and daunting task, it is the same as in many things; remedying an enormous problem begins by addressing it in a local and accessible way.

The area concerned consists of a 9 acre site, half of which slopes steeply down to the Levels and is already wooded. So what does the Trust aim to do? It aims to conserve and enhance that woodland, to extend and enhance it, to plant further native trees on the open area, encouraging part of it to become a wildflower meadow and to encourage biodiversity. All this has the additional advantage of increasing water uptake - always welcome in areas vulnerable to flooding. The Trust would like to make this space more accessible to the public, with a clearly defined path, a picnic area and regular school visits.

Planting began a couple of years or so ago, and WI members turned up, booted, gloved and bearing garden forks and trowels, ready to help plant a small glade of tulip trees and other saplings. Photographic proof was there in the CR News! These are now growing nicely and the area now sports a bench which awaits its commemorative plaque, marking the centenary of the WI's establishment in Curry. Peter and Sylvia illustrated the talk with photos of

specific species of tree, and with several striking graphs which showed only too clearly the major effect of apparently minor changes in CO2 levels. The earth's eco systems are very finely balanced, and the world works within very fine tolerances. In view of this, it is extraordinary and a matter for wonder that it operates successfully at all.

No-one wishes to trigger an 'extinction event', which is only too possible if we ignore current tendencies. The world only works because of plants small and large absorbing carbon and releasing oxygen. The action being taken locally, while small in the great scheme of things, is of real value. Personal action, as well as group activity such as that begun by the Curry Woods Conservation Trust also makes a difference; garden plants and small trees have a role too. The Somerset

Levels have recently been made a Super Nature Reserve, and need to be protected as they are threatened by sea level rises and could potentially be lost to flooding. 85,000 extra trees have already been planted around the Levels, and the aim is to continue, planting 284 hectares of the surrounding hills per annum. Action is being taken!

Let us combine hope with encouragement to work at playing our part. Thank you Peter for giving us food for thought.

The WI here in Curry is led by Anne Geach. Please contact her for further information. 01458 253078



RICS

Killens
CHARTERED SURVEYORS & PROPERTY AGENTS

killens.org.uk

From selling or letting your home to requiring a formal valuation to fine art auctions and house clearances.

We can assist.

Contact us for further help.

Somerton - 01458 397000
somerton@killens.org.uk

Dear Editor,

I was pleased to read in December Curry Rivel News the article concerning bonfires.

I moved to Curry Rivel 8 years ago to a very much overgrown half acre garden so clearing involved sorting large amounts of organic material....particularly wood.

I discovered the local recycling green bin but I would need dozens and that would be too expensive...ok for select difficult organic materials.

We fitted a modern wood burner in place of the open fire , built a wood store, purchased a shredder, and built some new wood chip paths.

I found cutting logs by hand is a excellent way to get warm, particularly for a 76year old on blood thinners!

At no time did we need to upset the neighbours by lighting a bonfire.

Best regards

Mike Davis

PS Don't forget the recycle centre at Somerton



- Trees & Hedges
- Dry-Stone Walls & Features (DSWA Professionals)
- Lime Mortar Walls & Pointing
- Gardening & Landscaping
- Fencing

Telephone: 01458 250 819
Mobile: 07765 518168

Sticks & Stones

Emrys Evans & Denise Evans

From the Curry Rivel News Team

**Happy
New
Year
2024**

ROOMS TO HIRE

at The Angel Community Center,
Bow St. Langport



Community room for 60 persons
Meeting room for 15 with wall monitor,
refreshments provided
Enquiries: Call John on **01460 249232**

Wiltown Garage

Wiltown, Curry Rivel TA10 0JF
Mon-Fri 8am to 5pm
Saturdays—Sundays closed
www.wiltowngarage.co.uk



- ◆ Batteries
- ◆ Exhausts
- ◆ Clutches
- ◆ Tyres

Vehicle Servicing & Repairs
Air Conditioning Servicing
Breakdown Recovery Service

service@wiltowngarage.co.uk
Phone **01458 252 166**

We can service your **NEW CAR**
and it **WON'T AFFECT**
The Manufacturer's
WARRANTY.
Ask us for details



St. Andrew's Church

To find out more, please visit us at:
www.curryrivel.org.uk or
www.achurchnearyou.com



We warmly welcome visitors and new members of the community to any of our services and other events.

January

Thursday 4th

10.00 **CR OSR** - Holy Communion BCP

Sunday 7th - Baptism of Christ

10.00 **FH** - All Age Family and Friends Service + refreshments
 11.15 **FH** - Said Communion CW
 4.30 pm **CR OSR** - Café Church
 6.00 pm **CR (OSR?)** - Evening Prayer

Sunday 14th - Epiphany 2

9.30 **SW** - Holy Communion BCP
 11.00 **CR** - Parish Communion CW

Sunday 21st - Epiphany 3

9.30 **FH** - Morning Worship
 11.00 **CR** - All Age Family & Friends Service + refreshments
 12.15 **CR** - said Communion CW
 4.30 pm **CR OSR** - Café Church

Saturday 27th

3.30-5.30 pm **CR OSR** - Messy Church

Sunday 28th - Epiphany 4

9.30 **FH** - Parish Communion CW
 11.00 **CR** - Morning Worship CW
 6.00 pm **SW** - Evensong BCP

CR = St. Andrew's Church, Curry Rivel
CR OSR = Old School Room, Curry Rivel, 'behind' St. Andrew's Church
FH = St. Martin's Church, Fivehead
SW = St. Catherine's Church, Swell

St. Andrew's Rotas January

Flowers

6th & 13th - Sue Randell
 20th & 27th - Angela Cole

Cleaning

6th - Liz Rendell
 13th - Lynne Comley
 20th - Tina Geary
 27th - Wendy Graves



Scott's spot



Half full or half empty?

January can be a tough month. Christmas is over, the weather is often cold or drab, and it's dark for too many hours. It can be easy to start feeling discouraged; to feel a bit glass half empty-ish.

An old legend tells how a man was once lost for days in a dark forest and came across an imposing barn. Needing shelter from the cold he entered and as his eyes became used to the dark he was amazed to discover that this barn was where the devil kept his storehouse of seeds. These were the seeds that were sown in the hearts of humans. He lit a match and looked at all the different types of seeds. There were seeds of greed, seeds of pride, seeds of selfishness, but surprisingly most of them were labelled 'Seeds of Discouragement'. Just then one of the devil's helpers arrived to pick up a fresh supply. The man asked him "Why so many discouragement seeds?" The helper laughed replying "Because they're so effective and they take root so quickly." "Do they grow everywhere?" the man asked, to which the helper's face suddenly screwed up in pain and disgust "No. They never seem to grow in the heart of a grateful person."

I know it is simplistic to point to a lack of gratitude as the only cause of discouragement, but many have found that gratitude can have a powerful and positive effect on us when we're feeling discouraged.

Scott's Spot ctd. . .

The Christian perspective has always been one of thanksgiving for everything received both now in this life, and in expectation of eternal life to come. Thus the Apostle Paul wrote to the early church reminding them (and us) of the God who, through Jesus, **'loved us and by his grace gave us eternal encouragement and good hope...'** (1 Thessalonians 2:16/17). And in later writing, Christian thinkers recognised that ingratitude was humanity's most reoccurring sin, and so came up with the motto: *"Nothing taken for granted; everything received with gratitude; everything passed on with grace."* How different our Western culture would look if seeds like this were to take root?

As we face January, are you feeling 'glass half empty' today? Is anything sapping your joy or dragging you down? In the Bible verse above Paul encourages us to keep things in perspective, and for Christians the promises of the gospel should colour and shape every situation for the better. But for all, the seeds of discouragement can be challenged. Consider listing all the positives in your life, the blessings you have, and be renewed in your spirit as that half empty glass begins to fill. *"Nothing taken for granted; everything received with gratitude; everything passed on with grace."* Now that's a New Year's resolution!

May you know encouragements as you need them this New Year, and on into 2024.

Rev'd Scott.

Café Church Exploring God, Faith and Life.

This gathering provides an opportunity to discuss different matters around God, faith and life over drinks and nibbles, in an informal setting, including some music.

We meet from **4:30 till 5:30-ish in the Old School Room** (see diary in left-hand column for dates).

All ages welcome, with some activities for younger ages too.

For more information contact
 Rev Mark McKnight on 074 7155 6366
 or markmcknight5@gmail.com

Forsey and Son

ESTABLISHED 1946
 INDEPENDENT FAMILY FUNERAL DIRECTORS
 MEMORIAL MASONS • PRE PAYMENT PLANS

Pound Pool, Somerton, Somerset TA11 6LZ
 Telephone 01458 272297 or Langport 01458 250509

28 High Street, Butleigh, Glastonbury, Somerset BA6 8SY
 Telephone 01458 850654

Willowfields, Lowerside Lane, Glastonbury, Somerset BA6 9GY
 Telephone 01458 831020



www.forseyandson.co.uk





Traditional chimney sweep
 Rotary Power Sweep
 Bird nest removal
 Camera/drone surveys

Follow Wiltown sweeps on FB
www.wiltownsweeps.com
 07861385283

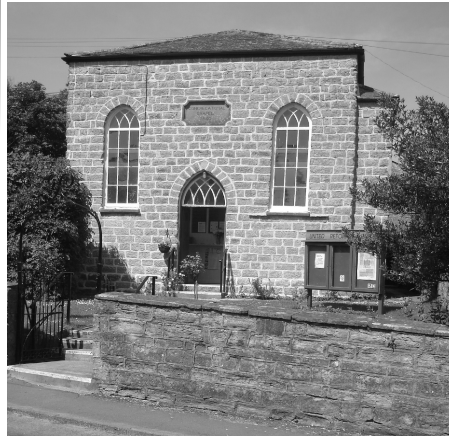
Would you be able to help by delivering a few copies of the Curry Rivel News each month?

You receive your copy of the Curry Rivel News each month because someone is kind enough to give a little of their precious time to deliver it.

Could you help out, too? It wouldn't take a lot of your time, but would be very much appreciated by those who receive the copies that you delivered.

For more information about what is involved, please contact our distribution manager at: bernard@hall159.plus.com

United Reformed Church



January

Services take place in our Chapel building at 10.30am.

- 7th** - Rev Evelyn Ridout
- 14th** - Mrs Jo Morling
(incl. Holy Communion)
- 21st** - Rev Tim Richards
Mid-Somerset Group Service
- 28th** - Prayer & Fellowship

A View from the Orchard....

January: named after the Roman god Janus, who depicted with two faces looks both forward & backwards, the month of January sits on the cusp of the new & the old. Often a time for making decisions about the future – perhaps in the form of ‘resolutions’, a determination to stop or start doing something – it can also present us with the opportunity (before the year gets fully underway & we become caught up in its momentum) to look backwards & reflect.

Questions we might ponder could be: what brought me joy in 2023? How might I express my gratitude? What caused me sadness? What brought (or brings) me comfort? What would I like to carry forward with me into 2024? What would I like to firmly leave behind? Where or how did I experience God through 2023? Where or how might I experience God here & now?

As a household we have found ourselves reflecting on our 18 or so years here often: we begin 2024 knowing this summer retirement from pastoral ministry will mean a geographical move (though not very far!).

We are a small, inclusive, outward looking group of people and we welcome all wherever they are on their life/spiritual journey, without regard to age, gender, denominational background, sexual orientation, race or ability. We respect the traditions of our past, engage with the present and look forward to the future, believing our work together is rooted in our relationships with God, each other, and the world around us.

Tea/coffee is served after every service providing the opportunity to meet and chat with each other and the service leader.

URC Minister: Rev. Tim Richards
01458 252799

Hall Bookings: 01458 253953

Thank you to all who joined us for our CHARITY CHRISTMAS CAROL SERVICE.

St. Margaret's Hospice expressed grateful thanks for the monies raised.

A View from the Orchard ctd

We have been recounting memories of Charity Garden Parties and Christmas High Teas at Orchard View; last month's CRN 'Christmas Past' front page brought back fun reminders of the Dickensian Christmas Craft Fair with grateful thanks for the hard work and commitment of URC members; Christmas Tree festival, Harvest lunches, Carol Services supporting Arc with shoeboxes filled with goodies donated by Curry Rivel residents and Organisations, Lent/Advent collections for the community foodbank..... summer BBQs, coffee mornings, Lent courses, Pillow Talk articles, even a car boot!...all with the hope of being Love and Light within our immediate community and beyond.

We bring our memories of these things with us into 2024 as beacons of hope and encouragement; appreciative of and grateful for all the support we have experienced, we leave behind the health challenges of the last couple of years. And we step into a New Year of transition – moving from one state or place to another – taking our leave but all the while looking to continue to align ourselves with God's Love and Light.

Tim & Ali Richards.

Somerton u3a..some of the activities 2023



Monthly meeting & talk



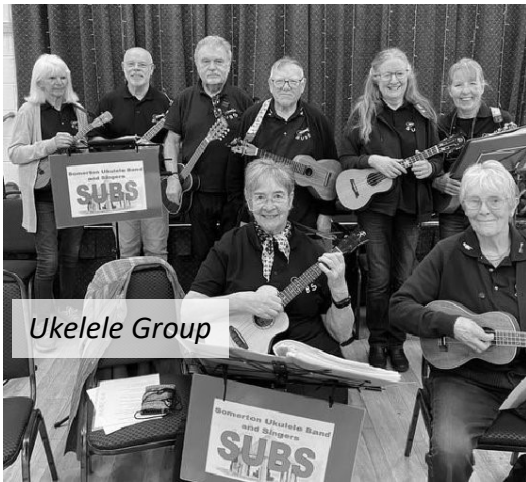
Striding in the Spring



Barn Dance



Photography Group



Ukelele Group



Recorder Group



CRESCENT FUNERAL SERVICES
SIMON HELLIAR-MOORE

An Independent Family Funeral Service for Langport,
Curry Rivel and Surrounding Communities

Offering a 24 Hour Service from our
Qualified Funeral Directors

Care, Respect and Compassion - 'The Crescent Way'

www.crescentfunerals.co.uk

01458 252505 ~ 01458 259476

Bow House, Bow Street, Langport, Somerset. TA10 9PQ
Townsend, Curry Rivel, Langport, Somerset. TA10 0HP

Prepaid Funeral Plans - Private Chapel Of Rest - Bespoke And Inclusive Services



...In January

Regular Events

MONDAY

10.00am	Art Club	Village Hall
10.00am	Table Tennis (kevlo@outlook.com)	Village Hall
6.00pm	Pilates	Primary School
6.45pm	Explorer Scouts	Scout Hall, Langport

TUESDAY

10.00am	Craft & Coffee (2nd only)	Old School Room
10.00am	Keep Fit (nicky.barker1@btinternet.com)	Village Hall
2.30pm	Forget-Me-Not-Café	Village Hall
4.30pm	Rainbows/Brownies	Drayton Village Hall
5.45pm	Pilates	Primary School
6.00pm	Cub Pack	Scout Hall, Langport
6.30pm	Rangers	URC Hall
6.30pm	Langport Youth Club	Ridge way Hall
7.00pm	Short Mat Bowls	Village Hall
7.30pm	Sedgemoor Garden Club (2nd only)	All Saints Hall L'port

WEDNESDAY

10-11am	Movement to Music (Age UK)	Village Hall
5.30pm	Beavers	Scout Hall, Langport
6.30pm	Cycling Club	Bridge Cafe
6.45pm	Scouts	Scout Hall, Langport
7.30pm	Bell Ringing	St. Andrews
7.30pm	Parish Council (1st only)	Village Hall

THURSDAY

10.00am	WI (2nd only)	Village Hall
2.00pm	Short Mat Bowls	Village Hall
6.30pm	Yoga	Village Hall

FRIDAY

9.30am	Pilates	Village Hall
9.30am-2pm	Friday Club	Village Hall
7.00pm	Movie Night (3rd only)	Village Hall

SATURDAY

9.00am	Cycling Club	Bridge Cafe
--------	--------------	-------------

Some Useful Telephone Numbers

Youth Organisations

Beavers, Cubs, Scouts, Explorer Scouts (gsithelevelsscouts@gmail.com)	
Rainbows	01823 698940
Brownies	251953
Rangers	075 07214 791
Langport Youth Club	0793 899 338

Sports Clubs

Short Mat Bowls Club	251616
Cricket Club	251453
Yoga	07789 862548
Pilates	07769 351984

Social

Flower Show	250311
Out & About	0788 737 7942
Royal British Legion	01460 281115
Twinning Association	01460 281905
Women's Institute	253078
Rotary Club of Langport & Somerton	252813
Sedgemoor Garden Club	250091
Heale Lane Allotment Association	741880
Curry Rivel in Bloom	762296
Friday Club	252791
Mother and Baby	07732 197030
Forget-Me-Not-Café	252710 & 396123
Movement to Music, Becky Bostock	07706 734604
Langport Cycle Club	0777 567 0546

Arts

Entertainers	250311
Music Club	250863
Art Club	253126

Community Facilities

Food Bank (help@curryrivel.org.uk)	07714 265384
Village Hall (crvhbookings@gmail.com)	07789 661288
Old School Room Bookings (crosrbookings@gmail.com)	250655/253856
United Reformed Church Hall - Bookings etc.	253953

Community Services

Doctors	250464
Police	101
Yarlington Housing	01935 404500
Footpath & Litter Warden	johncasebourne@sky.com

Education

Little Pips	252822
Primary School	251404
Huish Episcopi Academy	250501
Huish Episcopi Leisure Centre	251055

Local Authorities

Parish Council (Clerk) clerk@curryrivel.org.uk	07534 318840
District Council	01935 462462
County Council	0300 123 2224

Religious

Church of England Rector	251375
Churchwarden	259003
Secretary PCC	251355
Organist & Bell Ringing	253856
Flower Guild	252710
Roman Catholic Church, Somerton	07483 120 603
URC Minister	252799
Messy Church	01458 762523



Deadlines for February 2024 Edition

Advertising:	5pm Thursday 4th January
Send to:	crn.nigel@outlook.com
Comments & Articles:	5pm Monday 8th January
Send to:	curryrivelnews@gmail.com

The Curry Rivel News is published monthly by the Curry Rivel News Group and is delivered free to households within the Parish.

Editor	Jane Hamlin 252946 curryrivelnews@gmail.com
Advertising	Nigel Grinsted 0773 422 6000 crn.nigel@outlook.com
Treasurer	Graham Finlayson 0790 0082194 cr.news.treasurer@gmail.com
Publisher	Mike Davis 0786 799 1338 crnpub@gmail.com
Distribution	Bernard Hall 252378 bernard@hall159.plus.com
Secretary	Shirley Harvey 07554 595518 crnsecretary@hotmail.com
Church Pages	John de Ronde 251355 johnderonde51@hotmail.com

Pick up your Prescription from the Post Office

Do you pick up repeat prescriptions from Langport surgery? If so you can request your medicine to be delivered to Curry Rivel Post Office in the BP petrol station. When you reorder, simply ask for delivery to Curry Rivel PO (including reorders on the surgery website). The surgery delivers to the Post Office every Tuesday and Friday. And while you're in the Post Office you can pick up a cappuccino too!

Wild animals really need your help *Nigel Grinsted*

Do you know what to do if you find an orphaned, injured or sick wild animal? It could be an injured Pygmy Shrew which weighs in at a featherlight 2.4g or a juvenile Red Deer which can weigh 50kg or even more? That's heavier than you and me! Fortunately for us living in the South West we can contact Secret World Wildlife Rescue (SWWR) who are based in East Huntspill near Burnham on Sea.

It's natural, sadly, that wild animals occasionally get injured or get an illness. "Here at Secret World we treat up to 5,000 animals and give advice on 10,000 more every year" said George Bethell who works at Secret World alongside 40 members of staff and over 300 volunteers. But helping animals isn't easy or simple. It's so important that anyone finding any distressed animal treats it appropriately. The first – and natural – response is to pick it up. "That can be wrong" said George. "Often juvenile animals are perfectly healthy and have been left temporarily by their parents who simply want their youngsters to be left alone" he said. "Indeed disturbing a resting juvenile could result in the animal family being permanently disturbed. So it's best to leave it alone and monitor how the adults interact with it" said George. "It's not infrequent to find tawny owl chicks on the ground – they often slip to the ground but are completely safe and can sometimes climb back to the nest".

What you should do

So, assuming it's not a healthy juvenile, what is the best thing to do? It depends upon several key factors. These are:

- its location – is it in a safe place? If not – say it's on a road – move it to the closest safe location you can; otherwise leave it alone;
- its condition – is it clearly distressed or injured? If so, call SWWR immediately on 01278 768723 or 01278 783250;
- your location – tell SWWR where you are; having a camera or smartphone available will help you share pics with the team;
- your ability to travel – inform the SWWR team if and how you can help move the injured/sick animal.

How SWWR will help

After discussing the injured or sick animal with SWWR, they will either:

- arrange for the animal to be transferred to SWWR for further treatment or
- arrange for the animal to be transferred to an alternative location for treatment.

"A wide range of wild animals can be treated including mammals, birds and reptiles" George said. "Many can be treated within a few days or weeks. Some like juvenile Otters, which often need extended treatment, can stay with us for

up to 18 months. We're delighted that we've recently rescued our first two Beavers that were trapped in a Frome storm drain" said George.

SWWR also operate four charity shops: Langport, Burnham, Glastonbury and Bridgwater.

How we helped Eva

We first heard about Eva in March 2021; a phone call was received about a fox in Bristol that was tangled in netting. Sending two SWWR drivers to Bristol to investigate we discovered that Eva was a young vixen, one of last year's cubs. Eva was incredibly nervous and would not come close enough to be caught in a net. Luckily Eva was eventually caught after five months!

She then made her journey to Secret World, receiving three weeks of rehabilitation. Here she received weekly wound checks with our vets. Eva was a joy to work with, normally foxes do not cope well in captivity, but Eva remained calm during her time with us. Perhaps this was due to her living in Bristol and being used to the busy hustle and bustle of people?



Eva being examined by a vet



Eva in full health