

August 2021



PUBLISHED MONTHLY AND DISTRIBUTED FREE TO ALL CURRY RIVEL RESIDENTS; ALSO AVAILABLE IN VARIOUS OUTLETS AROUND CURRY RIVEL



Gina Beauchamp    cribsomerset@gmail.com  
01458 762296

## Front Garden Competition

This was judged in the last week of June and the winner is.....

Jeff Fling at Corner Cottage for his wonderful Cottage Garden.

Second Prize goes to Naomi Powell for a new garden with imaginative use of old logs.

Third Prize goes to Diane Patton with lots of recycled containers on a difficult steep slope.

Winners have received certificates and garden vouchers and the winner also receives a trophy to keep for a year.

Well done and thank you to all those who entered and help to keep our village looking great.



*Jeff Fling... winner of front garden competition*

*...continued on page 10*



*Third Prize*



*Second Prize*



*Corner Cottage*





# Somerset Artworks Open Studios 2021 *Sebastian Chance*

Somerset Artworks Open Studios is back for 2021 following a largely online event last year.

**O**pen Studios takes place from 18<sup>th</sup> September to 3<sup>rd</sup> October. Artists from all over the county will be opening their studios to the public for two weeks. Visitors will be able to see artists working in a wide range of media including painting, sculpture, printmaking, ceramics and glass, textiles, and photography.

Somerset Art Works wants to increase the amount of cultural provision for families and schools and to highlight the opportunities that are available to them. Early engagement with arts and culture shapes habits for a lifetime and builds support for arts and culture in the future.

Somerset Art Works like to feature venues offering their own activities, workshops, talks, demonstrations or have-a-go sessions for families. Family Friendly Weekends run over the three Open Studios weekends (18th/19th Sept, 25/26th Sept and 2nd/3rd October). Artists from Curry Rivel and neighbouring villages will be taking part so look out for the yellow signs in September.

For more information go to the Somerset Artworks website:  
<https://somersestartworks.org.uk/what-we-do/art-weeks/>

Look out for the September edition of the CRN for details of artists living and working in and around Curry Rivel.



Over 200 artists' studios and spaces across Somerset open their doors this autumn

+ events, activities, films and talks  
 ++ in person and online

[somersestartworks.org.uk](https://somersestartworks.org.uk)

Image: Julia Thompson



Sue Haigh

**J**oin the Somerton u3a in August and receive 2 month's membership free, for more details contact the membership secretary

email: [membership@Somertonu3a.uk](mailto:membership@Somertonu3a.uk). You are guaranteed a warm welcome. More of our interest groups are meeting so there are opportunities to start new ventures and make new friends.

Assuming the current restrictions have ended, from September we are looking forward to meeting again at the Edgar Hall. The meetings will start at 10.30 with announcements and any business, this will be followed by a guest speaker. More details in the September edition of Curry Rivel News.

- Trees & Hedges
- Dry-Stone Walls & Features (DSWA Professionals)
- Lime Mortar Walls & Pointing
- Gardening & Landscaping
- Fencing

Telephone: 01458 250 819  
 Mobile: 07765 518168

**Sticks & Stones**

Emrys Evans & Denise Evans



Your Community Website  
[curryrivel.org.uk](https://curryrivel.org.uk)



# District Councillors' Report

*Tiffany Osborne and Clare Paul*

## Waste and recycling collections

**W**e have been receiving quite a lot of communications about missed waste collections. SSDC have asked for residents to report any missed collections online. There appears to be a nationwide driver shortage as well as what has been called 'local pressures' due to Covid, which has delayed training and the departure of many EU drivers, and although there have been some improvements Somerset Waste Partnership stress there is no quick fix and disruption is likely to continue for some time. The 'My Waste Service' feature on [www.somersetwaste.co.uk](http://www.somersetwaste.co.uk) is available 24/7 and the quickest way to report an issue. The crews will do their best to return within two days but if they do not then the collection will happen on the following week's collection day.

## The phosphate issue and planning

The phosphate issue continues to impact on planning in our area with SSDC trying to define the types of mitigation that can be brought forward. Such interim measures are likely to include woodland planting and fallow land schemes with the intention of developing a 'blended credit' of planning obligations and land mitigations. This is a solution but hardly

a long term one. For starters it will involve a change of use of significant areas of land, as well as design wetlands which take longer to provide functioning mitigation. It will also involve taking land out of agricultural use which appears a very short term vision for planning with a long term loss for food sustainability. Having read the letter in the CRN last month we were slightly surprised to read that the blame was 'squarely at the feet of our local politicians'. Alas, this situation is a Government one. A private company, Wessex Water, is accountable for the management of waste in our rivers and we pay our rates accordingly. However, their investment in infrastructure and resources to ensure the water quality is maintained has been found lacking and they have openly said that further investment will take until 2024 to get their own mitigation factors in place. This is an unacceptable level of time for the applicants as well as builders and supply chains to wait with many now starting to lay off staff. The Government either takes over the situation or loans the company the money to sort the issue out. Wessex Water is by no means the only water company in this situation. We are in touch with the local MPs to act fast to get this matter concluded.

## D.D.I.Y

### Don't Do It Yourself!

Do you have any work to do in or around your property that you can't or don't want to do? If so, we could do it for you.

We are a husband and wife team with over 30 years of home improvement, refurbishment and maintenance experience.

- Free Estimates
- Reliable
- Personable
- Clean & Tidy

**Contact Roy or Debbie**

**01458 762604 or**

**07920 192471**

Find us on Facebook

DDIY Don't-Do-It-Yourself

## PRIME PLUMBING

- Qualified to provide plumbing and related electrical services.
- Specialist in kitchen and bathroom planning and installation.
- Tiling, plastering and flooring work undertaken.
- Will also investigate and repair plumbing and related electrical problems.
- Advice and estimates provided free of charge.
- No VAT charges.



For any work required, please contact

**Richard Ovenden, Prime Plumbing**

on **07800 543795** or e mail: [prime.plumbing@btinternet.com](mailto:prime.plumbing@btinternet.com)



**We're local, we're friendly and we're here to help. We stock a wide variety of meats including Game, Homemade pies, pasties, scotch eggs and faggots. And a wide selection of local cheeses and local seasonal veg.**

**6 Parrett Close, Langport, TA10 9PG**

**Tel: 01458 250778**

**Mon-Fri 7am—5pm**

**Sat 7am—4pm**

# Langport Heritage Website

Janet Seaton

**W**e're proud to announce the launch of our new improved website, [langportheritage.org.uk](http://langportheritage.org.uk). We've brought together all the information about Walter Bagehot, about the history of Langport and about the Langport & District History Society that was previously split between two separate websites. We've added a lot more material, and it's all presented in a user-friendly, accessible way.

Key features of the new Langport Heritage website are:

- Over 500 images illustrating Langport's history
- More information about Walter Bagehot's life and works
- Personal stories from local people that bring people and places to life
- Quirky aspects of our local history
- Original sources of particular interest to Langport

## An illustrated history

Our new section on Langport History presents many of our digital images, but instead of a gallery showing images on a loop, we've arranged them in subjects. For each aspect of Langport's history, there's some background information to give context to the images. As well as telling the stories behind many of the historic buildings on our main streets, there are sections on family and business history, social events, schools, floods and much more.

## Quirky stories

Find out about the postal jacket that was discovered in a Bow Street shop during renovations, and how its owner was traced. Learn more about 'the pump that saved Langport' from floods in 1960. Discover how Langport came to be the first place in Somerset to be granted a Sevastopol cannon after the Crimean War.

## More about Walter Bagehot

Walter Bagehot's life and works are covered in more detail than ever before. A new section on Key Dates records more factual information about his family, his career and his publications. You can also discover what has already been done to commemorate him, both in Langport and elsewhere. His pages are pure gold! You can go directly to the Bagehot pages from [bagehotlangport.co.uk](http://bagehotlangport.co.uk)

## Personal accounts

There are personal stories, such as John Mitchem's account of his forebears who ran the Railway Hotel, and Geoff Copson's investigation into a car that came from the Langport Motor Company in the 1920s.

## Original sources

You can read early school magazines from Langport Grammar School and Huish Episcopi Primary School, and leaf through the Grocery Book from the Langport Stores, showing one family's purchases in 1903.

If you want to know about the history of the Langport area in all its fascinating manifestations, this site is for YOU!

We want this new website to be a dynamic resource, with new material and features being added over time.

We welcome all feedback on it - whether it be comments, suggestions,

corrections or additions - so that we can constantly improve it for our users.

You can contact us via the website or email us at [info@langportheritage.org.uk](mailto:info@langportheritage.org.uk). For further information please contact: Janet Seaton, Chair, Langport & District History Society  
0792 146 1765



- CARPETS & VINYL
- WOOD & LVT
- BLINDS & SHUTTERS
- DOMESTIC & COMMERCIAL

THE OLD POST OFFICE,  
38 NORTH STREET,  
LANGPORT,  
TA10 9RH

T: 01458 887301 E: [langport@sjhcarpets.co.uk](mailto:langport@sjhcarpets.co.uk) W: [www.sjhcarpets.co.uk](http://www.sjhcarpets.co.uk)  
MONDAY-FRIDAY: 9-5 SATURDAY: 9-1

Also at Tythings Commercial Centre, Wincanton & High Street, Tisbury

## Charity Theatre Trips

Chris Cox

**B**ristol Hippodrome hopes to re-open shortly. Welsh National are staging **Madam Butterfly** on Wednesday 27<sup>th</sup> October 2021 and I have tickets reserved at £59 and £66, Stalls or Grand Circle. I need a few more bookings for **White Christmas** on Wednesday 3<sup>rd</sup> November to make it a 'goer'.

Both these 2021 shows have a payment date of later August but as ever book now as first come receive the best seats. After my payment date, if the show is cancelled you will be refunded, or if it is rescheduled your booking will transfer to the new date, with the option to have a refund.

Book online at [www.theatretrips.webeden.co.uk](http://www.theatretrips.webeden.co.uk) or e-mail [Charitytheatretrips@btinternet.com](mailto:Charitytheatretrips@btinternet.com).

The full list of planned trips is: **Madam Butterfly**, Wed 27 Oct 21, £59/£66; **White Christmas**, Wed 3 Nov 21, £46/£55; **Bourne's Nutcracker**, Tue 1 Feb 22 £41/£51; **We Will Rock You**, Wed 20 Apr, £45/£58; **Strictly Ballroom**, Tue 10 May 22, £36/£51; **Mamma Mia**, Mon 20 Jun 22, £49/£61; **Les Miserables**, Tuesday 19 Jul 22, £45/£58; **The Commitments**, Tue 21 Mar 23, £50.

We now have a Groups link on Facebook, if you do such exciting things! You can sign yourself up to receive the latest news. The link is 'Charity Theatre Trips'.

Finally, if you join the coach at Somerton we have to follow the new one-way system so your coach from Langport will have to circumnavigate Somerton on the way to the Half Moon Car Park and so pick up on the opposite side of the road from where we did in the past. Take care crossing!

Let's hope that we really are able to get going this autumn.

## Driver Training

We specialise in:

- Trailer towing
- LGV & PCV tuition
- Test preparation
- Confidence building

We have excellent pass rates due to our considerable experience

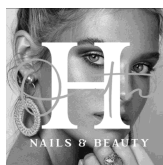
01458 250384

07815 121548

[info@yeovildrivertraining.co.uk](mailto:info@yeovildrivertraining.co.uk)

**Yeovil  
Driver Training**

[www.yeovildrivertraining.co.uk](http://www.yeovildrivertraining.co.uk)



### Oath Hill Nails & Beauty NAILS

File, Shape & Polish...Gel Manicure  
Gel Removal...Nail Repair...Nail Art  
Encapsulation...Acrylics...Infills  
Acrylic Overlays...Acrylic Removals

#### FEET

Express Pedicure...Full Pedicure  
Luxury Spa Pedicure

#### WAXING

Eyebrow Wax & Tint...Lip Wax  
Half Leg...Full Leg...Under Arm  
Chest, Shoulders & Back  
Basic Bikini Wax

#### LASH LOVE

Infills based upon two week top-up  
Lash Extensions...Natural Lash Tint  
Lash Lift & Tint

#### FACIALS

Mini, Standard & Luxury Facial

#### MASSAGE

Swedish Massage (Full/Half Hour)  
Hot Stone Massage (Full/Half Hour)

You can find us at the bottom of  
Red Hill, Curry Rivel:  
Oath Hill Barn, TA7 0JP  
Tel: 07837 283884  
Email: [amyhope86@icloud.com](mailto:amyhope86@icloud.com)

## It's great to be back Pop in and see us at The Firehouse

We're open seven days a week  
serving food every day

New covered heated garden terrace-  
great for cyclists, walkers and dogs

Weekdays we open at 10am serving

- Somerset Roasted Coffee
- Freshly Baked Pastries
- Lovely Cakes
- Eat In or Take Away

Weekday Lunch from £6.50

Weekend Brunch 9am-11.30am

Make it bottomless at 10am for  
endless Prosecco!

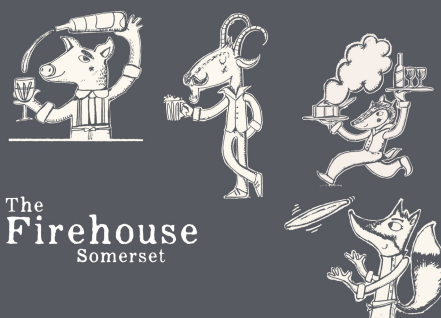
Full Take Away Menu

Available at lunchtime & evening

[www.thefirehousesomerset.co.uk](http://www.thefirehousesomerset.co.uk)

01458 887447

[hello@thefirehousesomerset.co.uk](mailto:hello@thefirehousesomerset.co.uk)





# Cream teas are more fun face to face than on Zoom!

**theWI**  
INSPIRING WOMEN

Carolyn Paton

**I**n July the WI was able to meet face to face for the first time in a full year. At last. A sociable gathering of 29 members caused some gentle (envious?) amusement to passers-by as they assembled on the Green on a breezy but pleasant afternoon, eager to catch up - in some cases with those they had not seen for many a month.

Armed with their own chairs and a knife - no nefarious intentions - a table laden with the elements for a cream tea headed the circle, as members settled in for an inaugural meeting. This kicked off unexpectedly with the distribution of glasses of fizz - a most welcome surprise. Celebrations were doubly in order, as we were marking not only the local occasion, but also the national appreciation day for all medical and other essential workers. The WI had been asked to contribute to this by enjoining members to spend a moment recalling all those who had carried on working for our health and well-being throughout the worst of the pandemic. We ran round the health-care workers most obviously on the front line, but also the unsung bin and delivery people, shop workers and post men and women.

It was not difficult to come up with a quite a list of those to whom we feel indebted. Individuals were able to take a card in which they could express their appreciation to one of these faithful

people, thanking them for their service in tricky times. Glasses were raised! There followed scones, cream and jam as well as other cake options, and those knives were put to good use. There were opportunities to confirm attendance and details for the forthcoming treasure hunt, golf croquet, book group or planned walking morning - all to take place before September.

The president, Anne Geach (01458 253078) expressed a hope that our next official meeting could take place in the Village Hall on September 9<sup>th</sup>, regulations permitting. A new (almost complete) programme for the year was distributed, giving all a taste of what is to come.

Thus fortified by scones and anticipation, the meeting drew to a close.



*Neta Chorley enjoys her cream tea*

Curry Rivel & Chevilly



Twinned Communities since 1998

Phone 01460 281905 for more details

## Wiltown Garage

Wiltown, Curry Rivel TA10 0JF  
Mon-Fri 8am to 6pm  
Saturday 8am to 12pm  
[www.wiltowngarage.com](http://www.wiltowngarage.com)



**MOT**  
Test Centre

- ◆ Batteries
- ◆ Exhausts
- ◆ Clutches
- ◆ Tyres

Vehicle Servicing & Repairs  
Air Conditioning Servicing  
Breakdown Recovery Service  
Car Valeting Inside & Out  
Body Repairs & Car Sales

Phone **01458 252 166**  
Mobile **07921 788 169**

We can service your **NEW CAR**  
and it **WON'T AFFECT**  
The Manufacturer's  
**WARRANTY**. Ask  
us for details



**A C FENCING**

FENCING - GATES - SHEDS - REPAIRS  
SECURITY FENCING - STOCK FENCING

**07470 286765**

[ac-fencing@outlook.com](mailto:ac-fencing@outlook.com)



Gina Beauchamp

**W**ell, the blue bags were delivered to some residents, but delivery was quite a shambles with some of us receiving two bags and some none. SSDC are plagued by a lack of lorry drivers, which meant that the black bin collection in our lane didn't take place as planned. Let us hope that over the next few weeks things will stabilise.

Now that we can recycle most plastics, there should be no plastic going into our black bins. Items that they won't collect can still be taken to the container at TESCO: mixed plastic, plastic wrap, cat and dog food pouches, crisp packets and cellophane. There is a large bin by the exit in Langport Tesco. Keep a bag in your kitchen and take it with you when full.

Flower pots are still not recyclable, so reuse them, offer them on *Next Door* or the Curry Rivel Facebook page, someone will always take them.

### Order containers

Everyone can have green and black recycling boxes, blue bags and food waste bins. Order new or replacement boxes or bins FREE online using the *My Waste Services* menu at [somersetwaste.gov.uk](http://somersetwaste.gov.uk) or call your district council. You can do it online. It is quick and easy to request services, report problems, download a collection day calendar and get useful updates. Visit [somersetwaste.gov.uk/recycle-more](http://somersetwaste.gov.uk/recycle-more) for more information about *Recycle More*. You call your district council on 01935 462462

## Forsey and Son

ESTABLISHED 1946  
INDEPENDENT FAMILY FUNERAL DIRECTORS  
MEMORIAL MASONS • PRE PAYMENT PLANS

Pound Pool, Somerton, Somerset TA11 6LZ  
Telephone 01458 272297 or Langport 01458 250509

28 High Street, Butleigh, Glastonbury, Somerset BA6 8SY  
Telephone 01458 850654

Willowfields, Lowside Lane, Glastonbury, Somerset BA6 9GY  
Telephone 01458 831020



[www.forseyandson.co.uk](http://www.forseyandson.co.uk)



## A New Home for the Food Bank ....

### Curry Rivel, Drayton and Hambridge

Our villages Food Bank has now been operating for almost 18 months, and we have been very, very grateful to Curry Rivel URC for offering us a home to establish our work. It has been a superb venue and very handy for many to deliver food and donations. I want to thank so much Rev Tim and his congregation for their support.

However, as lockdown ends and normal activities resume, it is right that the URC hall is once again used for its normal weekly activities. As many are aware we have put out an appeal for a new home and I am very grateful for those who suggested options, and we do now indeed have a new venue. So, from the beginning of September, we shall be based in the North Chapel at St Andrews Church. Thank you to Rev Scott and all on the PCC for their support in enabling this move to

happen.

We plan to remain open for receipt of donations of money and food at the same times as before (Wednesday and Saturday mornings from 10.30-11.30), but with the church being open at other times, donations of food could also be left then.

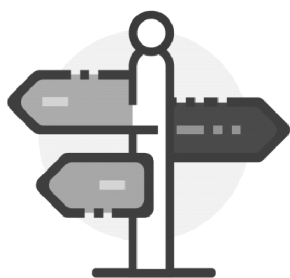
Despite a change of venue, we remain committed to this being a combined villages community project and are always ready to receive more offers of help. We have seen recently that our stock of food and necessary items has been reducing and sometimes that happens as groups become established. May I please stress that our work for those in need in our community remains as important as ever. We have seen an increased reliance on our services in the last

couple of months. Therefore, if you are able, please do support us and come and see us in our new home. Every donation, however large or small, and whether of food or money, is so important to us, and is always used solely and totally to help those who need it in our community.

We have read and seen much recently of how many of our wonderful England football team have worked in their communities over the last year. The stories have been uplifting, but so has the response from our community to our work and I want to say thank you on behalf of all our volunteers.

Steve Allinson

Contact me for any further information on our work via email at: [steve@allinsonlaw.com](mailto:steve@allinsonlaw.com) or (m) 07808164068



# somerset village & community agents

## part of CCS

**Community Council for Somerset (CCS), Viney Court, Viney Street, Taunton, TA1 3FB**

**Tel:** 01823 331 222

**Web:** [www.somersetagents.org](http://www.somersetagents.org)

**Email:** [info@somersetccc.org.uk](mailto:info@somersetccc.org.uk)

**Summer is in full swing! And we are delighted to share with you a new project 'GET OUTSIDE IN SOMERSET'!**

*Jo Robinson – Village Agent*

**B**eing outside brings huge benefits for our physical and mental health, but for a large majority of people, the Covid-19 pandemic has created many barriers to getting outside, and this has amplified feelings of loneliness and isolation. That's why we're working with organisations from across the county to support people in Somerset to get outside and move in more ways that suit them.

There is a new website covering a wide variety of activities, events and challenges, as well as information on a wide range of topics across health and wellbeing, the website will be regularly updated with new activities to inspire the Somerset community. From yoga in the park, fishing, and geocaching, to cycling, climbing, and forest bathing, there is something for everyone. For more information, please visit <https://getoutsideinsomerset.co.uk/> and use the really easy search function to discover something near you! If you would struggle to take part, but want to, let us know and we can help find a solution!

If you are involved in any outdoor activities you would like listing on the website, get in touch with the Get Outside team! We are also looking for passionate people to support the project and inspire the community to get outside to improve their physical and mental health – so share your passion with Somerset and become a Get Outside Ambassador!

**Loneliness:** We all feel lonely from time to time. Feelings of loneliness are personal, so everyone's experience of loneliness will be different. One common description of loneliness is the feeling we get when our need for rewarding social contact and relationships is not met. But loneliness is not always the same as being alone. You may choose to be alone and live happily without much contact with other people, while others may find this a lonely experience. Or you may have lots of social contact, or be in

a relationship or part of a family, and still feel lonely – especially if you don't feel understood or cared for by the people around you – there is more on this here:

<https://www.mind.org.uk/information-support/tips-for-everyday-living/loneliness/about-loneliness/#WhatCausesLoneliness>).

Lockdown has amplified this for many people, as groups and regular social activities stopped running temporarily, but hopefully now they are slowly reopening, and there is always support and help at hand from us Village Agents – we have reopened many of our face-to-face Talking Cafes, as well as our Facebook live sessions – so book an appointment for a chat - [www.somersetagents.org](http://www.somersetagents.org) HYPERLINK "<http://www.somersetagents.org/talking-cafes/>"

We can arrange regular Talk & Support calls for you for free, just to have someone to chat to, arrange befriending services and link you to Good Neighbours schemes where they are set up – our Agents are very skilled in helping people overcome loneliness and reduce isolation. Also, check out the many groups that meet on the Get Outside website – you might discover a new hobby and new friends!

As ever, Village Agents can be contacted by calling 01823 331 222 or visit the website to find your local Agent, or request a call back:

### **Bow House Physiotherapy Practice**

Stacey's Court Car Park  
Bow Street  
Langport TA10 9PQ  
01458 253388

### **Chartered Physiotherapists**

**Also available:-**

**Foot Health and Orthotics, Massage Therapy, Homeopathy, Occupational Therapy, Acupuncture, Bowen, Reflexology, Hopi Ear Candles, Pilates Classes.**

[www.bowhousephysiotherapy.co.uk](http://www.bowhousephysiotherapy.co.uk)  
[info@bowhousephysiotherapy.co.uk](mailto:info@bowhousephysiotherapy.co.uk)



# Encouraging News on the Footpath and Cycleway Study

Tony Greenaway

**T**he fundraising has been boosted recently by two pieces of good news. First, Curry Rivel Parish Council approved a contribution of £2500 towards the feasibility study and, secondly, an unexpected and very generous contribution from an anonymous donor has got the project past the amount required to draw the grant from Somerset County Council Climate Emergency Fund.

At the time of writing, the next key date is 21st July when the working group meets with its chosen specialist company, PJA Ltd. This is when route options will be explored and the timetable (including public consultation) will be finalised.

In the meantime a great shout out to everyone who has contributed to the fund. Without you this study would never have been started.

It is expected that the study will be completed by the end of November 2021. We will keep you up-to-date with our progress as we go along.

## Urgent Cat Food Recalls due to Health Risks for our Feline Family

Linda Dodimead

Last month the Food Standards Agency issued an urgent recall of several brands of dried cat food because vets had reported a significant 'spike' in the number of cats reported to be suffering or dying from a rare syndrome called Pancytopenia. Investigations by the Royal Veterinary College have shown an association between the syndrome and some brands of dried cat foods, hence the recalls. At the time of writing (mid July), they have not yet found a conclusive link for the specific causative agent.

The dried foods which have been recalled were all made in one production plant, owned and operated by Fold Hill Foods in Lincolnshire (Manufacturer's Code on packs is **BG218E5009**). The factory only makes dried pet foods so please don't worry about feeding wet food brands to your cats.

If your cat/cats have been eating one of the recalled foods, **STOP** using that food immediately and substitute with one of the big-name brands. Talk to your vet for advice about the need for precautionary blood tests. Keep an eye on your cat/s for any signs or symptoms, which include: lethargy and weakness, loss of appetite, pale gums, bruising, bleeding (from mouth

or nose, in urine and faeces), anaemia, high temperature, increased heart and breathing rate, collapse.

While the stores are offering refunds for packs returned, it has been suggested by the scientists and by P.C.A that uneaten foods from the lists should be sealed in an airtight container and stored in a safe locked place as they may be needed for testing and/or proof of purchase in the event of compensation being offered. Obviously, also keep any receipts and other proof of purchase.

*[Because of shortage of space, this is an abridged version of Linda's article. For the most recent information go to: [https://www.rvc.ac.uk/news-and-events/rvc-news/rvc-study-to-](https://www.rvc.ac.uk/news-and-events/rvc-news/rvc-study-to-investigate-mysterious-recent-spike-in-severe-feline-pancytopenia-cases)*

*[investigate-mysterious-recent-spike-in-severe-feline-pancytopenia-cases](https://www.rvc.ac.uk/news-and-events/rvc-study-to-investigate-mysterious-recent-spike-in-severe-feline-pancytopenia-cases), or email her: [missingpurrsons@outlook.com](mailto:missingpurrsons@outlook.com) ]*

### Wood Drove Kennels & Cattery

A family run 'home from home' in Langport for your dogs and cats, with plenty of space and cuddles!



Viewings by prior appointment

Tue, Fri & Sat at  
2pm  
01458 250556

[www.wooddrovekennelsandcattery.co.uk](http://www.wooddrovekennelsandcattery.co.uk)

## "BOOTHIE"

General "Handy Man" Services

- **Window Cleaning** with Reach & Wash System
- **Guttering Cleaned & Cleared**—Give your gutters that spring clean Out of reach guttering no problem using gutter vacuum from ground
- **Grass Cutting; Shed Refelting**
- **UPVC Cleaned & Revitalised**—we can restore your Fascias, soffits, door & window frames to look like new

If the job you need isn't listed, just ask  
Call Mike Booth on 01458 251498 or 07872 345623  
email: [mikeboothie@btinternet.com](mailto:mikeboothie@btinternet.com)



....continued from front page....



Gina Beauchamp cribsomerset@gmail.com  
01458 762296

## CRiB Plant sale

We finally managed to hold our first plant sale for 2 years and it was a great success. Thank you to everyone who donated and bought plants. We took £159 which will help towards our future plans and planting. I received several messages of thanks; one lady saying that she knew the plants they had bought would grow in local soil and they were pleased to have information about them too. We will hold our usual sales in April, May and June next year.

## Theft from Gardens

Sadly plants and ornaments have been stolen from front gardens in the village recently. This is such a shame and disappointment when people are trying to make their gardens beautiful for everyone to enjoy. We may need to install security cameras in our porches, or the Ring doorbell system which is very good and records who is at your door. It is a shame that we have to resort to such measures but it may deter those who wish to steal. Villagers take pride in their gardens and it spoils the enjoyment for everyone in the village when things are stolen.


## Jobs to do in the Garden in August

- Keep watering and feeding everything. Put out extra buckets and bowls when it rains to save rainwater. Use a water butt to save using tap water. Put saucers under pots to save water escaping.
- Take the bottom leaves off tomatoes to let air circulate.
- Start to collect seed from any plants you wish to spread.
- Deadhead regularly to keep flowers blooming.
- Take cuttings from lavender and rosemary
- Organise someone to water your garden and pots if you are away during the hot weather
- Relax and enjoy your garden!

# Peppard S

Funeral Directors



Chapel of Rest  
Townsend  
Curry Rivel



Bow House  
Bow Street  
Langport

## 01458 252505

Memorial Masonry Service

Foundation Stage



Little Pips

Our Website  
[curryrivelpriamary.somerset.org.uk](http://curryrivelpriamary.somerset.org.uk)

---

**We are open 5 days a week**

7.30 a.m. - 6.00 p.m.

From 3 months to 4 year olds

---

50 weeks a year

Located within

**Curry Rivel Primary School**

For more details telephone

**01458 252822**

## Andrew Jones Your local & fully insured Tree Surgeon

### Tree Work

Stump Grinding  
Dead Wooding: Thinning  
Crown Reduction Raising  
Dangerous Trees Removed  
Tractor, HIAB & Flail Work

### We Supply

Barn Stored Logs  
Woodchip for Mulch  
Bullrush Compost  
Quality Top Soil  
Sand & Aggregate  
in Dump Bags or  
Loose per Tonne

### Fencing & Hedges

All Types Supplied, Planted  
& Erected

### For Hire

Digger-Takeuchi TBO 16  
Chipper



### Landscaping

Ponds, Patios & Paths  
Cultivating, Rotovating & Turfing  
Garden & Site Clearance  
Stonework, Block & Bricklaying

### Call for a Free Quotation

Tel: **01458 252 263** or  
Mobile: **07971 532 082**

# Letters to Editor

Hello, could you put the following warning in the Curry Rivel News, please?

We moved recently from Gloucestershire to Curry Rivel to retire. We believed it to be a crime-free area, but after the Euros football final – possibly because of too much alcohol, someone stole our two new wonderful green glazed planters from outside our front door on Church Street. They were full of beautiful flowers. We are so upset, but we did not call the police as we did not think that they would be interested. It does not seem to be the crime-free area we had hoped for. Perhaps it is a wake-up call.

*Name and address supplied*



## SEAN MOUNTER

**Plumbing & Heating Engineer**

**For full Gas & Oil Central Heating**

**Gas  
contracted  
installers**



**CTIB  
Trained**

**Fully apprentice served  
with City & Guilds  
qualifications**

**All types of plumbing &  
heating installed, Boiler  
changes, Heating  
upgrades**

**Complete bathroom,  
shower rooms  
installation incl. tiling,  
building work etc.**

**No job too small. No VAT. Free competitive quotes  
and advice**

**Tel: 01458  
253015**

**Herald House,**

## Naturally Beautiful Beauty Salon

is based in Curry Rivel offering a wide variety of treatments including eyelash extensions, lash lifts, CACI, radio frequency collagen lift, massage, facials and waxing.

Reiki and Reflexology are also available with Debbie.

**Call 07903 727 590 or  
find us on Facebook**



**@naturally beautifulbeautysalon**

## Tincknell Fuels

**Your Local Fuel &  
Heating Specialists**

### Tincknell Fuels

- ☒ Reliable Fuel Deliveries
- ☒ Automatic Top Up Service



### Tincknell Heating

- ☒ Gas/Oil Boiler Maintenance
- ☒ Boiler Installation
- ☒ Oil Tank Installation

**01749 683911**

**www.tincknells.com**

**01458 259679 / 07779 322130**

## S R BUILDING

**Brickwork  
Plastering—Roofing  
Patios—Tiling  
Decorating  
All General Building Work &  
Property Maintenance**

**stephen.reddings@live.co.uk**

## Hamar Fencing & Garden Services



- \* Specialist in fencing & gates
- \* Patios & decking
- \* Hedge trimming & tree work
- \* Landscaping
- \* Turfing & artificial lawn

**07792567318**

**hamarfencing@yahoo.co.uk  
hamarfencing.com**



## KEVIN PRICE (PREFENCE LTD)

All types of fencing supplied and installed.

Panel, Closeboard, Post & Rail, Stock fencing & Gates.

Free no obligation quotation or advice

**Contact Kevin Price on 01458  
251123 or 07968 565939**



**AGRICULTURAL  
&  
EQUESTRIAN**



# Children's Page



# Just For KIDS

## Jungle jokes

**What do you call a gorilla with bananas in its ears?**

*Anything you like, he won't hear you!*

**What is white and swings around the jungle kitchen?**

*A meranguetan!*

**Why don't monkeys like playing card games?**

*Because there are too many Cheetahs!*

**What do you call a penguin in the jungle?**

*Lost!*

**How do you take a tiger's temperature?**

*Very carefully!*

**What do you call a funny snake?**

*Hisssterical!*

**Why are panthers so much stealthier than their jaguar and leopard cousins?**

*Because they are never spotted!*

**Where in Curry Rivel is it best to see jungle animals?**

*At home on the television!*

## Word Search

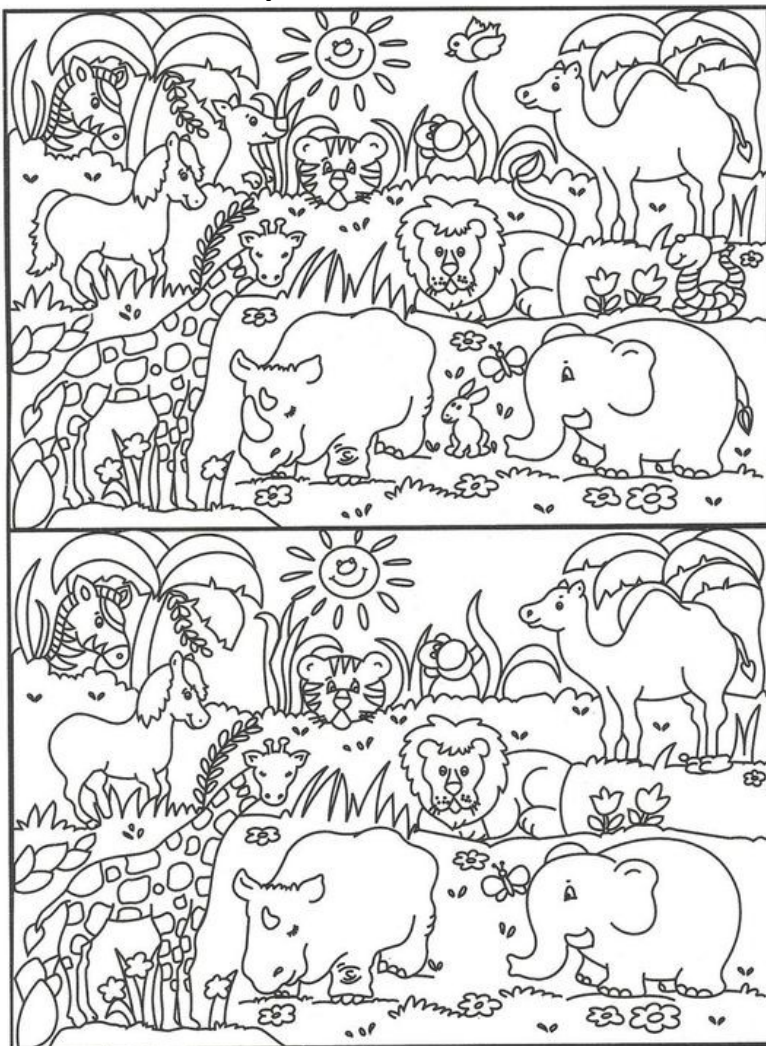
A	W	A	Q	S	T	Y	S	O	N	C	R
L	J	U	N	G	L	E	I	Q	O	R	E
L	J	F	U	D	P	A	Q	C	I	O	P
I	Q	H	T	I	S	M	M	H	L	A	S
R	S	O	R	E	C	O	N	I	H	R	I
O	K	T	A	R	B	E	Z	M	N	S	H
G	S	R	U	M	B	L	E	P	M	A	W
H	I	P	P	O	P	O	T	A	M	U	S
G	I	R	A	F	F	E	S	N	A	K	E
T	N	A	H	P	E	L	E	Z	L	V	C
C	R	O	C	O	D	I	L	E	I	I	G
E	L	L	E	Z	A	G	R	E	G	I	T

ANIMALS  
CROCODILE  
GAZELLE  
GORILLA  
JUNGLE  
RHINOCEROS  
RUMBLE  
STRIPES  
WHISPER

CHIMPANZEE  
ELEPHANT  
GIRAFFE  
HIPPOPOTAMUS  
LION  
ROARS  
SNAKE  
TIGER  
ZEBRA



## Spot the Difference



## \*WARNING\*

All the below events are subject to cancellation at short notice due to the Corona virus epidemic please contact each group for details.....Keep well, Keep safe

### In August Regular Events



....all postponed until further notice except shown....

#### MONDAY

9.45 Art Club  
3.30 - 5.30 Messy Church (2nd only)  
6.00 Pilates  
6.45 Explorer Scouts

#### TUESDAY

10-12 Craft & Coffee (2nd only)  
2.30 Forget-Me-Not-Café  
5.45 - 8 Pilates  
6.00 Cub Pack  
6.30 Guides  
6.30 Langport Youth Club  
7.00 - 9.00 Short Mat Bowls  
7.30 Sedgemoor Garden Club (2nd only)  
7.30 Tuesday Group (3rd only)

#### WEDNESDAY

9.30 Mother and Baby Group  
6.30 Cycling Club, Bridge Cafe  
6.30 Line Dancing Classes  
6.45 Scouts  
7.30 Bell Ringing

#### THURSDAY

10.00 WI  
2.00 - 4.00 Short Mat Bowls  
4.30 Rainbows  
4.30 Brownies  
7.30 Parish Council (1st only) via ZOOM

#### FRIDAY

9.30-2 Get Together Club  
7.30 Cinema Night

#### SATURDAY

9.00 Cycling Club, Bridge Cafe

### Some Useful Telephone Numbers

#### Youth Organisations

Beavers, Cubs, Scouts 01460 281184  
Rainbows 01823 698940  
Brownies 251953  
Guides 252901  
Langport Youth Club 0793 899 338

#### Sports Clubs

Short Mat Bowls Club 251201  
Cricket Club 01823 698849 & 01458 252791

#### Social

Flower Show 250311  
Out & About 252146  
Royal British Legion 01460 281115  
Twinning Association 01460 281905  
Women's Institute 259688  
Rotary Club of Langport & Somerton 252813  
PROBUS 252545  
Sedgemoor Garden Club 250091  
Heale Lane Allotment Association 741880  
Curry Rivel in Bloom 762296  
Get Together Club 251524  
Health Walks 250725  
Mother and Baby 07732 197030  
Forget-Me-Not-Café 252710 & 741606  
Inner Wheel 251940  
Tuesday Group 252657/252022

#### Arts

Entertainers 250311  
Music Club 250863  
Dancing Classes 07730 755203  
Art Club 253126

#### Community Facilities

Food Bank (help@curryrivel.org.uk) 0771 6792760  
Village Hall (crvhbookings@gmail.com) 741606  
Old School Room Bookings (crosrbookings@gmail.com) 250655/253856  
United Reformed Church Hall - Bookings etc. 259391

#### Community Services

Doctors 250464  
Police 101  
Yarlington Housing 01935 404500  
Footpath & Litter Warden johncasebourne@sky.com

#### Education

Little Pips 252822  
Primary School 251404  
Huish Episcopi Academy 250501  
Huish Episcopi Leisure Centre 251055

#### Local Authorities

Parish Council (Clerk) curryrivelparish@outlook.com 07714 510828  
District Council 0 1935 462462  
County Council 0300 123 2224

#### Religious

Church of England Rector 251375  
Churchwarden 259003  
Secretary PCC 251355  
Organist & Bell Ringing 253856  
Flower Guild 252710  
Roman Catholic Church, Somerton 274008  
URC Minister 252799

### Deadlines for September Edition

**Advertising:** 5pm Thursday 12th August  
**Send to:** crn.nigel@outlook.com

**Comments & Articles:** 5pm Tuesday 17th August  
**Send to:** curryrivelnews@gmail.com

The Curry Rivel News is published monthly by the Curry Rivel News Group and is delivered free to households within the Parish.

<b>Editor</b>	<b>Jane Hamlin</b>	252946
	<b>curryrivelnews@gmail.com</b>	
<b>Advertising</b>	<b>Nigel Grinsted</b>	07734226000
	crn.nigel@outlook.com	
<b>Treasurer</b>	<b>Rob Atkins</b>	253008
	crntreasurer@yeatesatkins.co.uk	
<b>Publishers</b>	<b>Mike Davis / Richard Wilkins</b>	252554
	crnpub@gmail.com	
<b>Distribution Manager</b>	<b>Hazel Morris</b>	
	hazelmorris200@gmail.com	
<b>Secretary</b>	<b>Natalie Gunter</b>	
	crngsecretary@gmail.com	
<b>Staff Photographer</b>	<b>Mike Mason</b>	252076
<b>Church Pages</b>	<b>John de Ronde</b>	251355
	johnderonde51@hotmail.com	

### Pick up your Prescription from the Post Office

Do you pick up repeat prescriptions from Langport surgery? If so you can request your medicine to be delivered to Curry Rivel Post Office in the BP petrol station. When you reorder, simply ask for delivery to Curry Rivel PO (including reorders on the surgery website). The surgery delivers to the Post Office every Tuesday and Friday. And while you're in the Post Office you can pick up a cappuccino too!

## St. Andrew's Church

Find us at: [www.curryrivel.org.uk/local-info/churches/st-andrews-church.html](http://www.curryrivel.org.uk/local-info/churches/st-andrews-church.html)  
and [www.achurchnearyou.com/church/11260](http://www.achurchnearyou.com/church/11260)



*We warmly welcome visitors and new members of the community to any of our services and other events.*

### Covid effects

At the time of writing it is anticipated that Covid restrictions will soon be lifted or much reduced and that this can be reflected in the arrangements for opening the church and how we gather to worship. Although we await formal guidance from the Church of England and the national 'Places of Worship Taskforce', we anticipate that St. Andrew's Church will be open to everyone on a daily basis, as it was before the pandemic.

'Live' services – with a likely more relaxed, yet still cautious, approach to face masks, sanigel or social distancing – are planned as listed below. As before, if local conditions dictate, short notice changes to services may be necessary. It is therefore recommended that you check the notice board in the churchyard by the Green, in the church porch, on the village website, or on our 'A Church Near You' web page.

## August

### Sunday 1st

10.00 **FH** - All Age Family Service  
10.45 **FH** - Said Communion CW  
6.00 pm **CR** - Evening Worship CW

### Sunday 8th

10.00 **SW** - United Benefice (UB)  
Holy Communion CW

### Sunday 15th

10.00 **FH** - UB Holy Communion CW

## Scott's spot

### Sabbatical

If it wasn't for the 'to do' list on my desk, I would be almost 'Demob happy'.

As I write I am shortly to begin a sabbatical for the months of August, September and October, something that's been in the planning for well over three years. Like so much of recent life, Covid meant that the original plans for last year were cancelled, but with the situation now gradually easing it felt appropriate to have another try.

Why take a Sabbatical? Well because at one time Clergy used to work at a pace that allowed time for reflection and study as part of their normal ministry. Increased demands and heavier workloads have made this difficult to do. To take a block of leave therefore allows a minister time to read, reflect, plan and rest in a way that brings re-creation and enrichment to their ministry.

What is a sabbatical? Well it's not a holiday, although it should include a period of holiday or relaxation, nor is a sabbatical 'study leave' in the strict sense because it should have a dimension of recreation, rather than simply swapping one frenetic lifestyle for another. Nor does it necessarily have to be related to your current work: it offers the chance to more fully explore interests for which time is usually unavailable, and it does not have to be justified by being a proven benefit to what you are doing now or in the future. But the re-creation and enrichment of the time should ultimately benefit the people I work with, and for, when I return to parish life.



### Scott's spot ctd. . . .

What are my plans? Unfortunately the family trip to Zimbabwe to contribute to care and conservation at an elephant and rhino sanctuary has not been possible (red lists and all that), and we've postponed until next year. Plenty else however is planned. Alongside a (less adventurous) family holiday to the Lake District, I shall be trying to develop a potentially commercial Christmas project that involves both woodwork and theology (ask me about it sometime!); I hope to spend time on retreat in prayer, reading and reflection; released from weekend responsibilities I hope to do some UK travelling to re-establish friendships from my musician, RAF, Theological College and Curacy days; and as a Dad and husband whose time (and head-space) is often limited by the pressures of the role and the cares and concerns of others, I'm looking forward to simply being around and available more than usual, and to enable Rowan time and space for similar refreshment herself. Beyond all this I'm hoping some tennis lessons and extra practice will help improve my backhand and the consistency of my serve! Anyone up for a game?

Time out for the above is a tremendous gift and I am grateful to the Bath and Wells Diocese for the opportunity. I am also enormously grateful to Revd. Stafford Low who will be the 'go to man' in my absence, and also to the faithful and brave individuals who have offered themselves in leadership to maintain a full pattern of Sunday and mid-week worship across our Benefice until I return in November.

With prayer for an enjoyable, safe and healthy summer,

Revd. Scott

### August ctd

### Sunday 22nd

10.00 **CR** - UB Holy Communion CW

### Sunday 29th

10.00 **FH** - UB Holy Communion CW

**CR** = St. Andrew's Church, Curry Rivel

**FH** = St. Martin's Church, Fivehead

**SW** = St. Catherine's Church, Swell

### St. Andrew's Rotas August

**Brass** - Jackie de Ronde

### Flowers

7th & 14th - Angela Cole  
21st & 28th - Adrienne Holmes

### Cleaning

6th - Anne Geach  
13th - Jackie & John de Ronde  
20th - Anne Goff  
27th - Carolyn Paton





### St. Andrew's Fete

Following the announcement in last month's CR News regarding the cancellation of the fete, we had mentioned a possible 'alternative' event on the afternoon for which the fete had been planned. In fact, the draw of the raffle did take place on the Green at 4.15 pm on 17th July. Prize winners who were not present at that occasion have been notified and will have received their prizes by now.

In addition to this, a number of people will be privately hosting 'fete-friends' cream teas (or alternatives) and inviting donations from their guests. If you would like to host such an event, please contact Carolyn on 01458 259467.

We wish to sincerely thank all those individuals and businesses who so generously contributed towards the amazing array of raffle prizes.

We hope to be able to stage a 'proper' fete, including dog show, in 2022!

### Just for fun!

#### Notices found in church newsletters - that didn't quite come out right!

The organist invites anyone who enjoys sinning to volunteer for the choir.

The preacher for Sunday next will be found hanging on the notice board in the porch.

Ladies, when you have emptied the teapot, please stand upside down in the sink.

#### Nice

The nice thing about becoming forgetful is that you can hide your own Easter eggs.

*From the Parish Pump*

### From the Registers

#### Funerals

*May God grant them eternal rest.*

14th July - Funeral Service at Yeovil Crematorium of Trevor Livingstone Wilce RN FAA Ret († 2nd July) Formerly of Abbey Close.

## United Reformed Church



### August

**Services start at 10.30 am.**

**They are taking place in our Chapel building and simultaneously live via Zoom.**

Anyone unable to attend in person who would like to feel part of a worshipping community is invited to join us -from any denomination or none; simply email Steve Beney on [stevebeney@yahoo.co.uk](mailto:stevebeney@yahoo.co.uk) expressing your interest and he will contact you explaining how to join us on Sundays @ 10.30 am.

**Sunday 1st** - Mrs Alison Reed Richards

**Sunday 8th** - Rev Rowena Francis

**Sunday 15th** - Rev Tim Richards

*(incl. Holy Communion)x*

**Sunday 22nd** - Mrs Glenys Allinson

**Sunday 29th** - via zoom

Rev Rowena Francis

We are an inclusive, outward looking group of people and we welcome all: wherever you are on your life/spiritual journey we welcome you without regard to age, gender, denominational background, sexual orientation, race or ability. We respect the traditions of our past, engage with present and look forward to the future, believing that Christian truth is not contained in static prepositional statements but is ever changing and constantly evolving. Tea/coffee is served after every service providing the opportunity to meet and chat with each other and the preacher.

**Minister: Rev. Tim Richards**

**01458 252799**

Somebody asked me if I would have any 'lockdown regrets', by which I took to mean were there things I had wanted to achieve and failed to do?

I reflected on this for a while and came to the conclusion that there was no point in regret as we can only really plan for a course of action, i.e. learn a language, study thermonuclear physics or write that bestselling novel, if we know we will have the time to do so. As we begin to come out of this strange experience which has included 3 lockdowns and numerous restrictions we might think 'I wish I had....', but when it began, we had no idea how long this would last.

There is a prediction that those responsible for our mental health will find themselves much busier in the coming months as the effects of social isolation, financial insecurity, toing & froing between what we can and cannot do, health anxiety, loss & farewells unspoken, take their toll.

Speaking personally, I found the first few weeks difficult, eventually however a routine was established that enabled me to work, rest and play, which was nothing to do with the amount of extra chocolate I have eaten! I do not wish to trivialize the seriousness of Covid 19 (both my Aunt and Uncle died of Covid during this time); I do however hope that you have fared well and this strange time has in its own way contained blessings for you -perhaps time for quiet reflection, time to read more, time to sit with God and to understand, much as we all wish to return to our buildings, church is not defined by bricks and mortar.

It is for me true, and something I have rediscovered, when crisis comes, it is not only possible but helpful to cry that God is our strength and comfort.

My best wishes to you all,

Rev. Tim

# Lammas Growth

*Peter Goodenough - Curry Woods Conservation Trust*



*Oak showing Lammas growth*

it had been a dry summer. As roots push their way through the soil using hydrostatic pressure, dry weather baulks their progress in two ways, firstly hard dry soil is much more resistant to small roots and secondly the roots cannot take on board enough water to grow and expand. All root growth depends on the simple physics principle that liquids cannot be compressed - so hydrostatic pressure is very powerful in pushing through solids and gases, both of which compress. That is why roots are like JCB earth moving machines (other makes are available) as both rely on hydrostatic pressure to move solid material like soil. Roots grow by their cells dividing and the new cells filling with water and pushing aside the soil. This is so much easier when the soil is wet and roots grow fast as they experience little resistance. This opens up many tiny channels in the soil and in the winter much more rain is absorbed by the

soil than without trees - which is why our trees will play an important part in the future in retaining flood water that would otherwise run off towards the village!

Some trees will busily grow all summer and in most seasons keep on producing fresh leaves and shoots. Others such as oak and horse chestnut tend to produce a first flush of leaves and then, around June, stop growing. Their fresh shoots produce sugars that are stored for the winter, but if the weather is dryish no further new growth is made. However, if the weather is wet the trees suddenly start into new growth again, giving a spring like fresh green hue to the oak woods. This traditionally occurred around late July and early August and was known as Lammas Growth because it was close to Lammas Day. This day - 1st August - was a traditional day of celebration dating back many centuries when blessings were sought for the harvest. The word Lammas was derived from the Anglo Saxon Hlafmaesse which roughly translated means loaf mass. The very first ripe cereal grains were collected and bread baked from them, then crumbs from the loaf were sprinkled in the corner of barns to bring luck for the coming season. In our rather dry area Lammas Growth is rare but this year the oaks could not wait for Lammas Day, they burst into new growth in early July - so they have only briefly paused in their growth. This is good news for the Curry Woods as the newly planted oaks will not only produce plentiful new shoots and leaves but below ground the roots will be expanding through the damp soil much more easily than if



*Rowan, grows throughout the season*